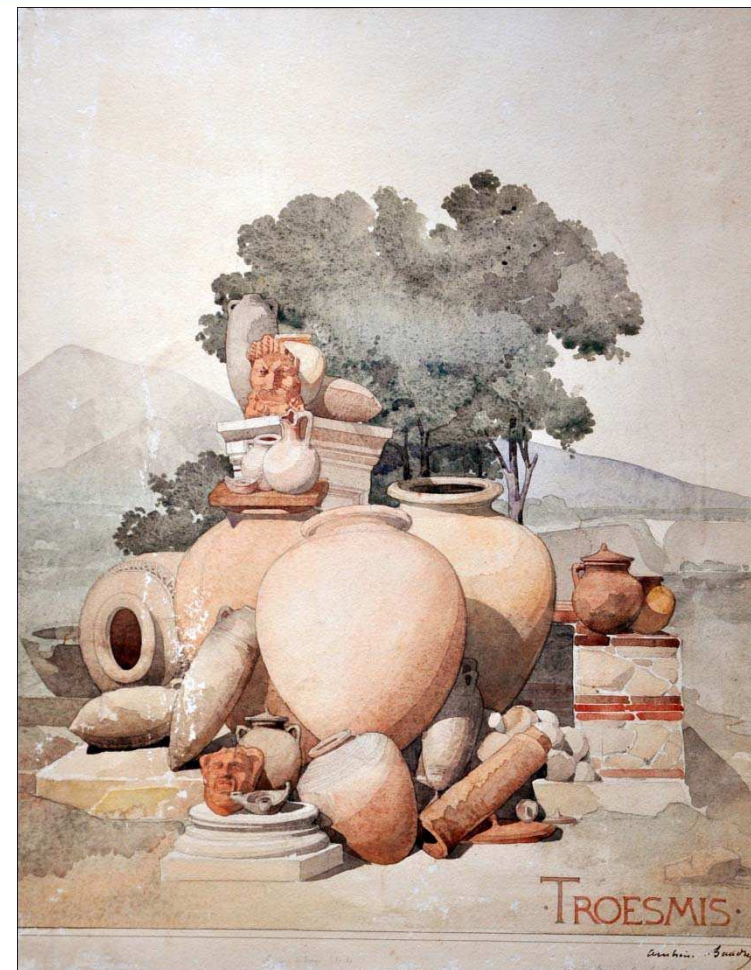
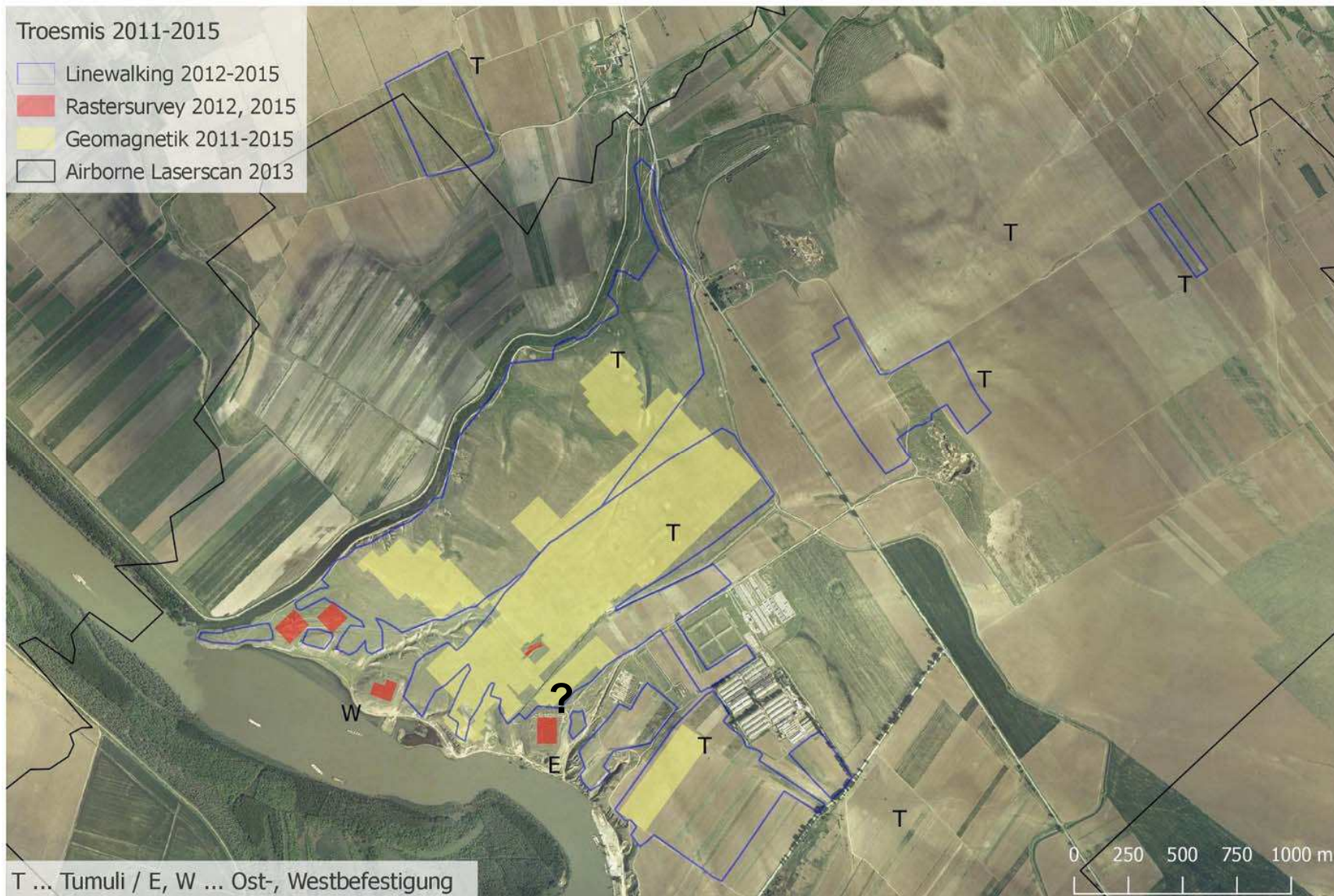


# The Archaeological field survey in Troesmis

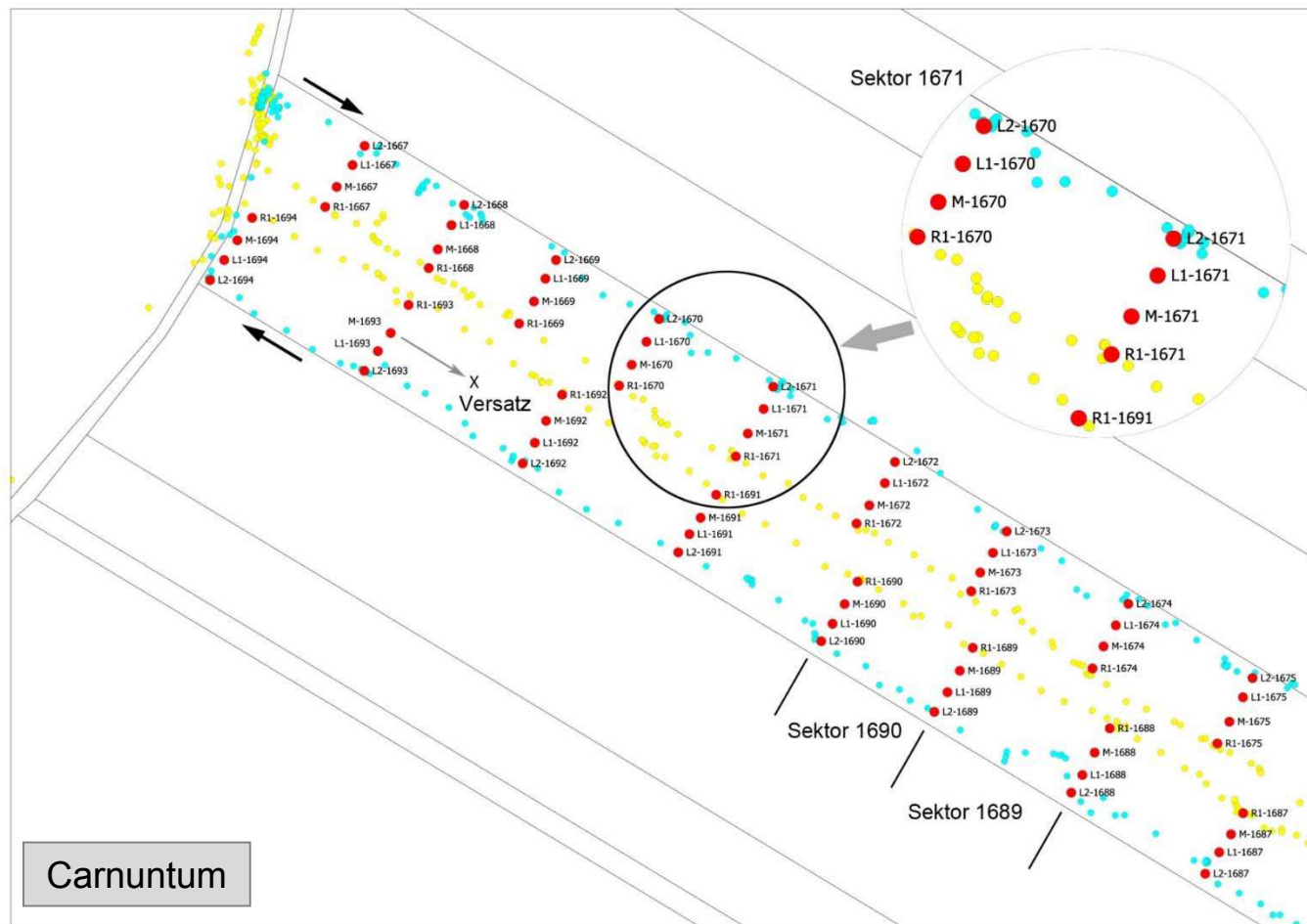
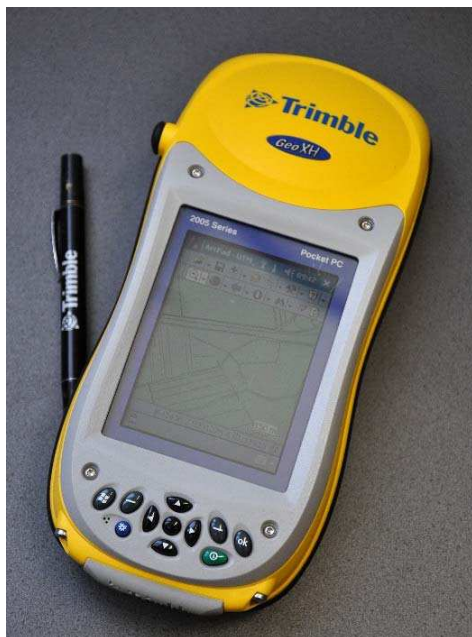
Alice Waldner, ÖAI



# Troesmis 2011–2015



# Archaeological field surveys in Carnuntum and Troesmis



Troesmis



# Archaeological field survey in Troesmis: GPS and WebGIS-technology

The screenshot displays a mobile GIS application interface for an archaeological field survey. The interface is divided into several sections:

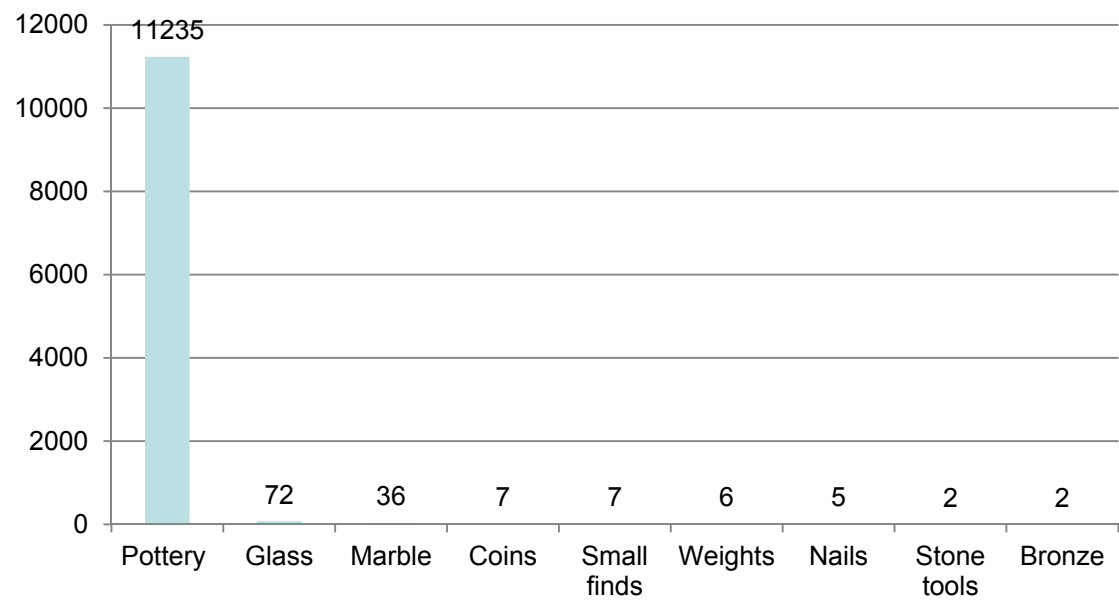
- Top Bar:** Contains navigation icons (Home, Karte, Layer hinzufügen, Feature, Analyse, Werkzeuge) and the user name "Hi Christian Gugli".
- Map Area:** Shows a satellite view of a field with a blue polygon outlining a survey area. Yellow dots represent data points. A blue line indicates a path or boundary.
- Data Entry Form:** A form titled "Form" is overlaid on the map. It includes fields for "Linewalking" and "Title Linewalking", a "Type" dropdown menu, and a table of data points.
- Data Table:** A table with columns "Typ", "Name", and "Label" is visible. It lists various data points with their corresponding names and labels.
- Bottom Bar:** Contains navigation icons (Form, Refresh, Locate, Settings) and a "Speichern" (Save) button.

Typ	Name	Label	Details	Löschen
▼ sektor	Sektor		Details	Löschen
▼ auffindbedl	AuffindBedl		Details	Löschen
▼ l2_bk	L2-BK		Details	Löschen
▼ l2_beob	L2-Beob		Details	Löschen
▼ l1_bk	L1-BK		Details	Löschen
▼ l1_beob	L1-Beob		Details	Löschen
▼ m_bk	M-BK		Details	Löschen
▼ m_beob	M-Beob		Details	Löschen

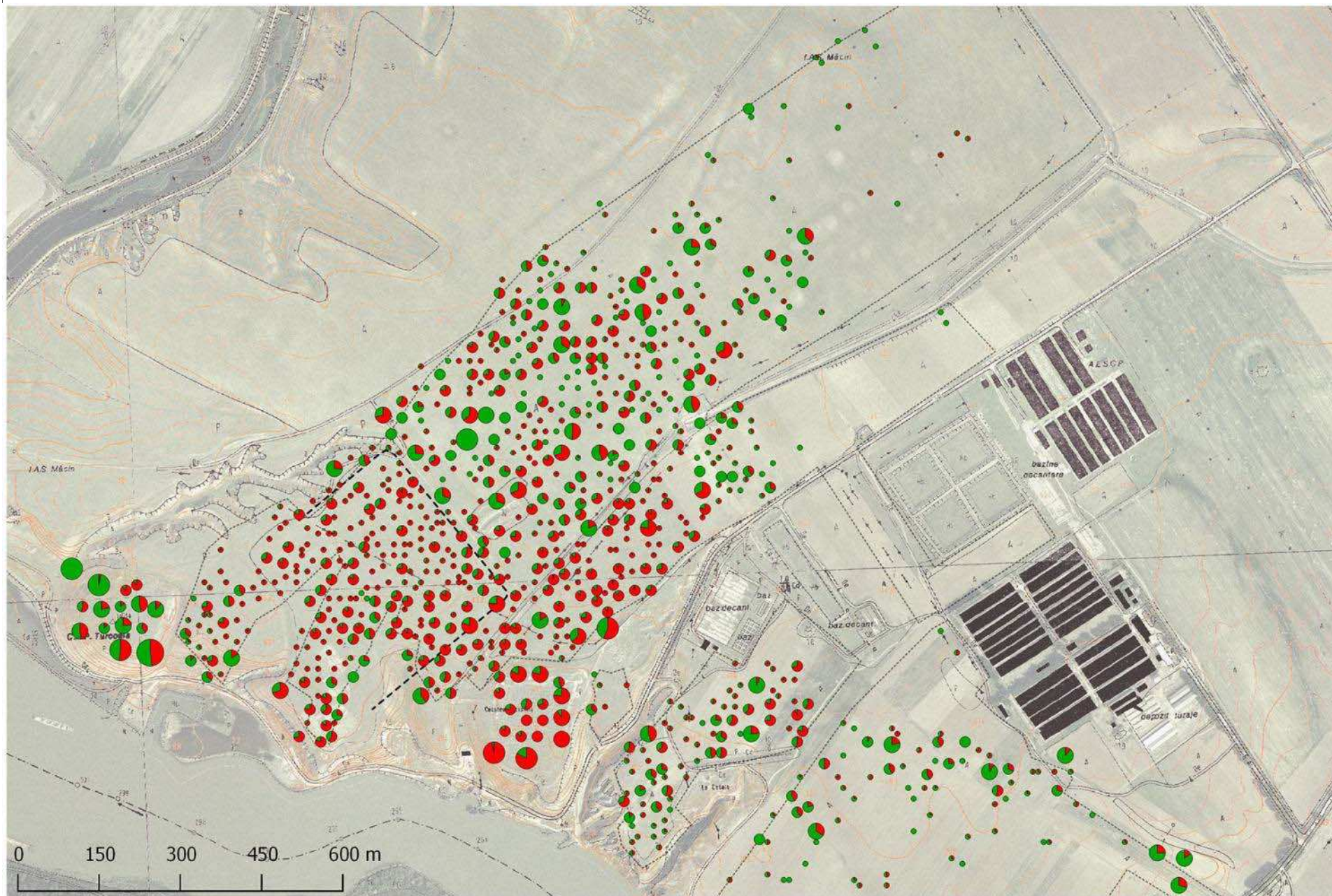
# TROESMIS SURVEY 2012–2013



# TROESMIS SURVEY: Find categories



TROESMIS SURVEY: ceramic building material (red) – pottery (green)

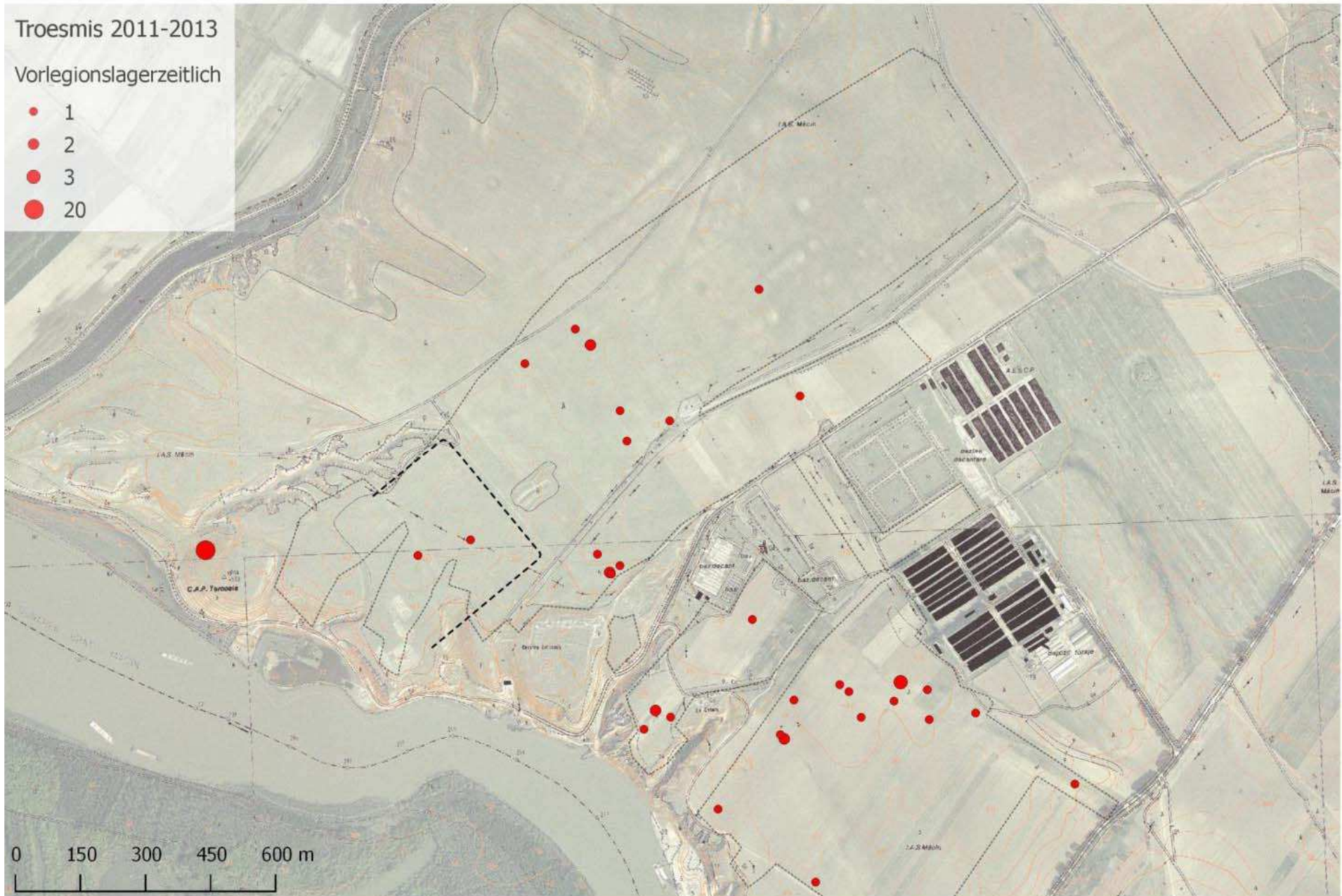


# TROESMIS SURVEY: Pottery of the periods before the founding of the-legionary fortress, distribution

Troesmis 2011-2013

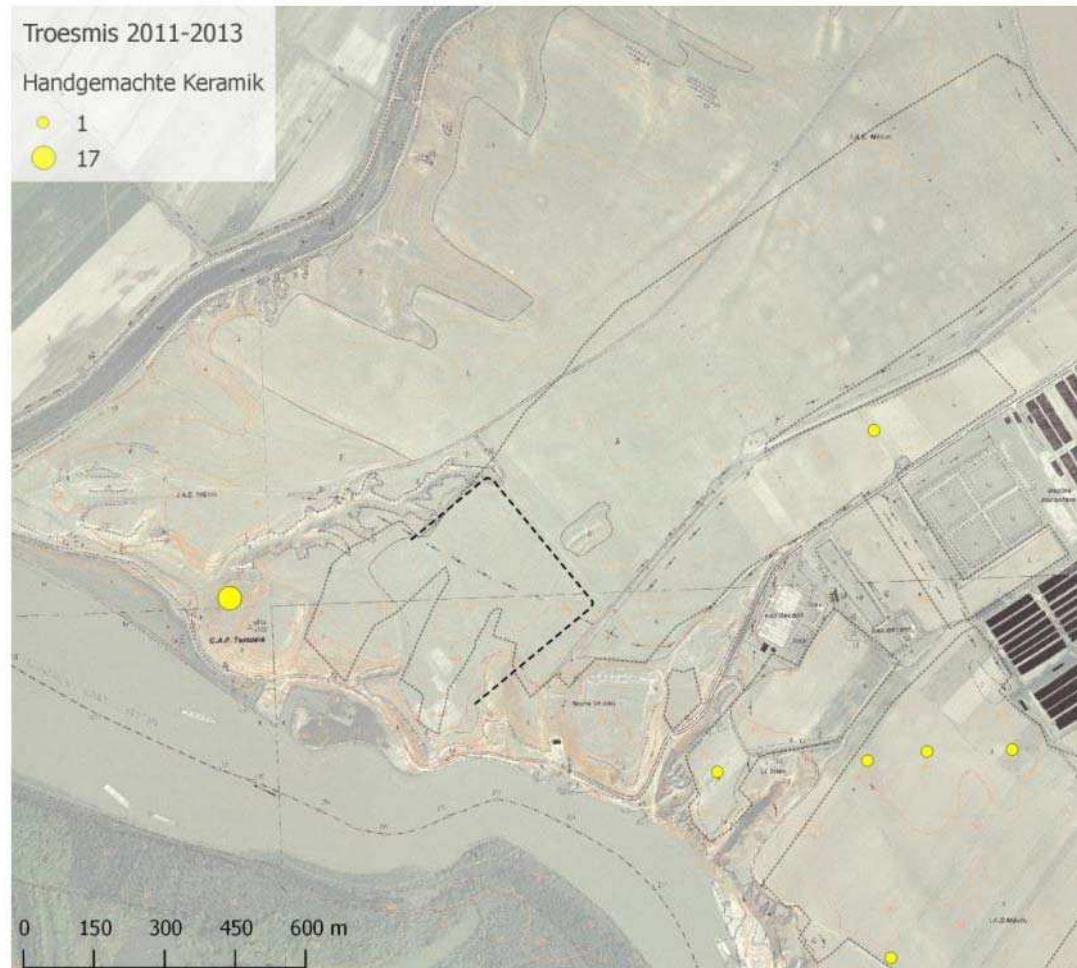
Vorlegionslagerzeitlich

- 1
- 2
- 3
- 20

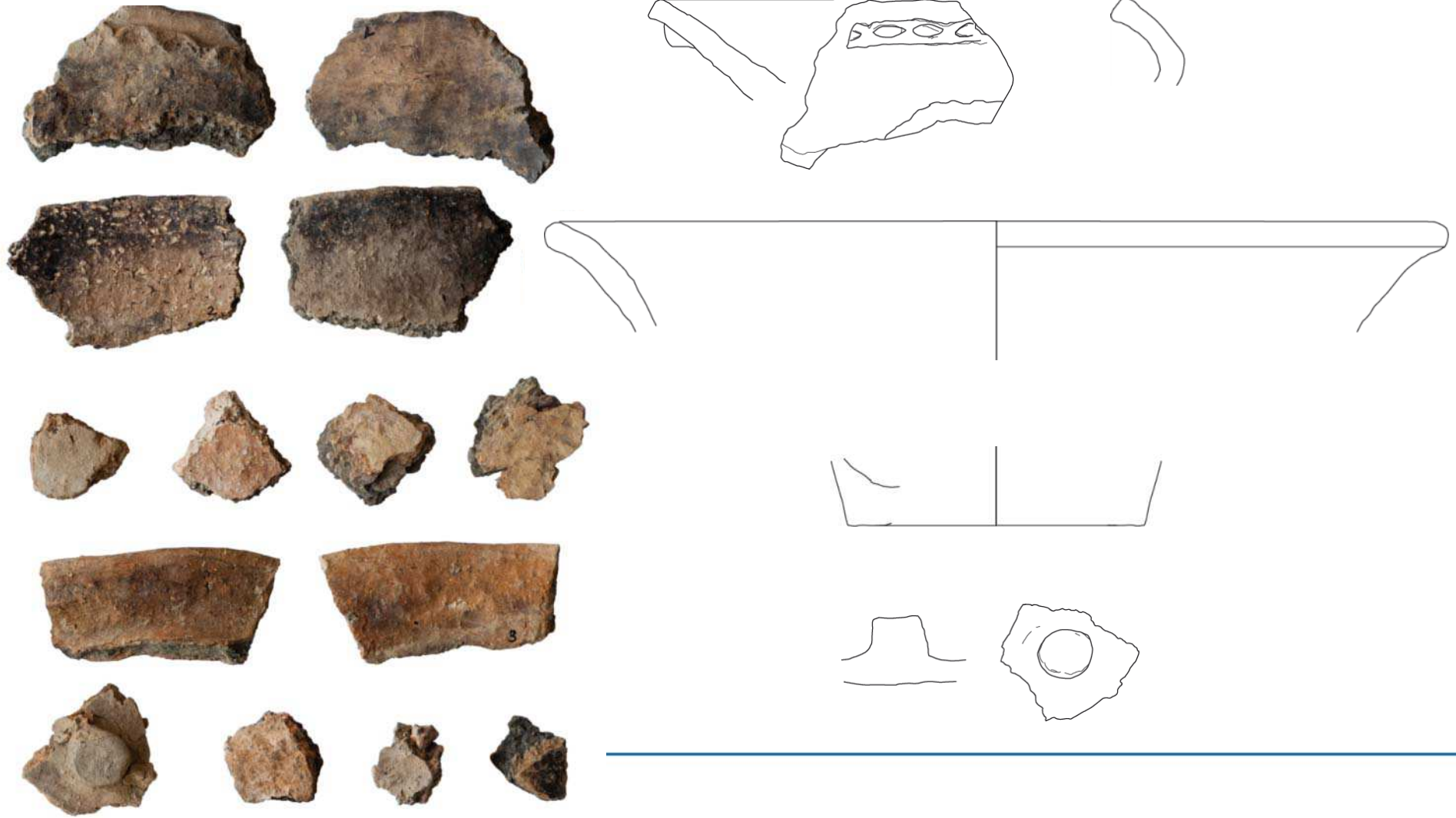




Troesmis: Western fortress, stone masonry M9 and distribution of handmade pottery collected in the survey



# TROESMIS SURVEY: Handmade pottery



TROESMIS SURVEY: Pottery of the periods before the founding of the legionary fortress



Wheel thrown grey ware



Ephesian import amphora ,Local Aegean I'



Hellenistic fine ware bowl



Eastern Sigillata A (ESA)



Eastern Sigillata (ESC)



Amphora of Greco-Italic type



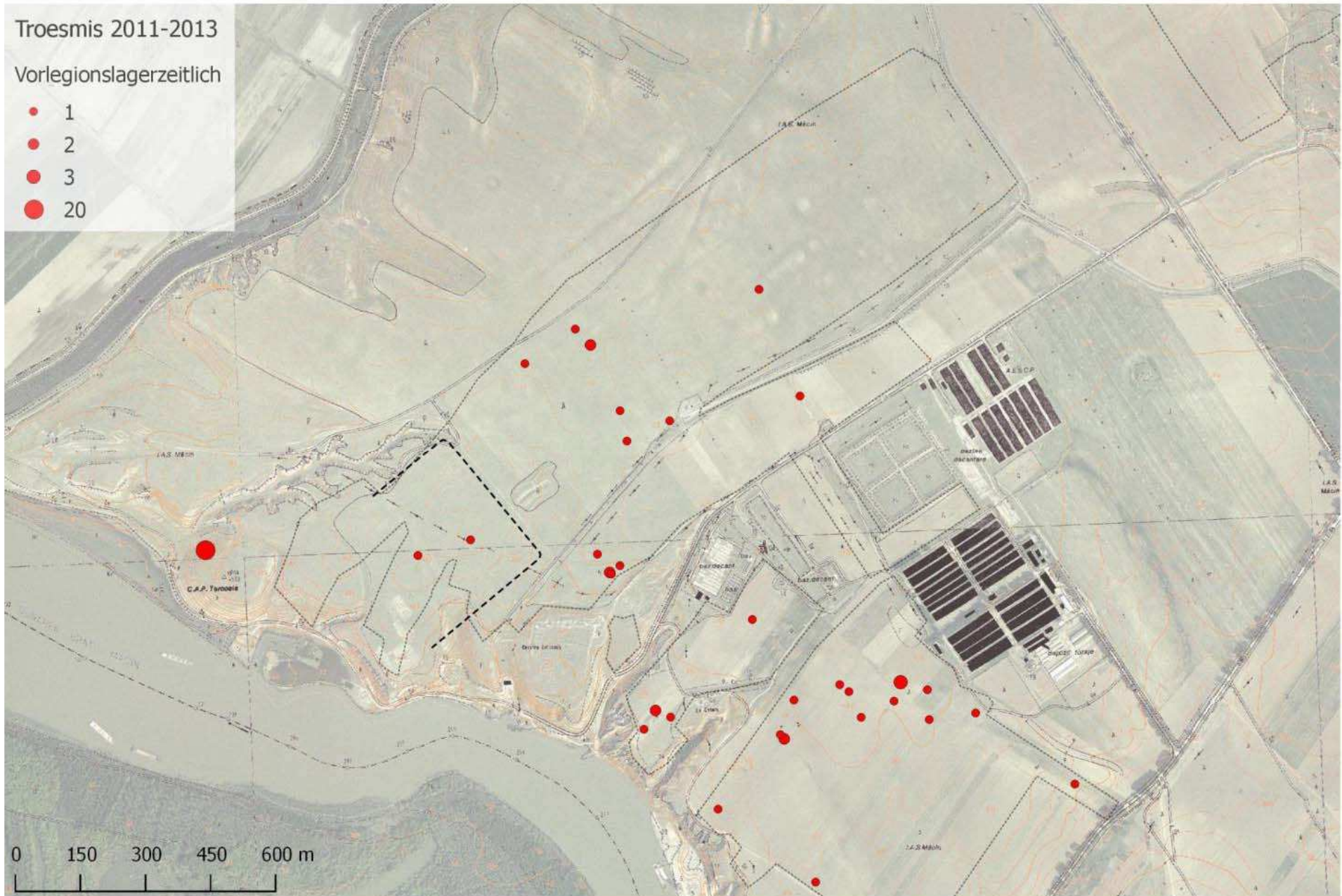
Italic Sigillata

# TROESMIS SURVEY: Pottery of the periods before the founding of the-legionary fortress, distribution

Troesmis 2011-2013

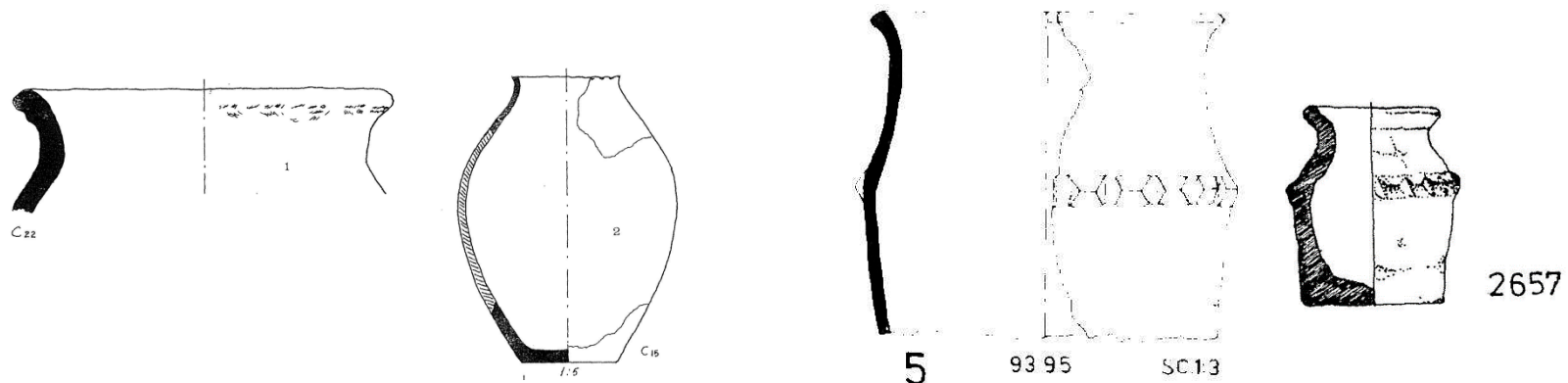
Vorlegionslagerzeitlich

- 1
- 2
- 3
- 20



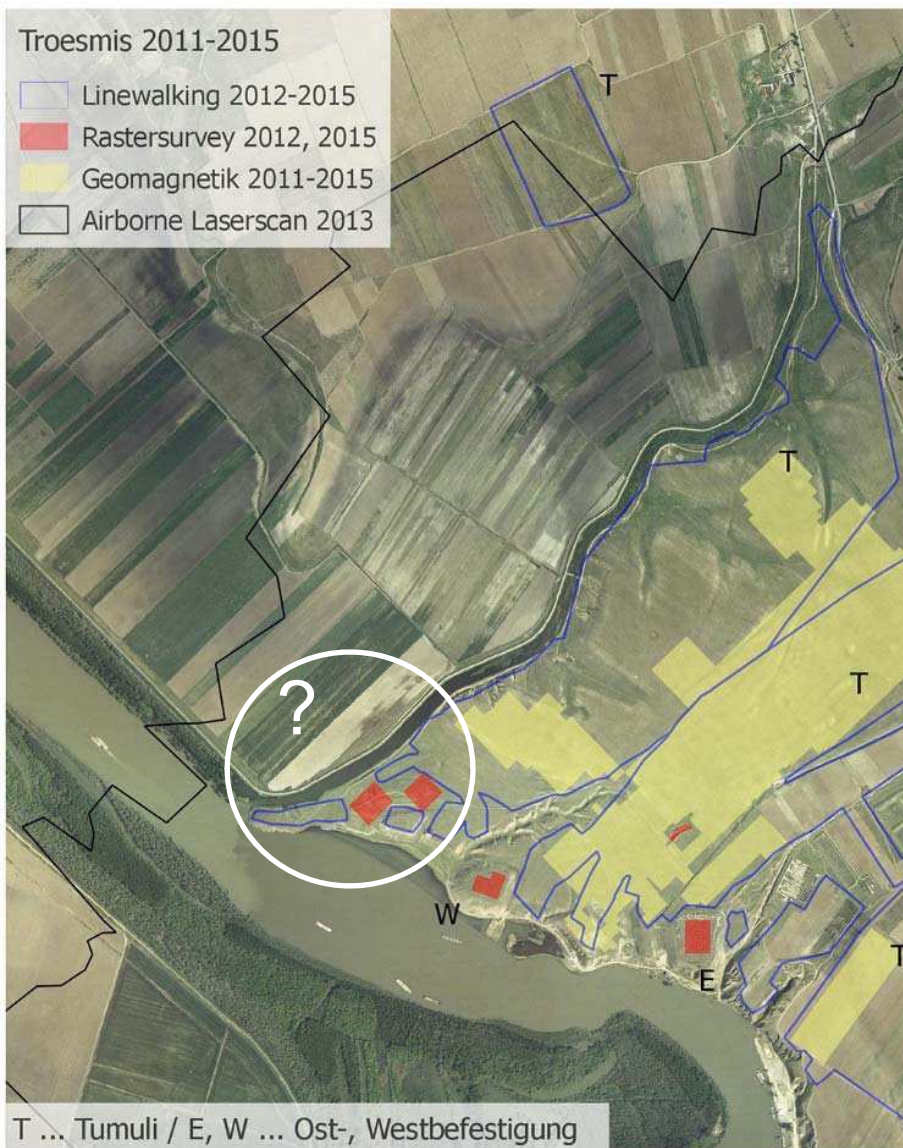
«Cele mai timpurii monede cunoscute astăzi la Troesmis datează din secolele III-II.e.n. Este vorba de un **"obol" de bronz emis în timpul domniei lui Ptolemaios al III-lea Evergetes (247-220)**, piesă aflată în colecția Muzeului de Istorie din Galați și o **monedă callatiană de asemenea de bronz, tip Pick 229**... Cele două monede confirmă vechimea și legăturile strinse ale acestei dave getice de pe malul Dunării cu centrele grecești mai apropiate sau mai îndepărtate. ...»

Oberländer-Tărnoveanu 1980, 251.



Opaiț 1980, 329, 5–6; compare to Baumann 1980, pl. 22; Baumann 2010, Taf. 3, 2.

# Troesmis, residual finds: Rhodian amphora fragments of Hellenistic times



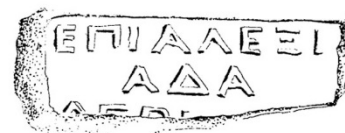
ΕΠΙ  
ΠΑΥΣΑ/ΝΙΑ/  
ΥΑΚΙΝΘΙΟΥ  
209-199 BC

1

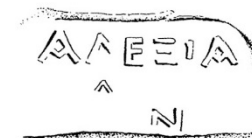


ΠΥΘΟΓΕΝΗΣ  
160-146 BC

2



3



4

(ΕΠΙ)  
ΑΛΕΞΙΑ  
ΔΑΣ  
ΑΓΡΙΑΝ  
ΟΣ  
145-133  
BC



5 ΔΑΜΟΚΡΑΤΕΥΣ III  
145-88/86 BC

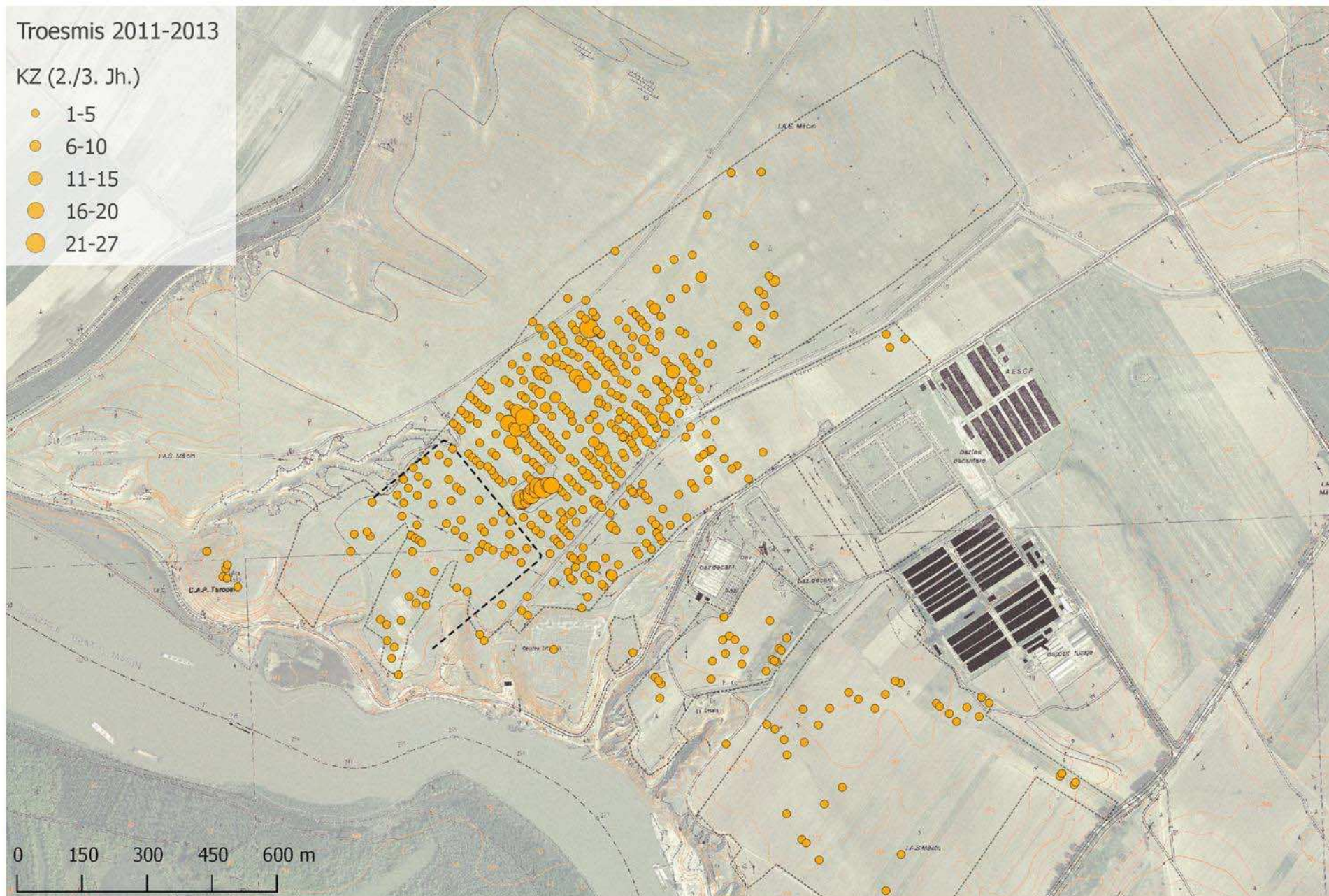
Rhodian amphora stamps found in 1969 „...pe un promontoriu aflat la 500 m castrul de vest al Troemisului“ (N. C. IONESCU, CITEVA TOARTE DE AMFORA STAMPILATE, DESCOPERITE IN APROPIEREA TROESMISULUI, Pontica 3, 1970)

# TROESMIS SURVEY: Pottery of Roman Imperial times (2nd-3rd c. AD), distribution

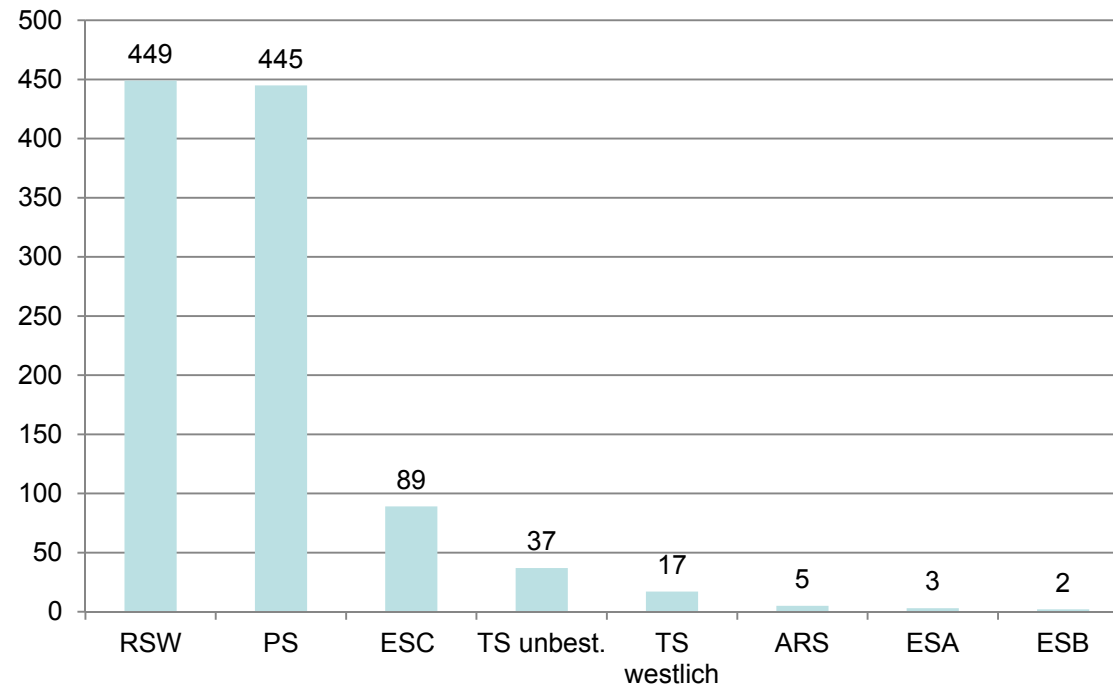
Troesmis 2011-2013

KZ (2./3. Jh.)

- 1-5
- 6-10
- 11-15
- 16-20
- 21-27



TROESMIS SURVEY: Fine wares of the Roman imperial period





TROESMIS SURVEY: Eastern Sigillata C (ESC), South Gaulish TS,  
African Red Slip Ware (ARS), TS from Rheinzabern



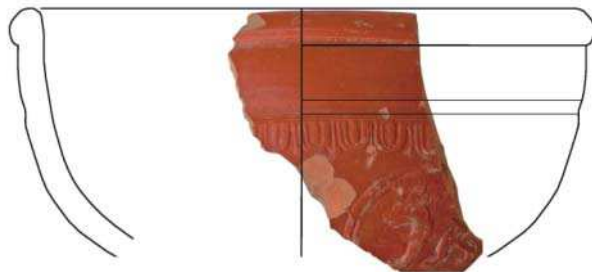
Eastern Sigillata C (ESC)



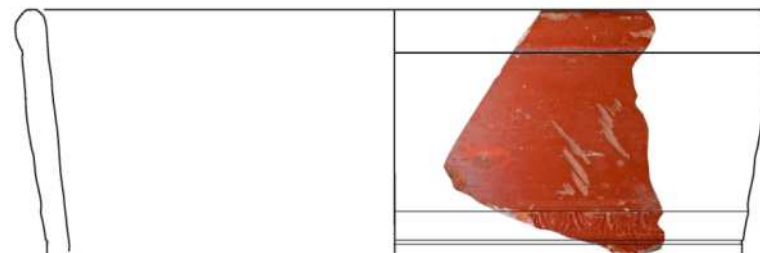
South Gaulish TS



ARS



TS Rheinzabern



# TROESMIS SURVEY: Pontic Sigillata



# TROESMIS SURVEY: Red Slip Ware (RSW)

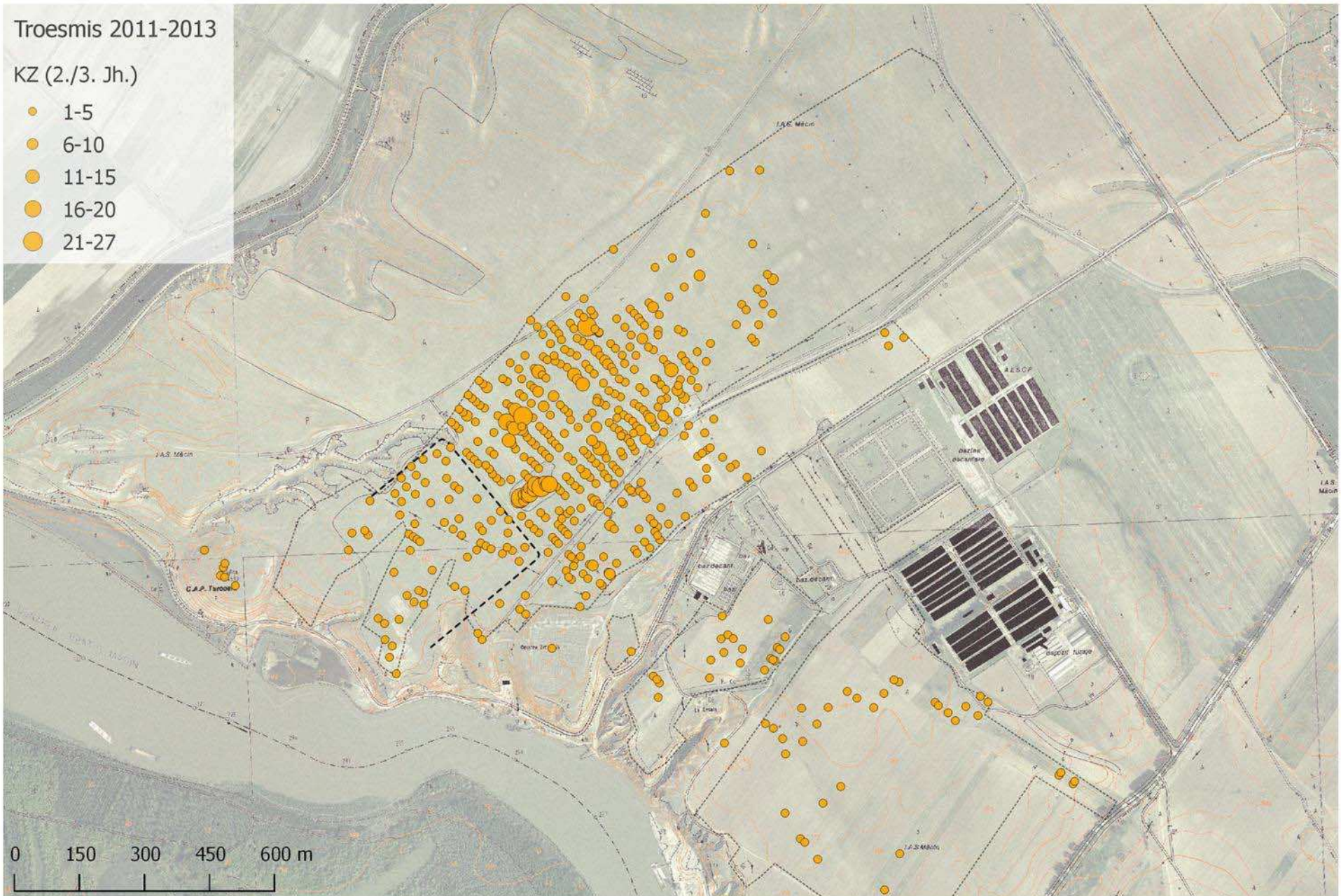


# TROESMIS SURVEY: Pottery of Roman Imperial times (2nd-3rd c. AD), distribution

Troesmis 2011-2013

KZ (2./3. Jh.)

- 1-5
- 6-10
- 11-15
- 16-20
- 21-27

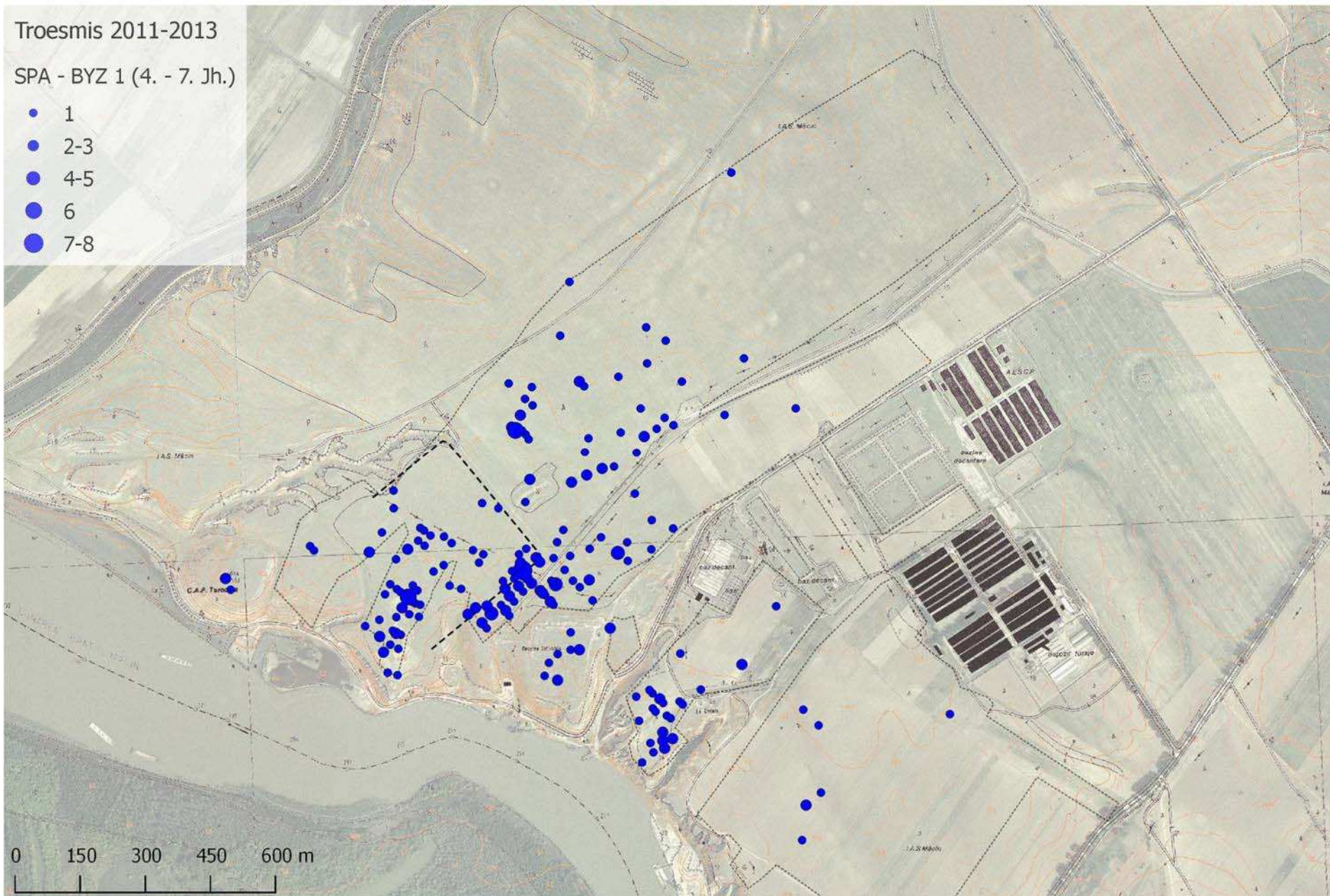


# TROESMIS SURVEY: Late Antique and Early Byzantine pottery (4th–7th c. AD), distribution

Troesmis 2011-2013

SPA - BYZ 1 (4. - 7. Jh.)

- 1
- 2-3
- 4-5
- 6
- 7-8

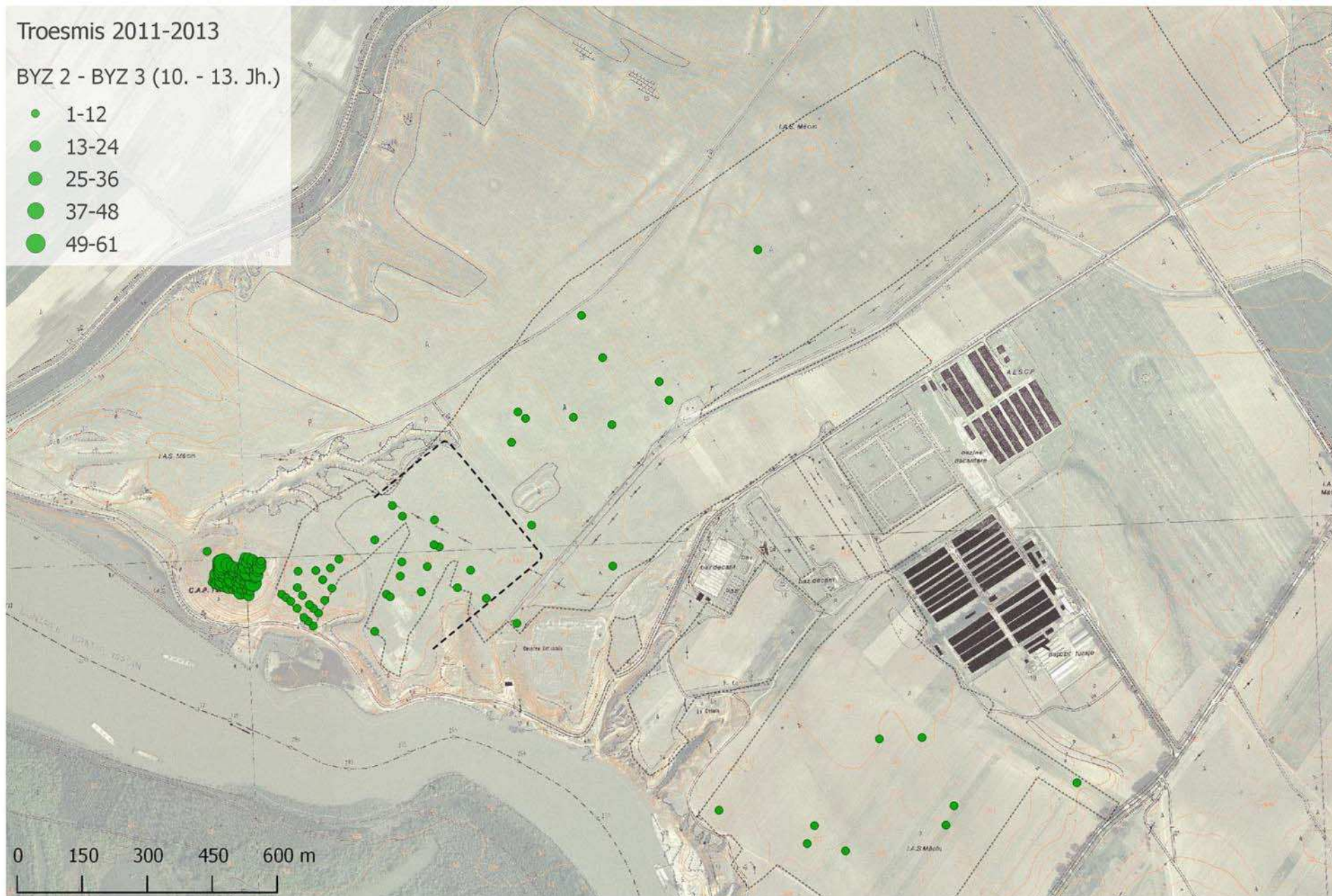


# TROESMIS SURVEY: Middle Byzantine Pottery (10th-13th c. AD), distribution

Troesmis 2011-2013

BYZ 2 - BYZ 3 (10. - 13. Jh.)

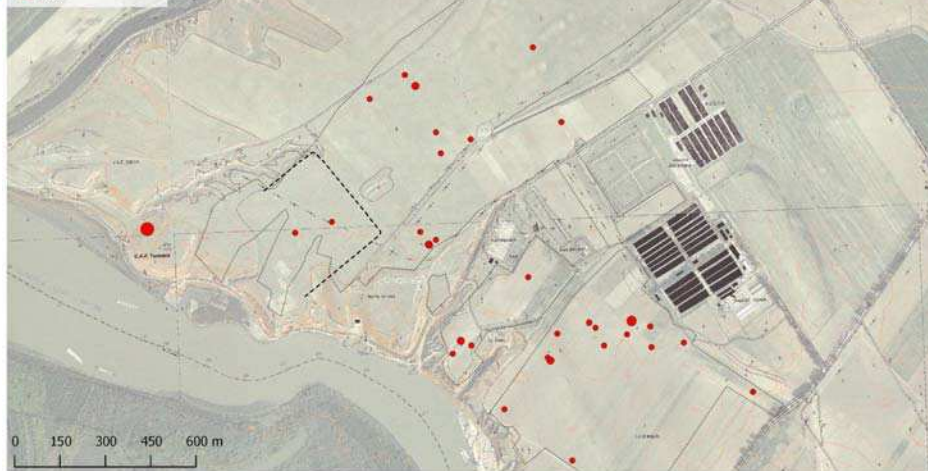
- 1-12
- 13-24
- 25-36
- 37-48
- 49-61



Troesmis 2011-2013

Vorlegionslagerzeitlich

- 1
- 2
- 3
- 20



Troesmis 2011-2013

KZ (2./3. Jh.)

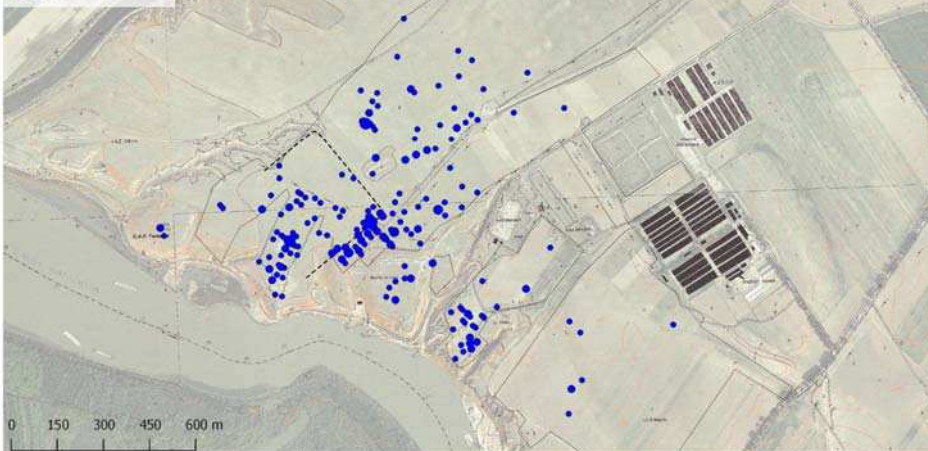
- 1-5
- 6-10
- 11-15
- 16-20
- 21-27



Troesmis 2011-2013

SPA - BYZ 1 (4. - 7. Jh.)

- 1
- 2-3
- 4-5
- 6
- 7-8



Troesmis 2011-2013

BYZ 2 - BYZ 3 (10. - 13. Jh.)

- 1-12
- 13-24
- 25-36
- 37-48
- 49-61



# Troesmis: Western fortress, finds from below the stone masonry M9

