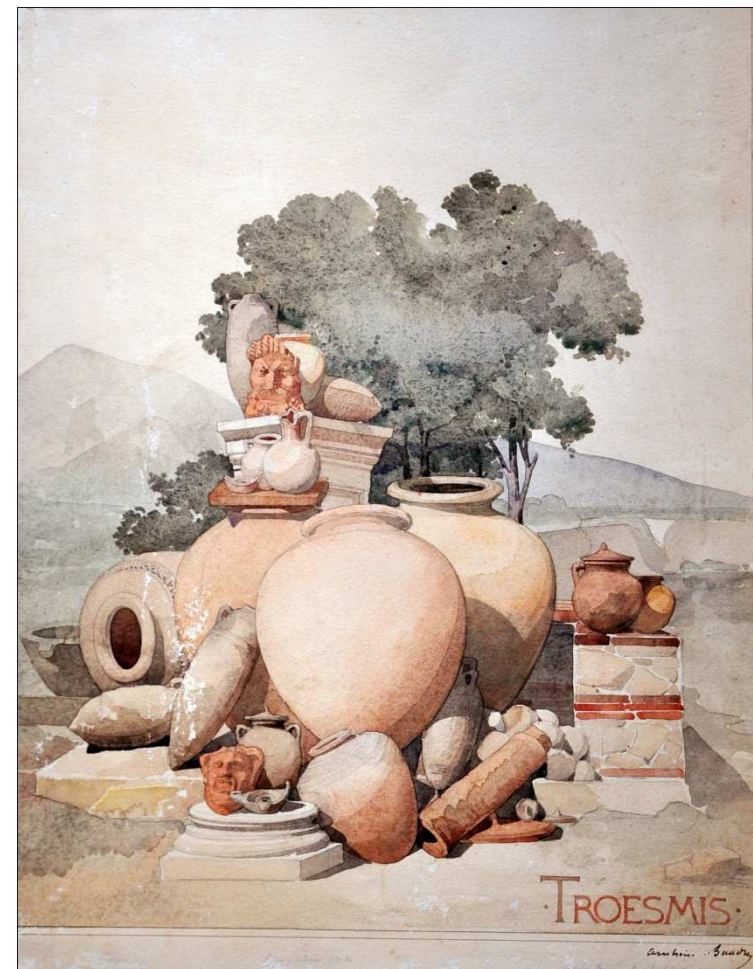


The Troesmis-Project 2011-2015

Geophysical Research at Troesmis

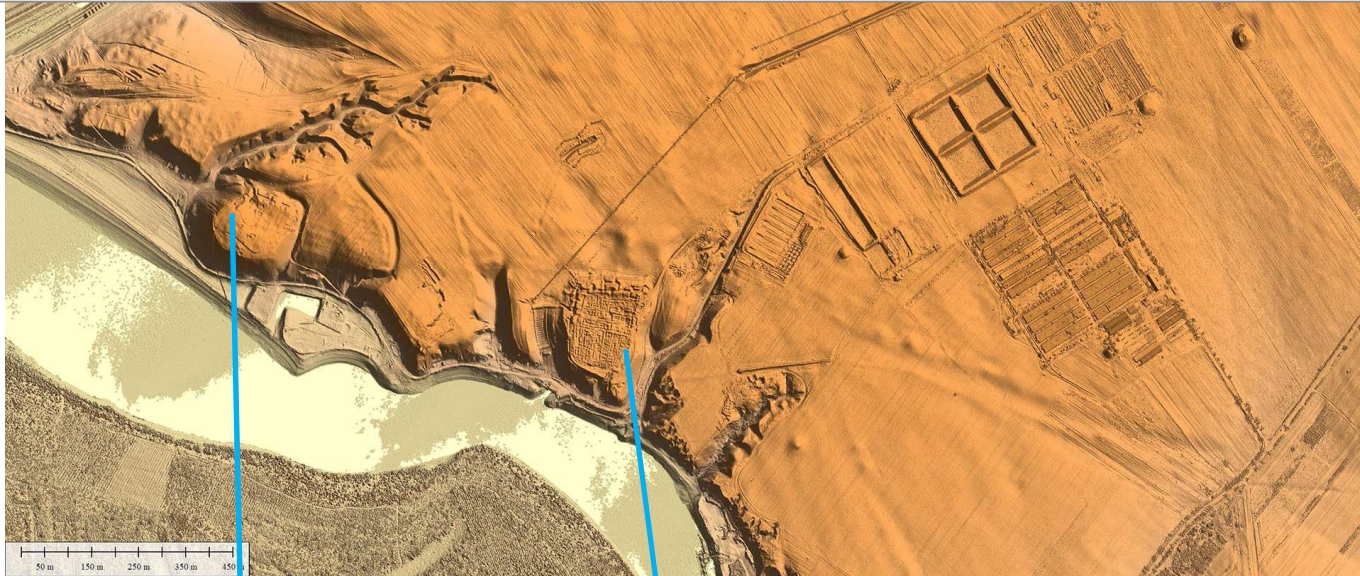


Gerald Grabherr – Barbara Kainrath

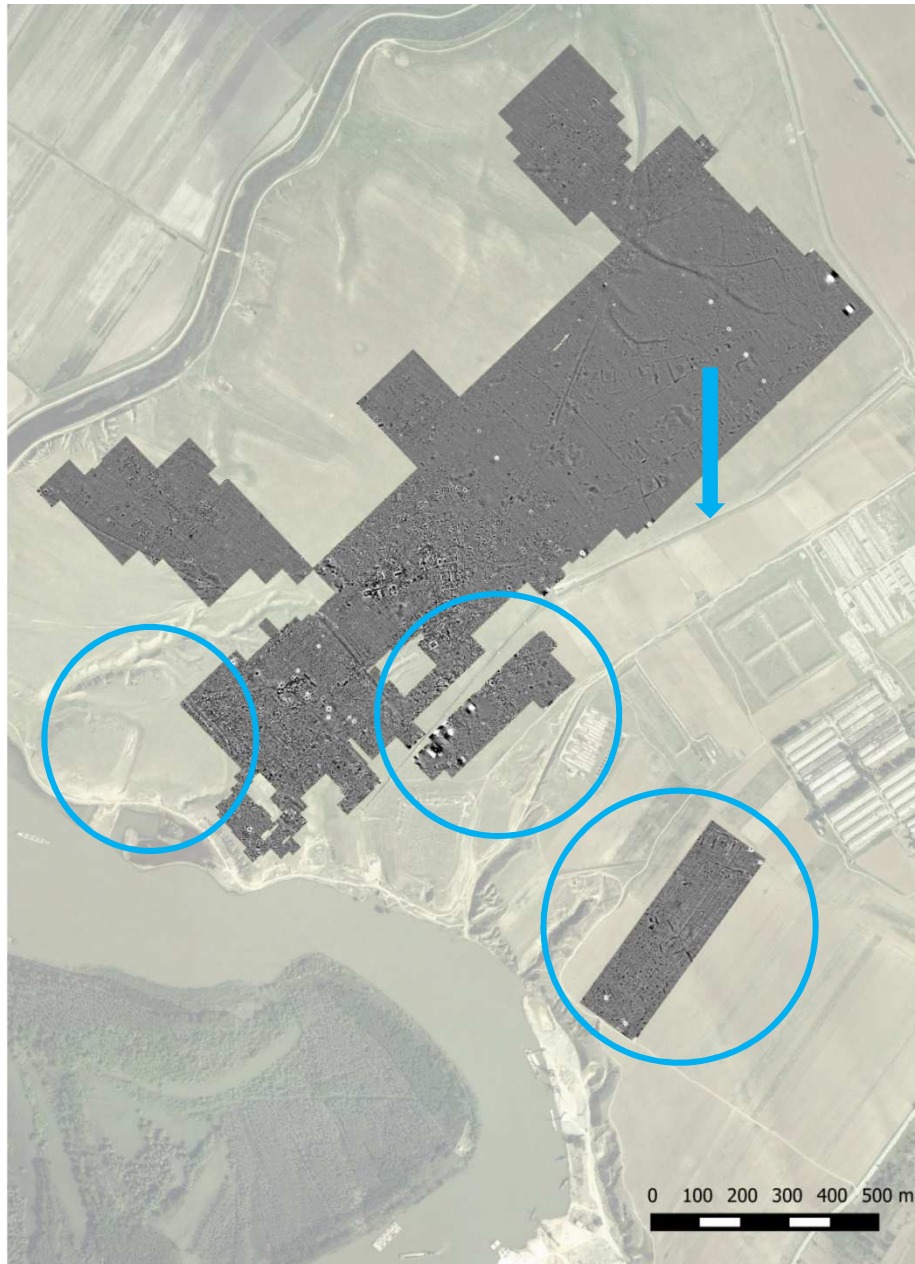
The prospected area 2011–2015



The prospected area



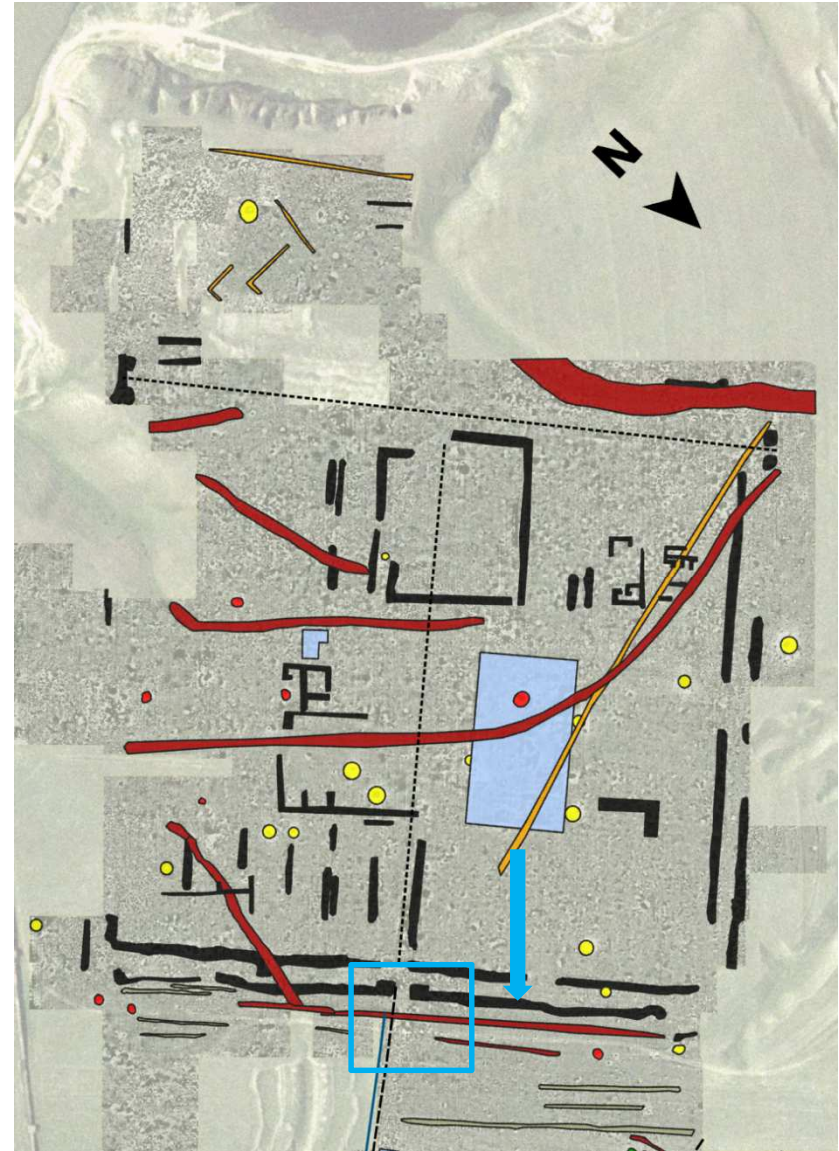
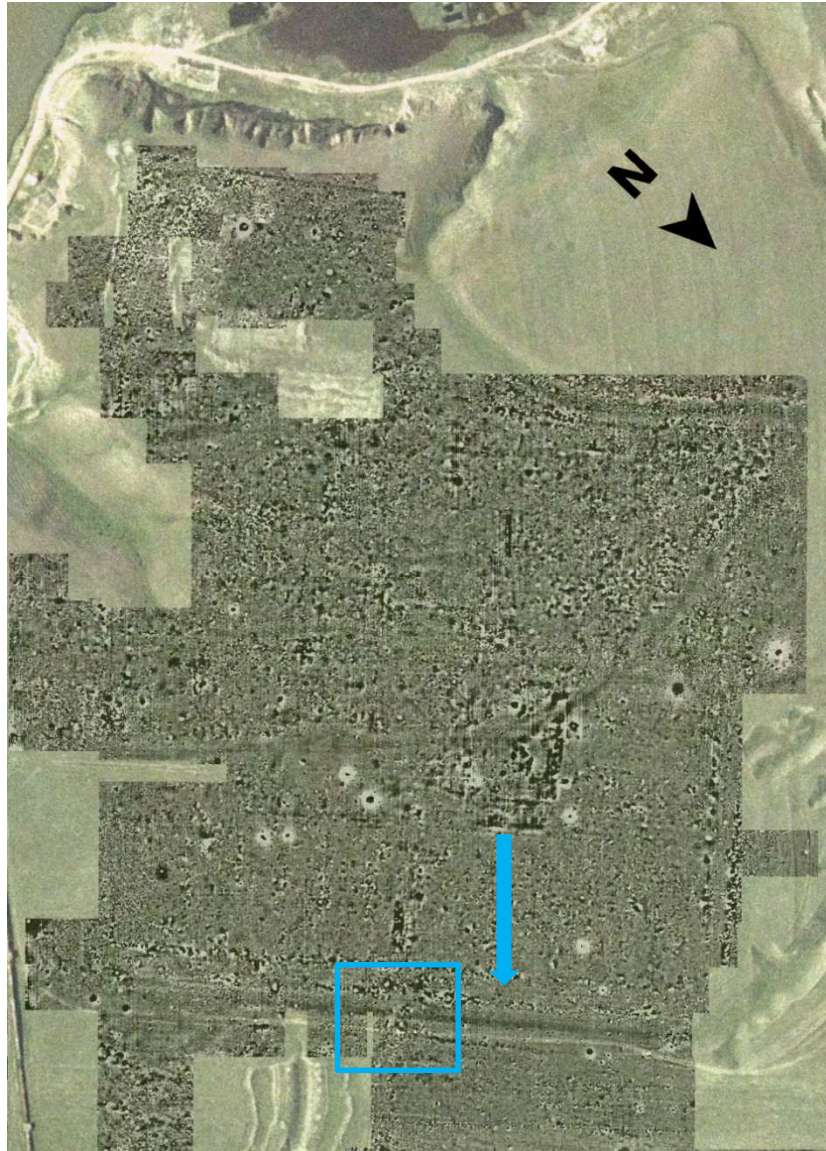
The prospected area



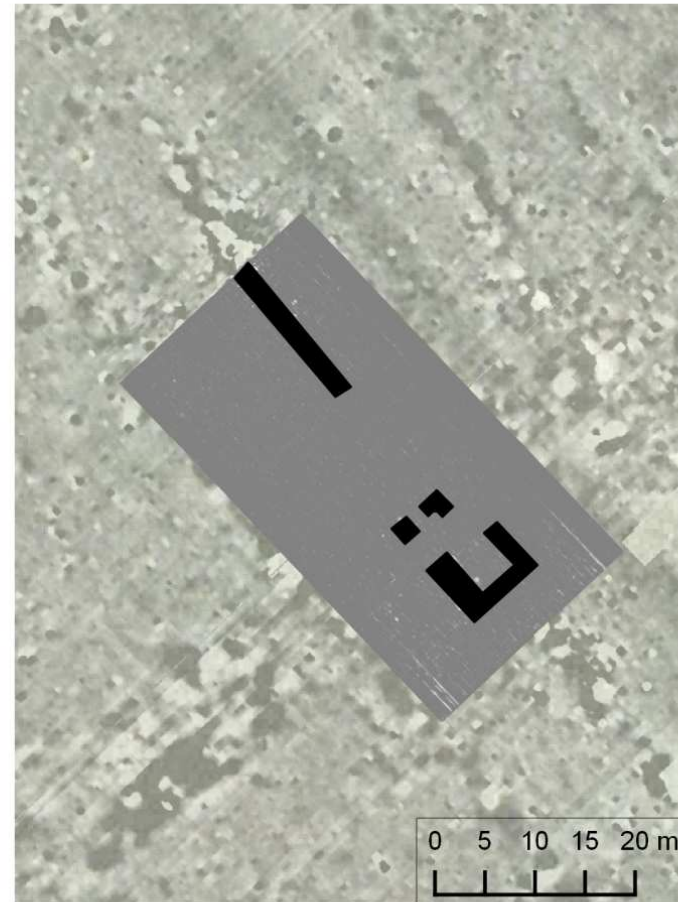
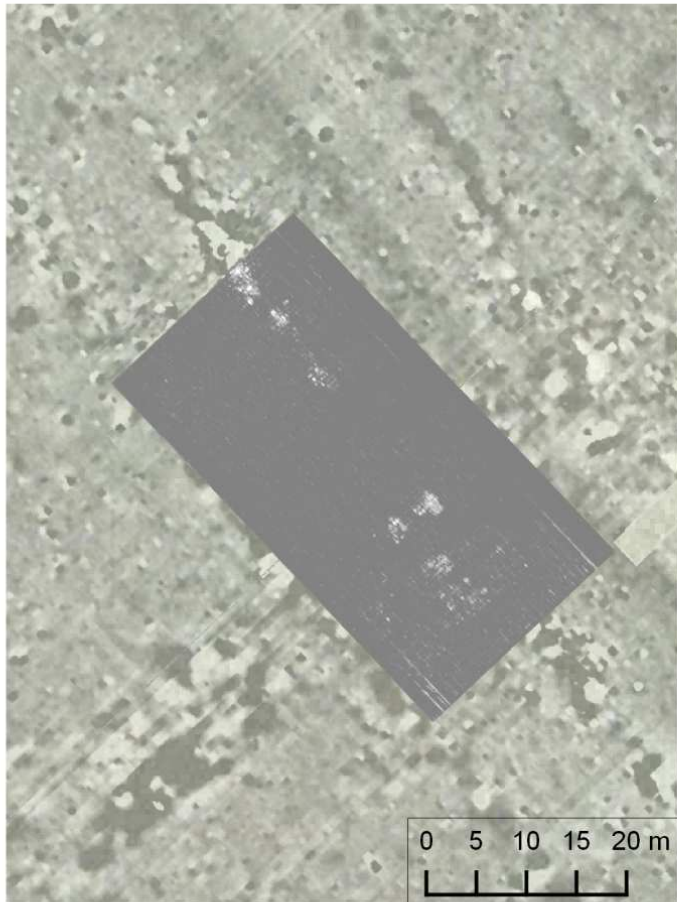
The fortress



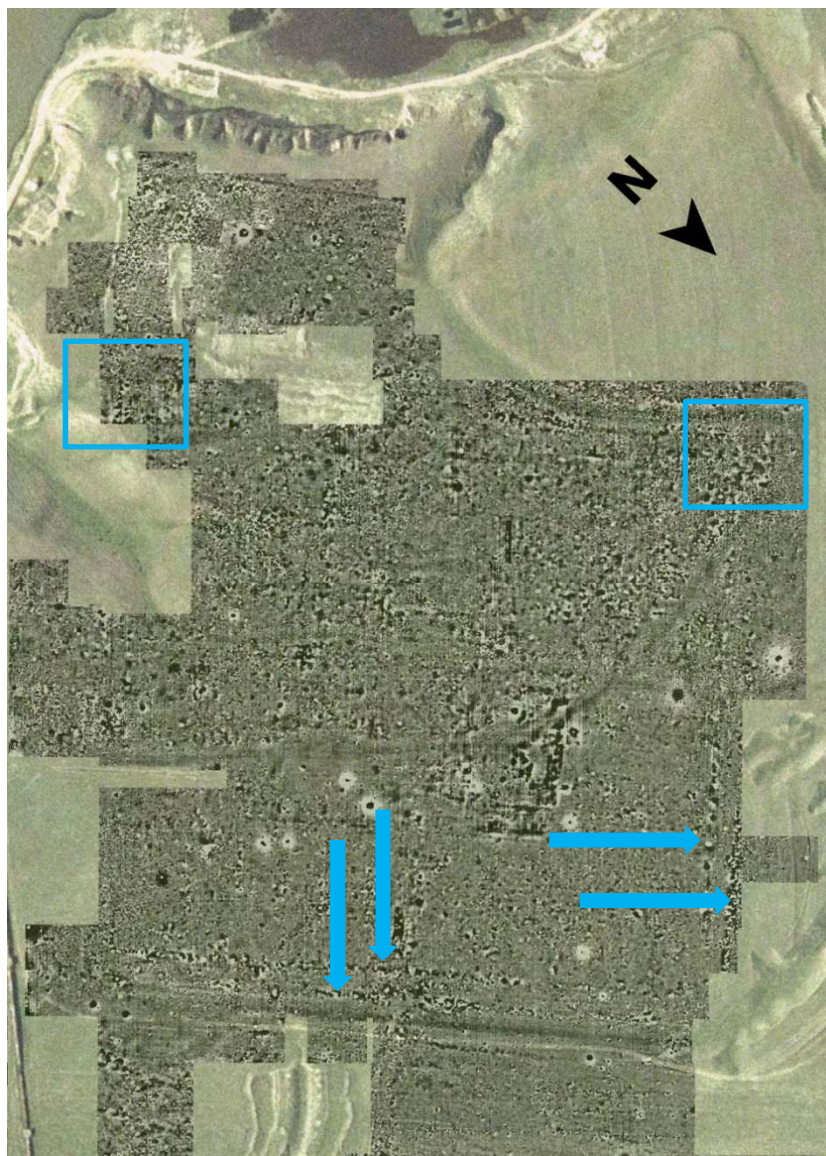
The fortress



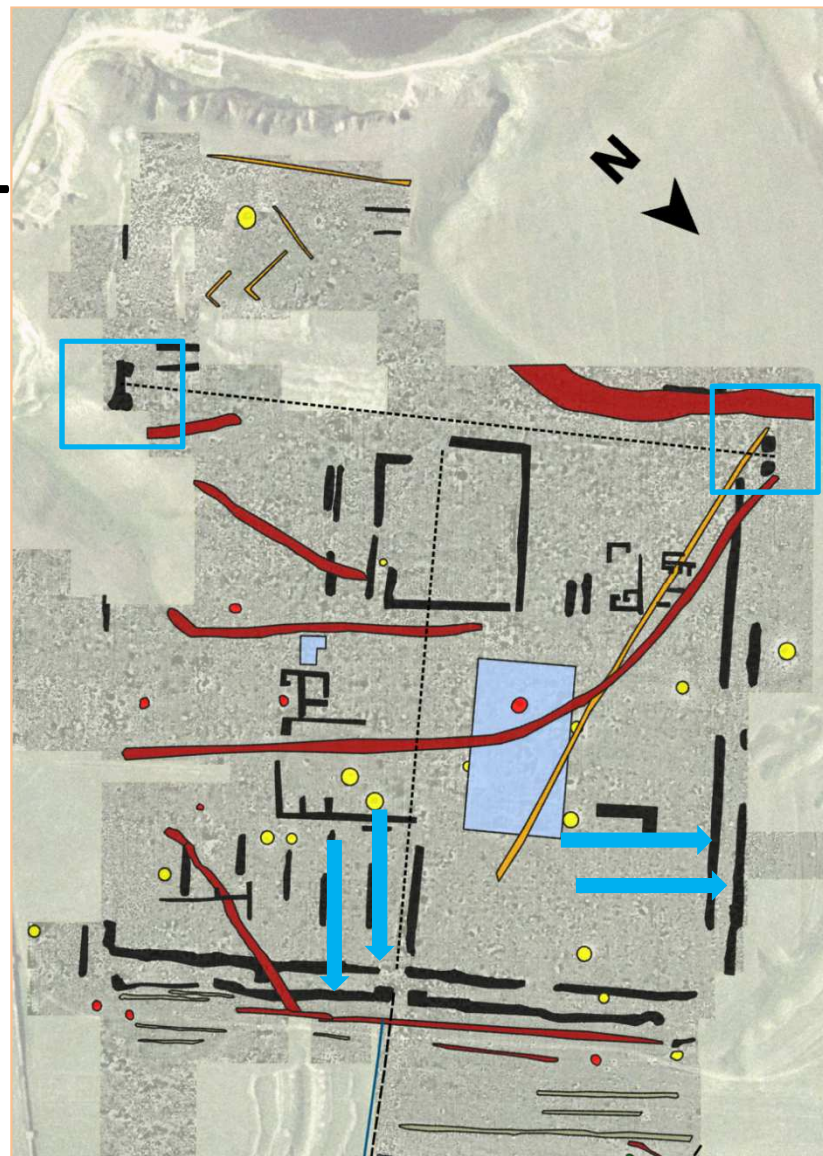
The fortress: *the porta decumana*



The fortress



11



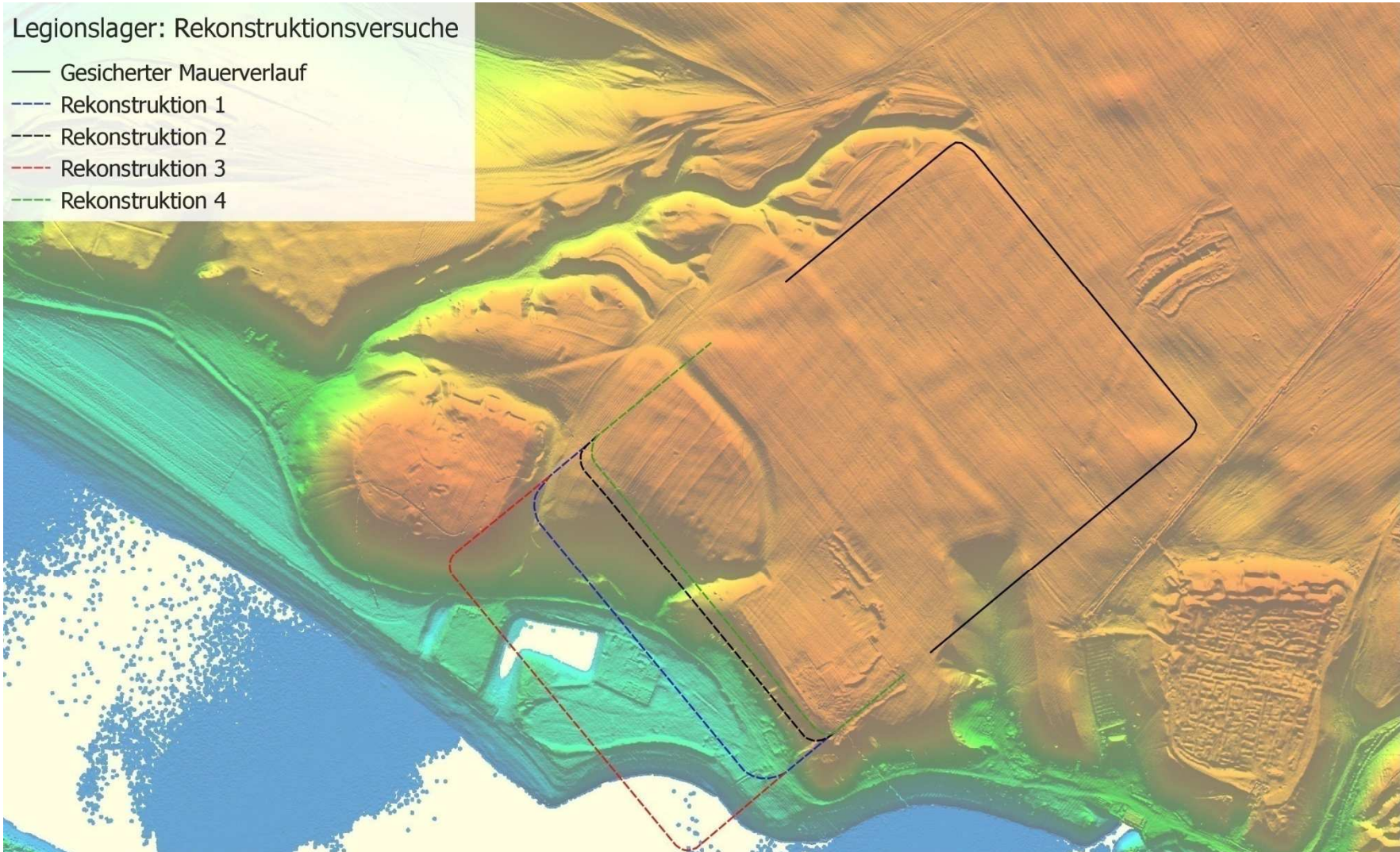
The fortress



The fortress: possible reconstructions

Legionslager: Rekonstruktionsversuche

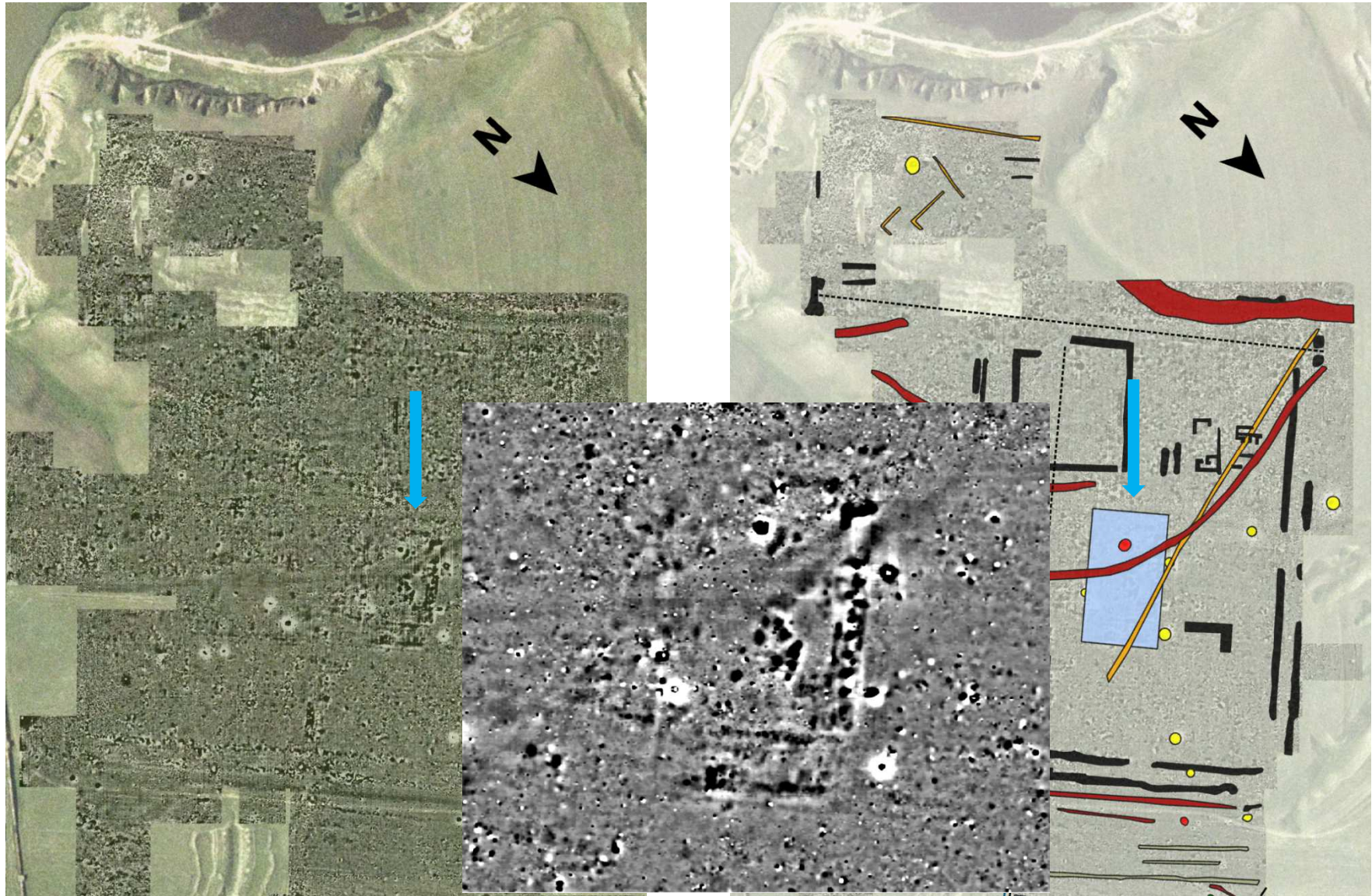
- Gesicherter Mauerverlauf
- - - - - Rekonstruktion 1
- - - - - Rekonstruktion 2
- - - - - Rekonstruktion 3
- - - - - Rekonstruktion 4



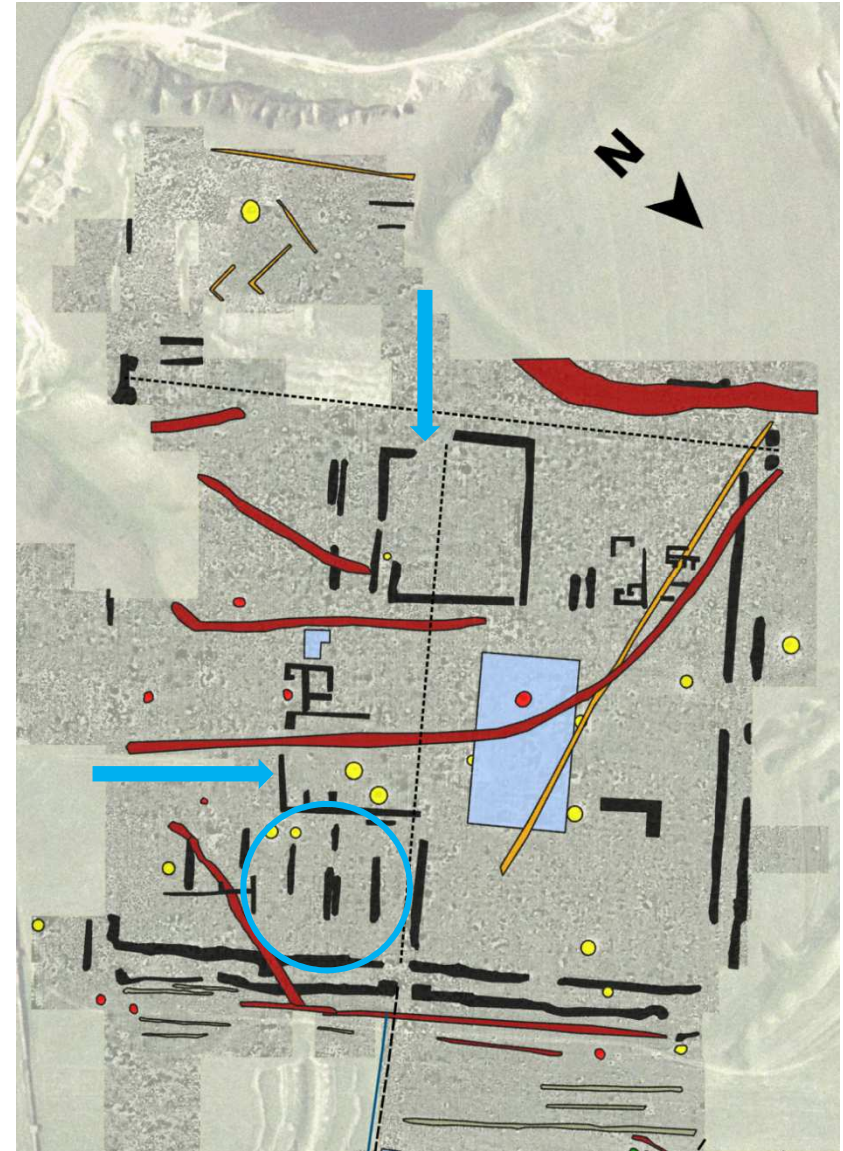
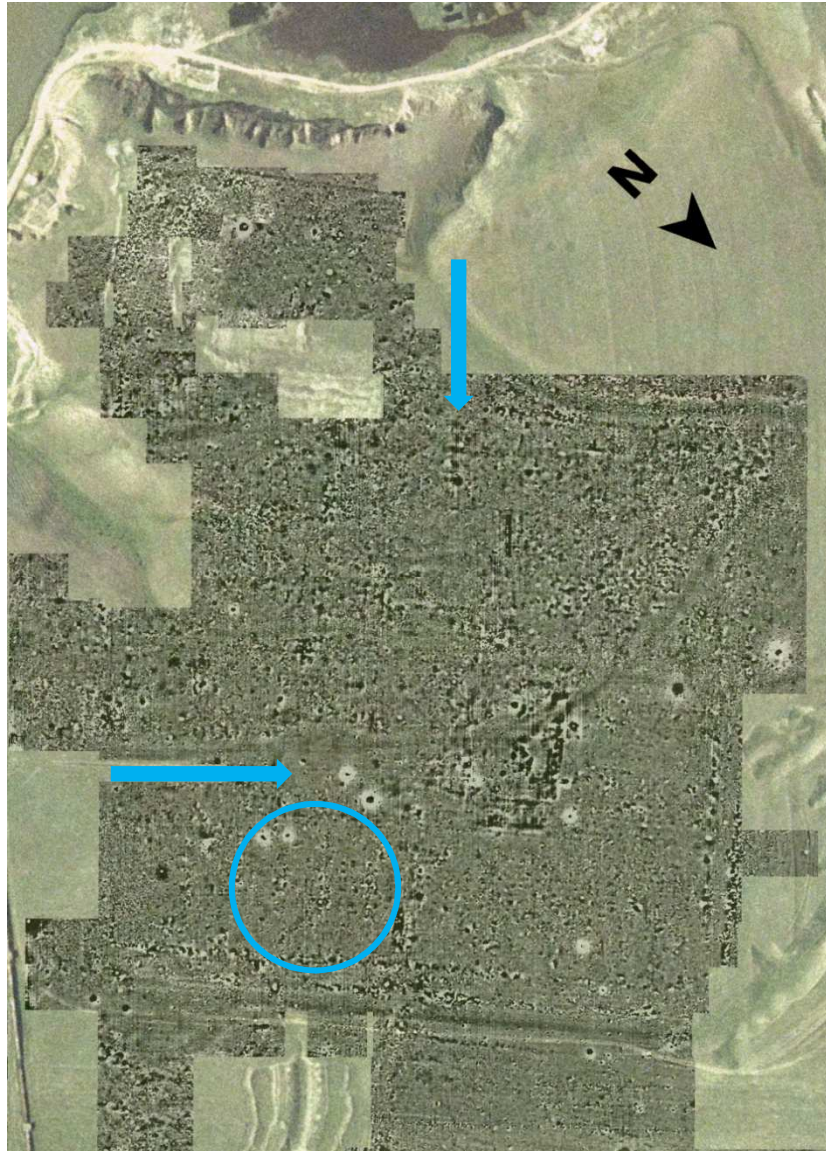
The fortress: walls of the interior



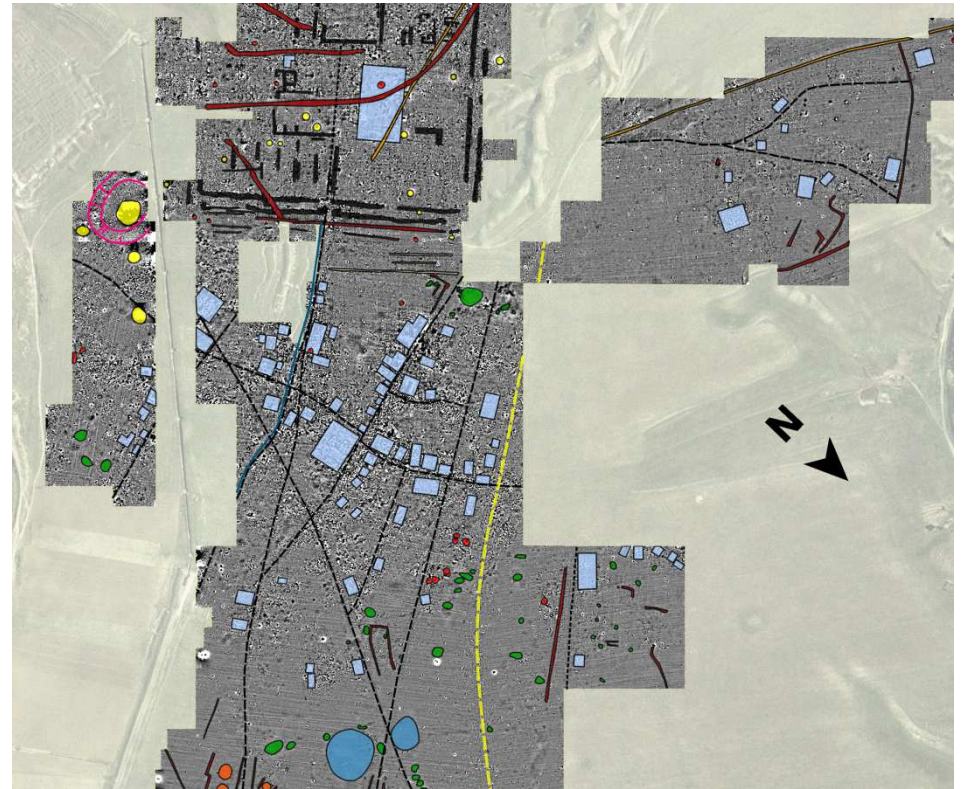
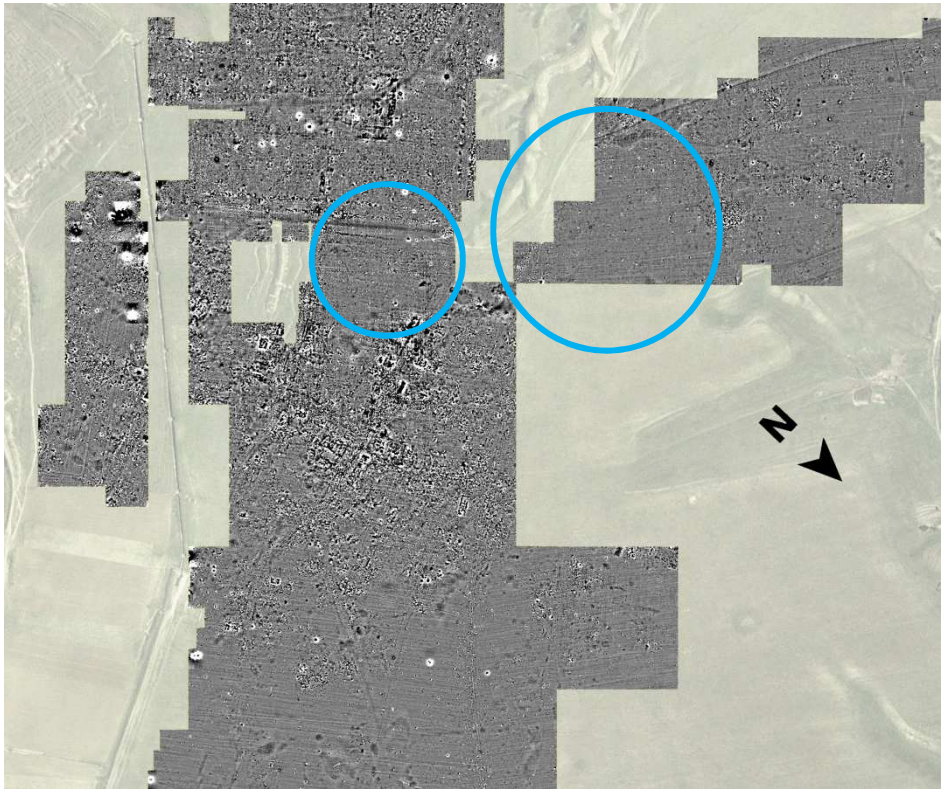
The fortress: *thermae*?



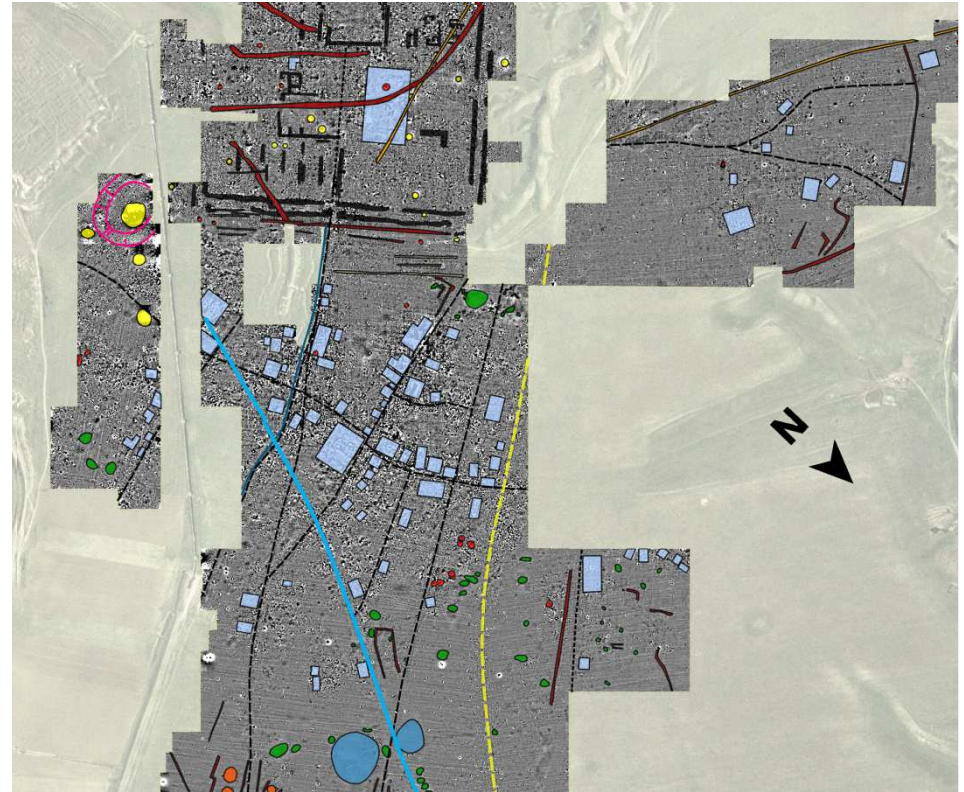
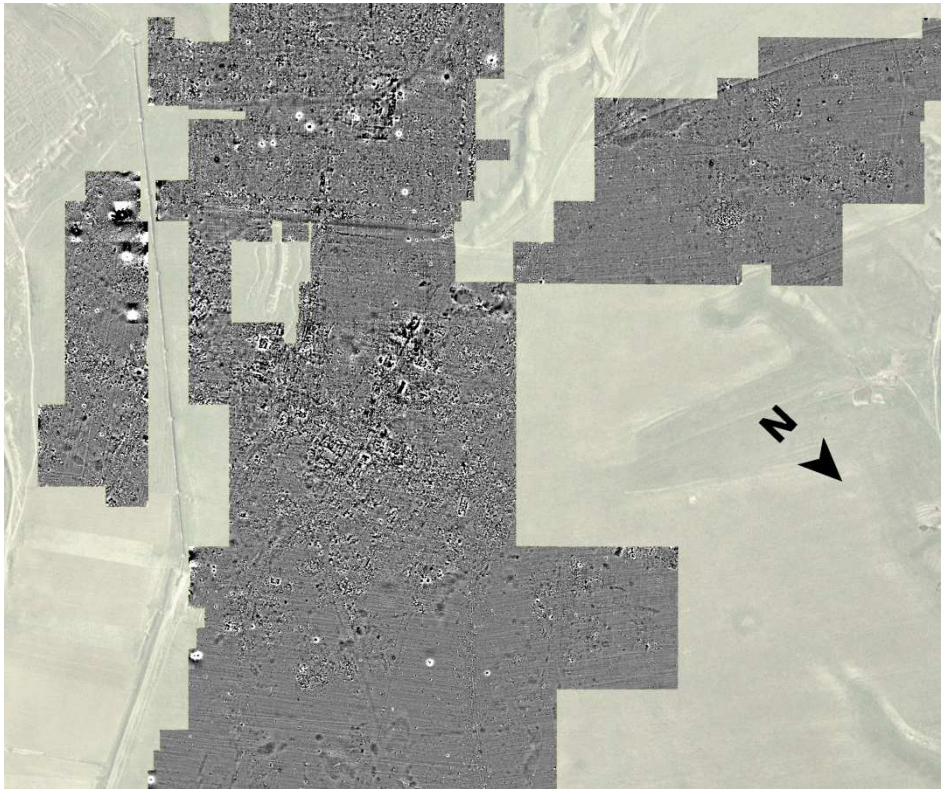
The fortress



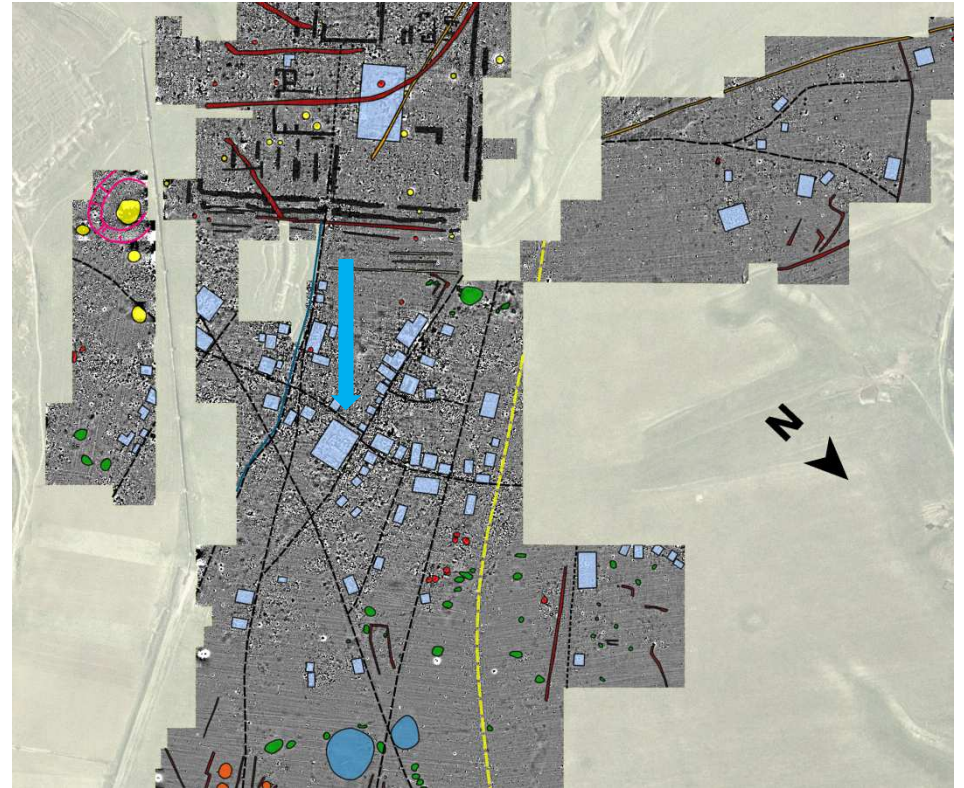
The *canabae*



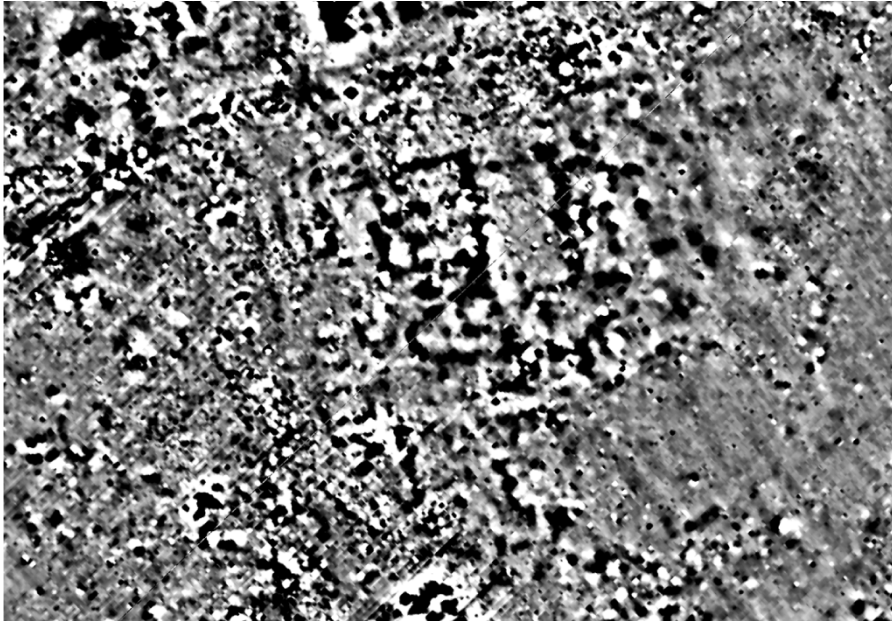
The *canabae*



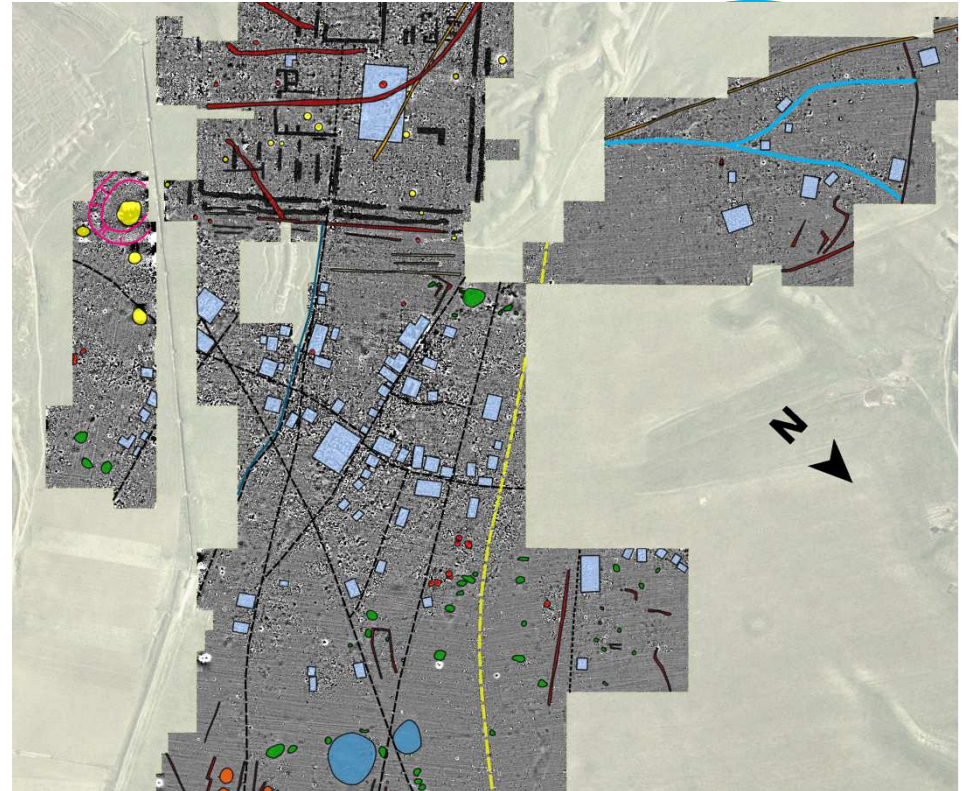
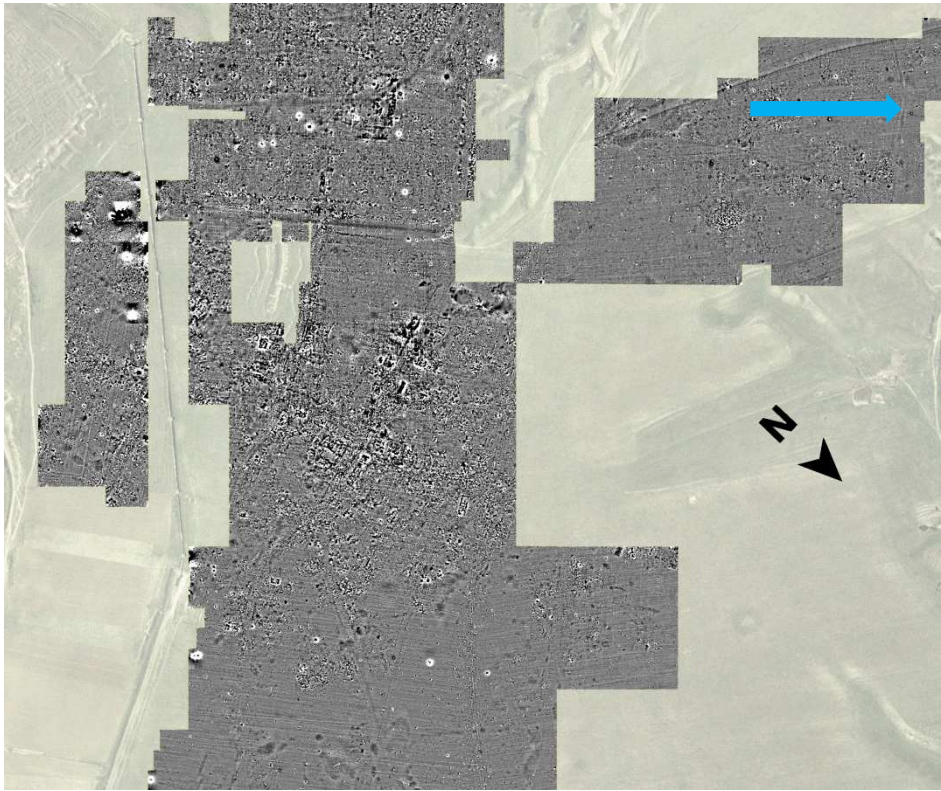
The *canabae*



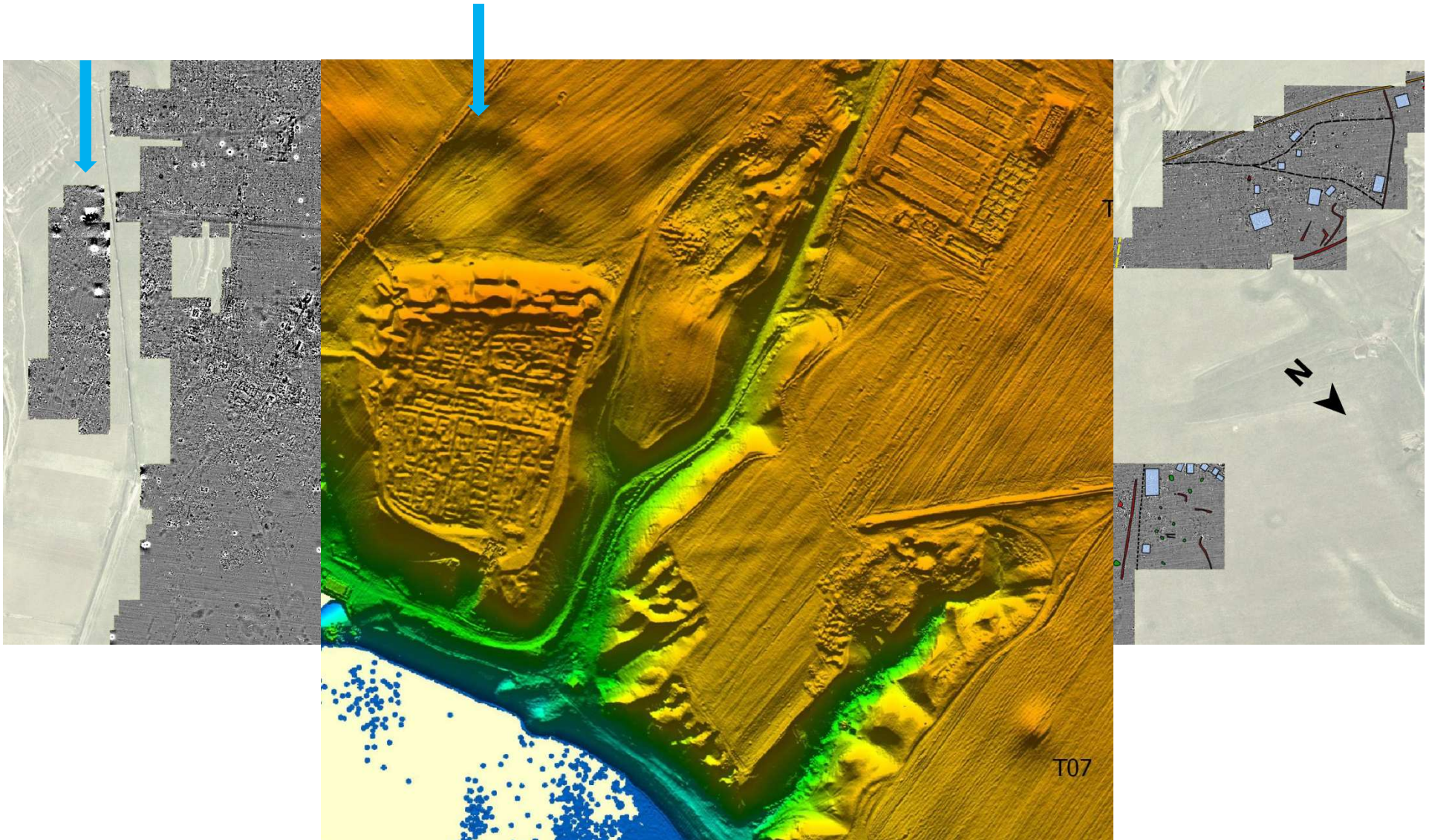
The *canabae*



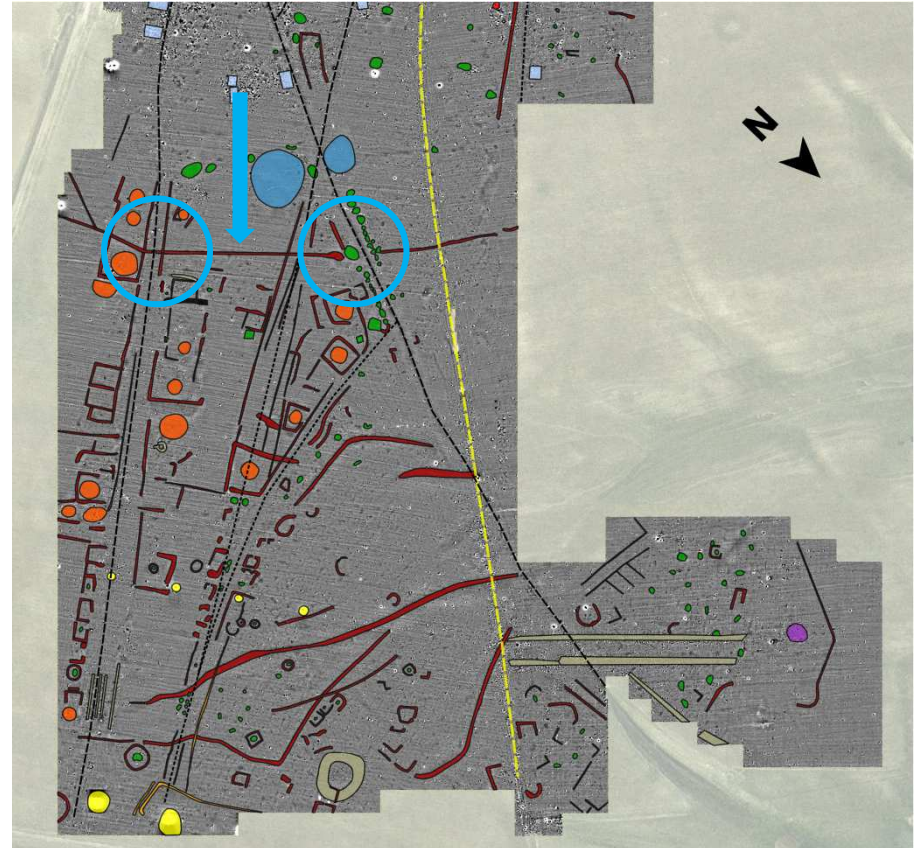
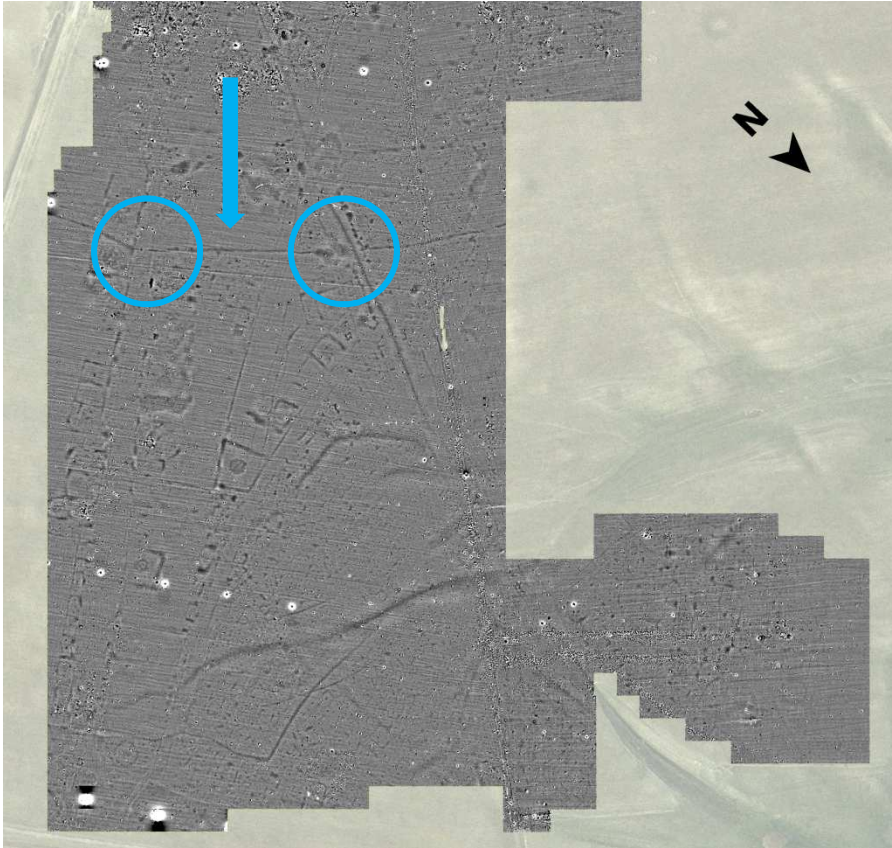
The *canabae*



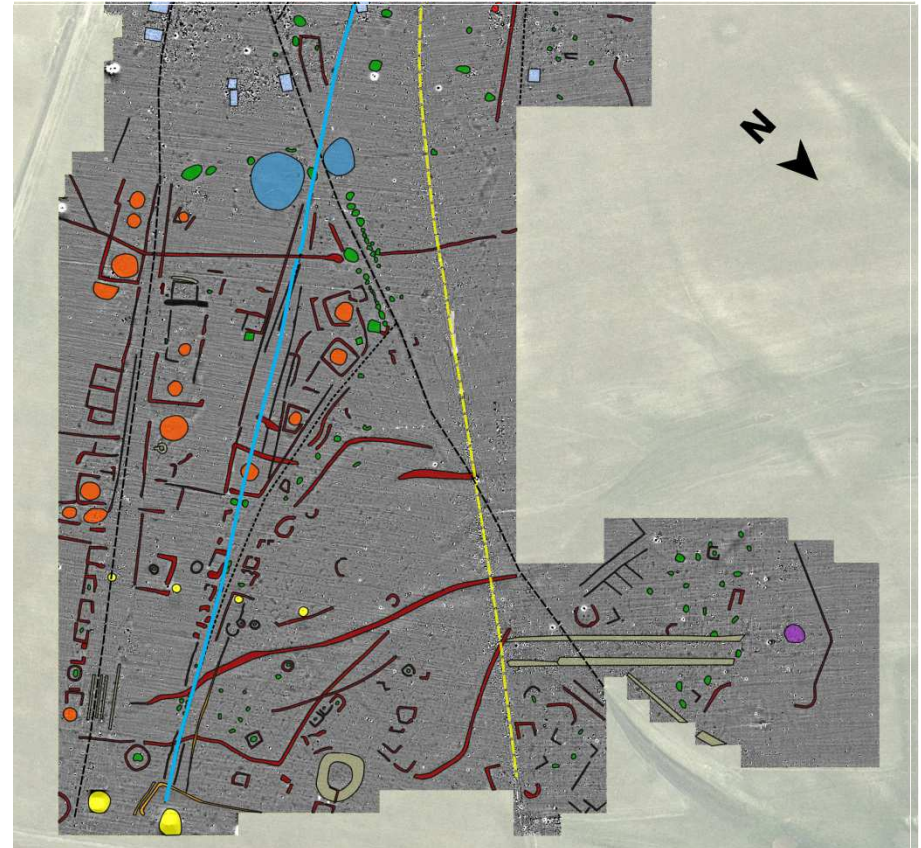
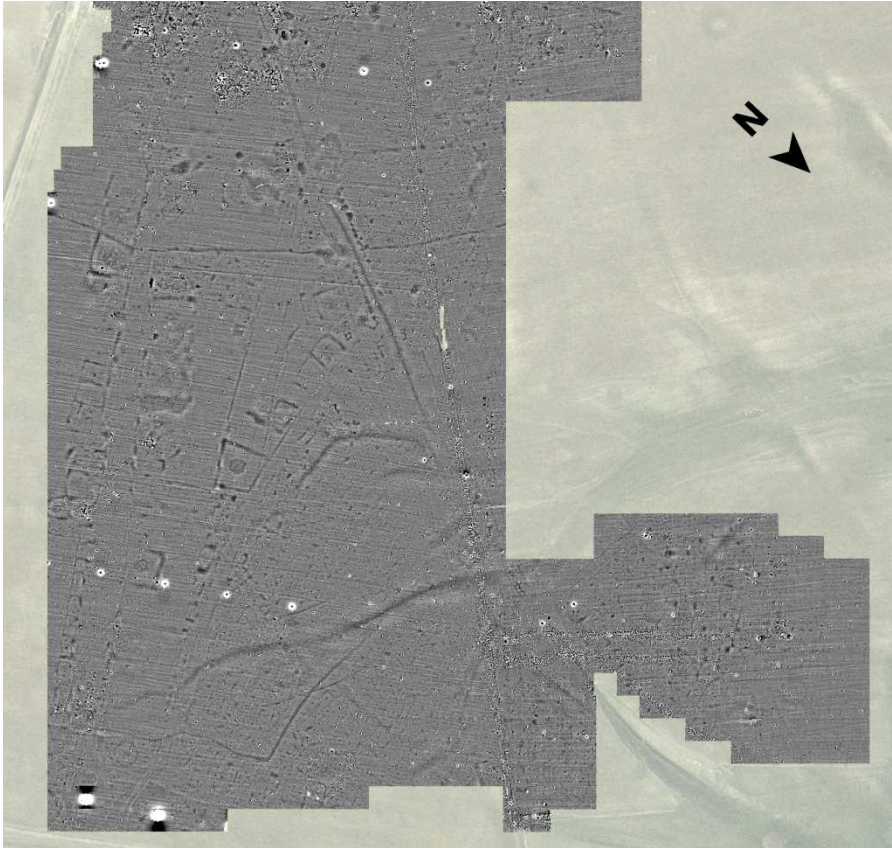
The *canabae*



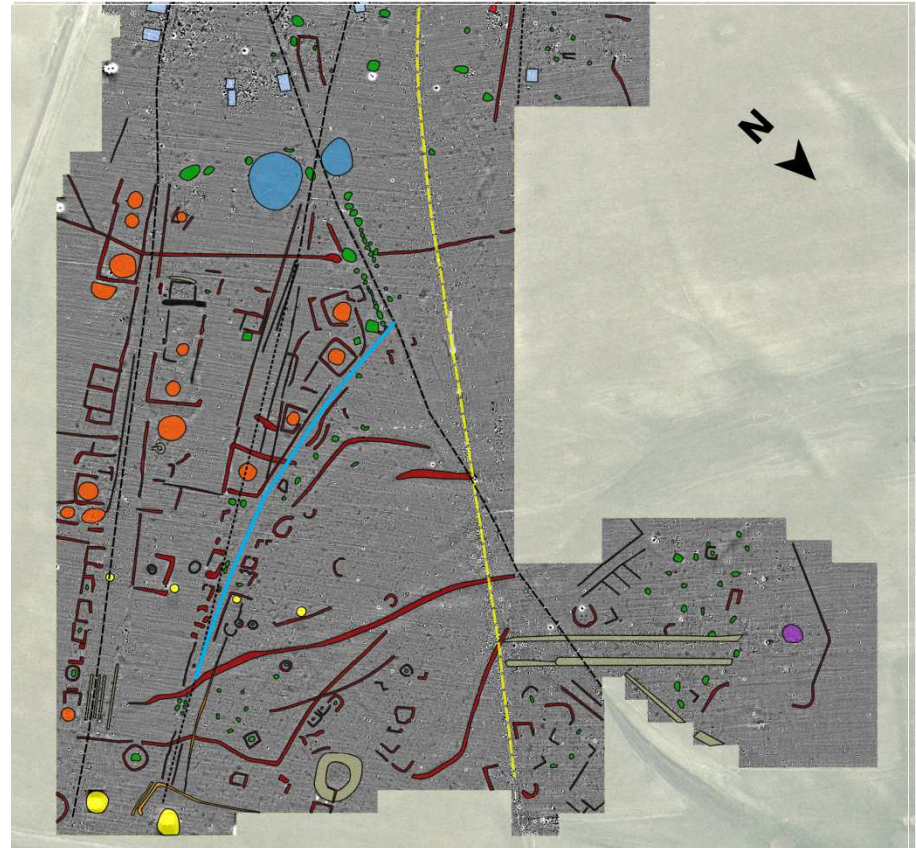
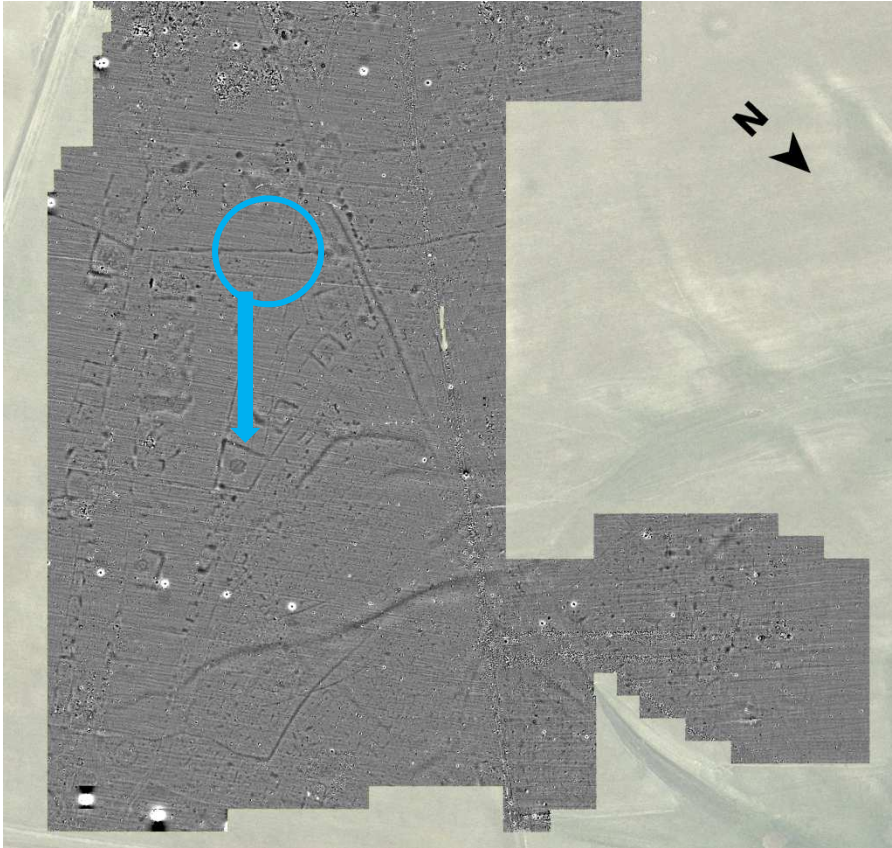
The cemeteries



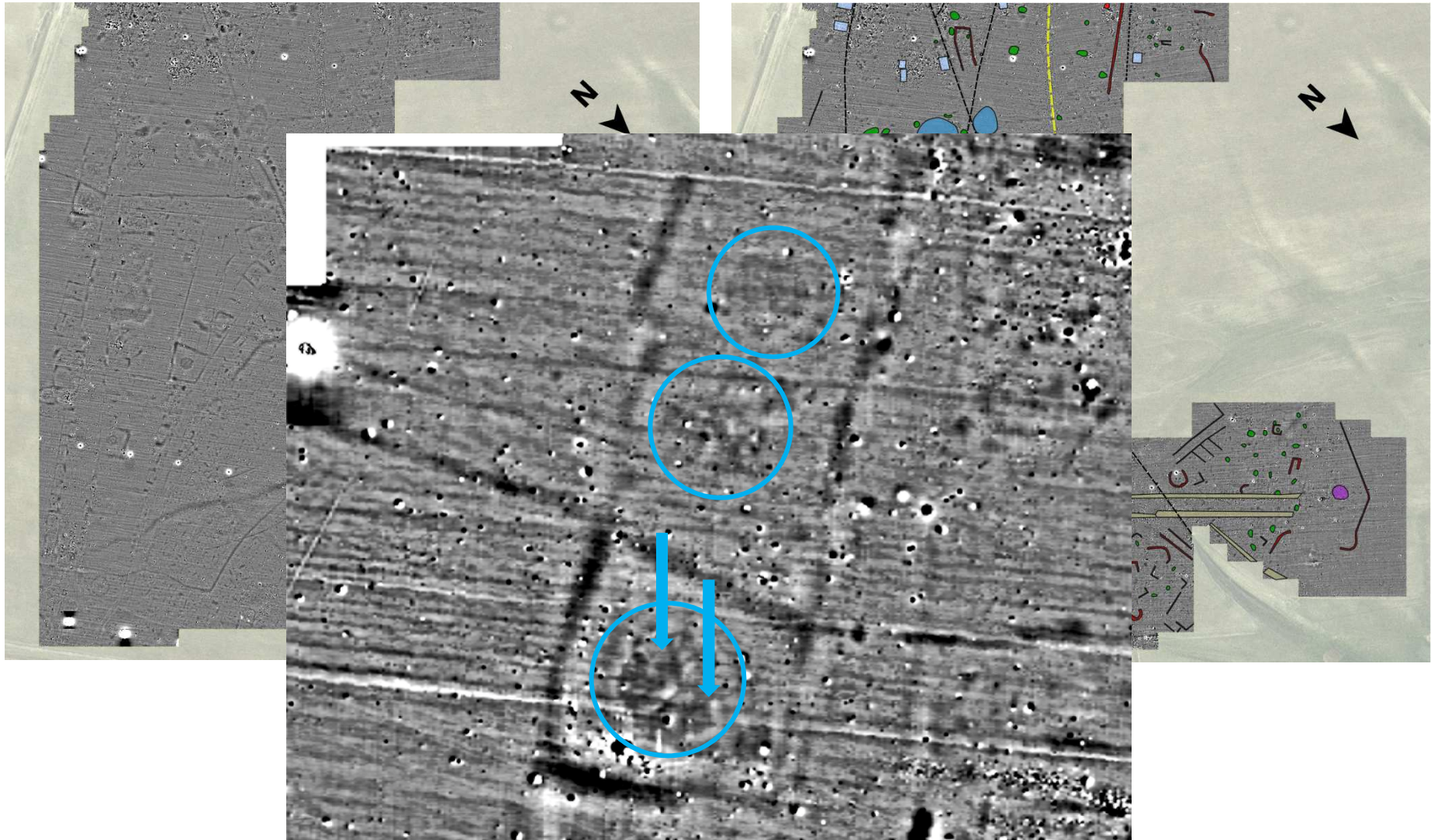
The cemeteries



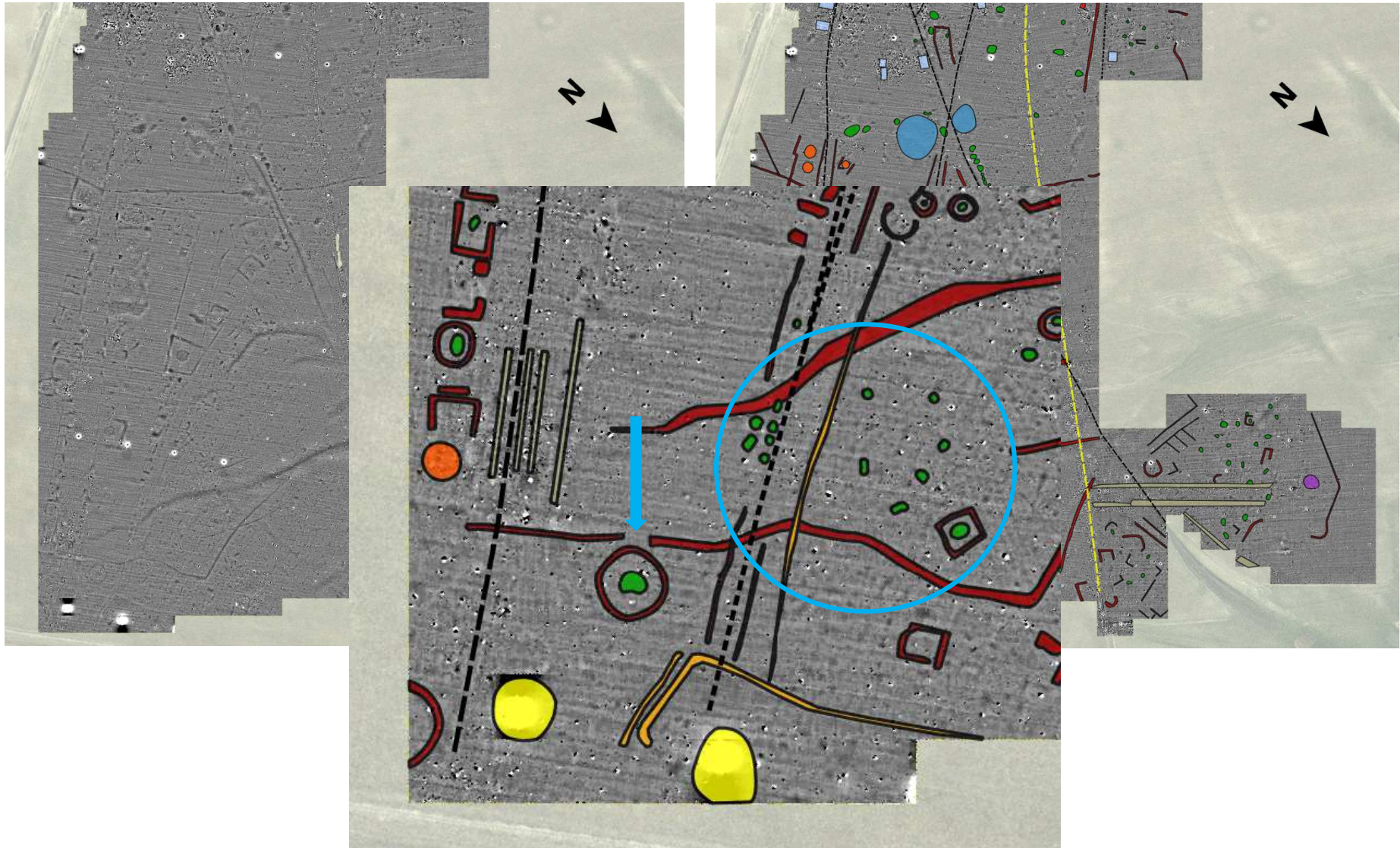
The cemeteries



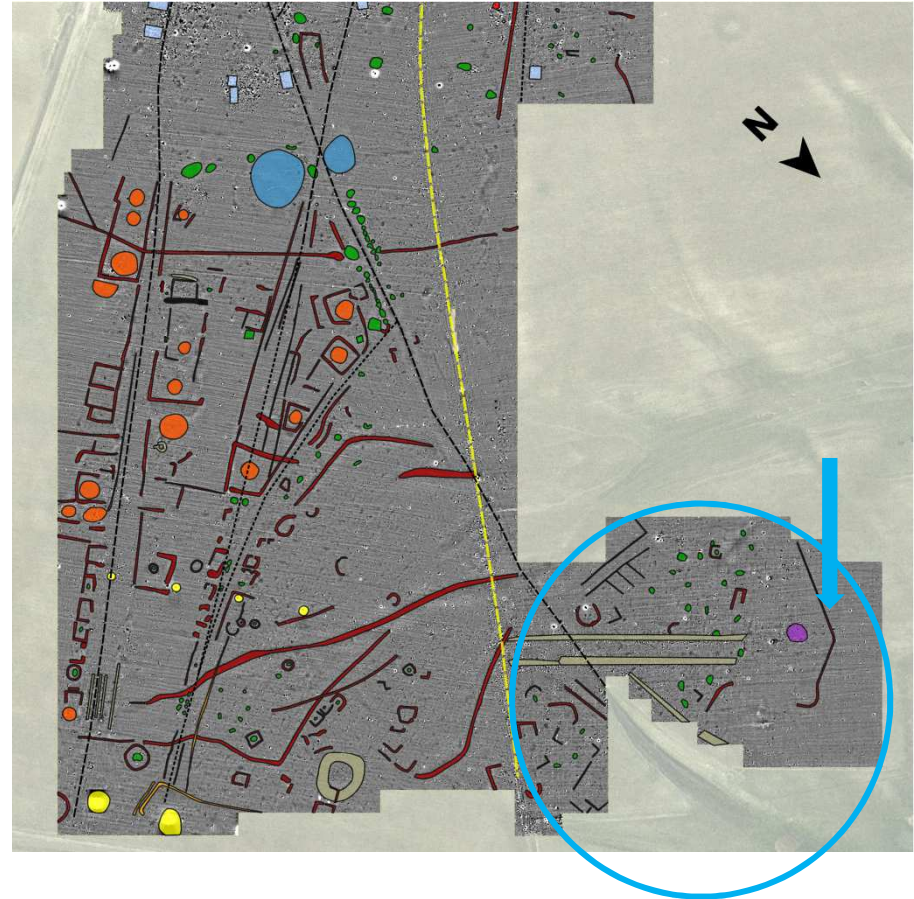
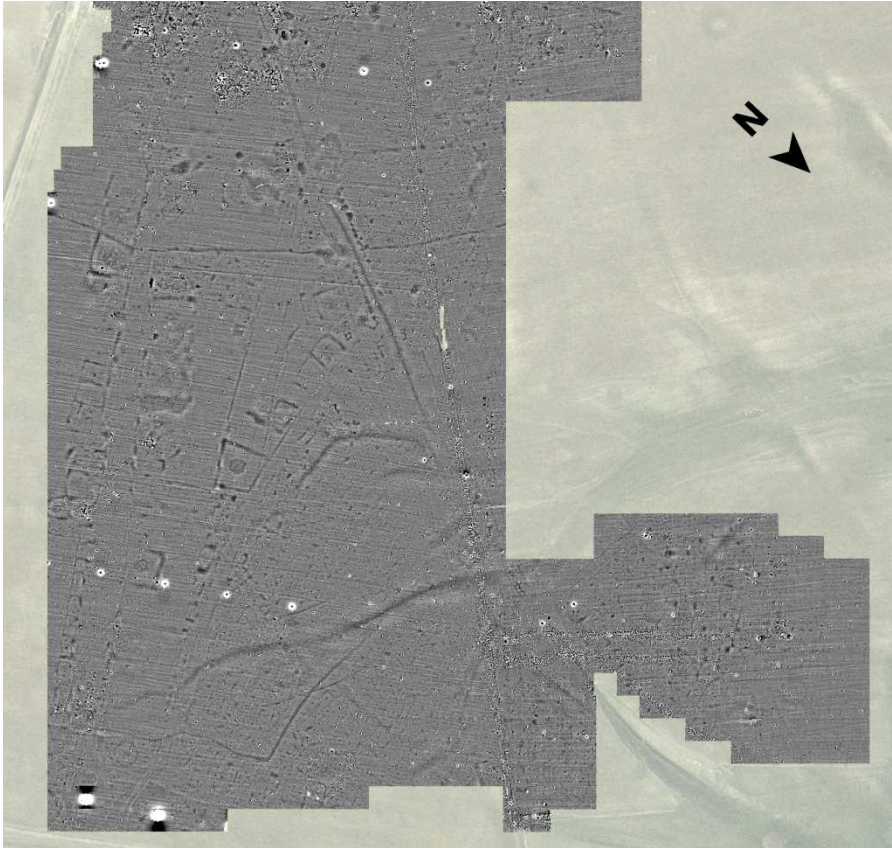
The cemeteries



The cemeteries



The cemeteries



The cemeteries



The cemeteries



Conclusions



