

**On the lithic materials from *Troesmis*:
local resources and imports**

Cristina-Georgeta Alexandrescu
Institutul de Arheologie Vasile Pârvan
București





Map by Laurie & Whittle, 1794

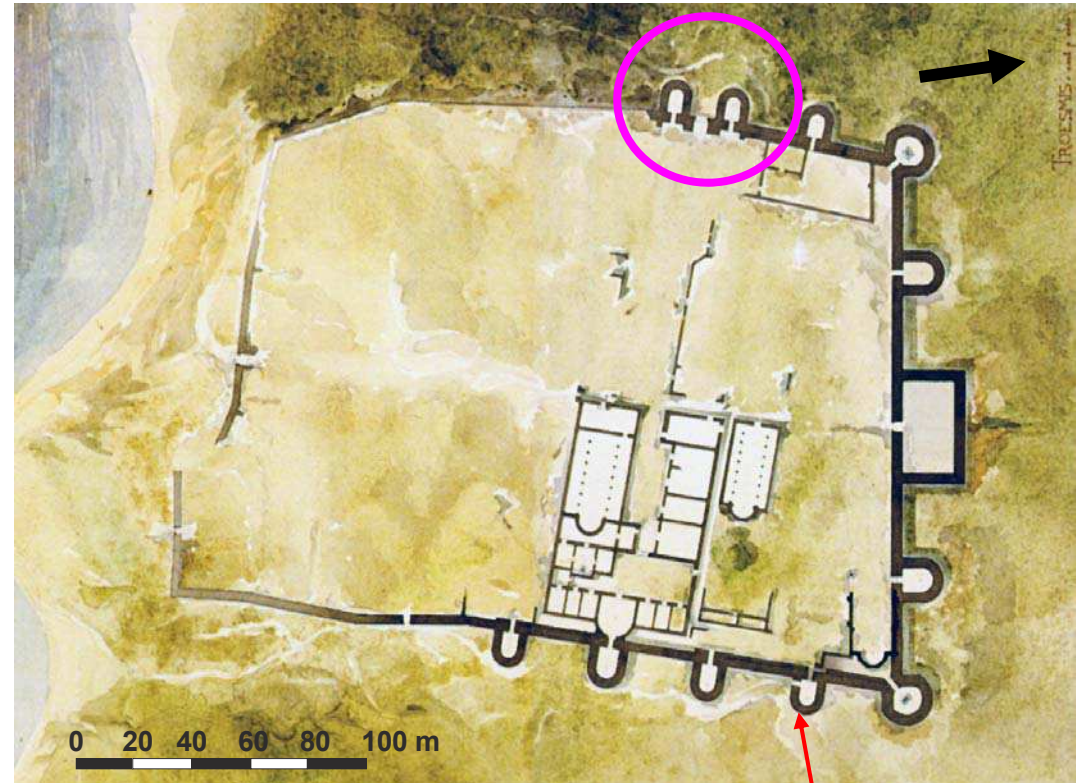
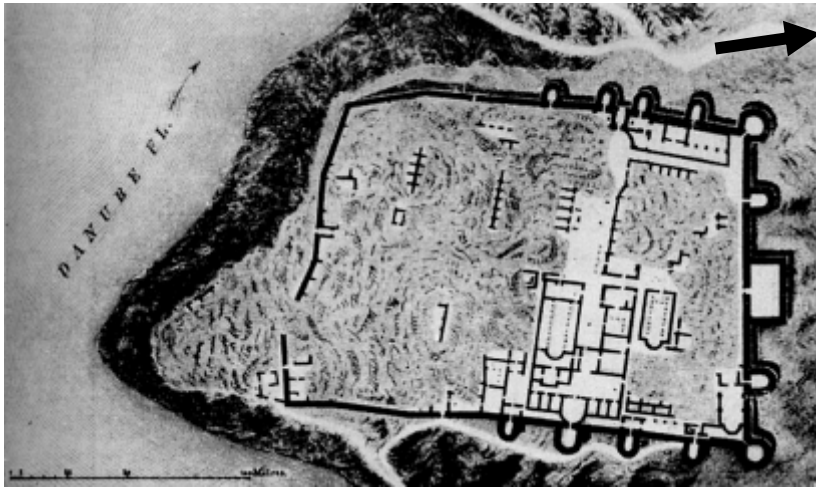


Map by W. Faden, 1795

Stonemasons today in Greece

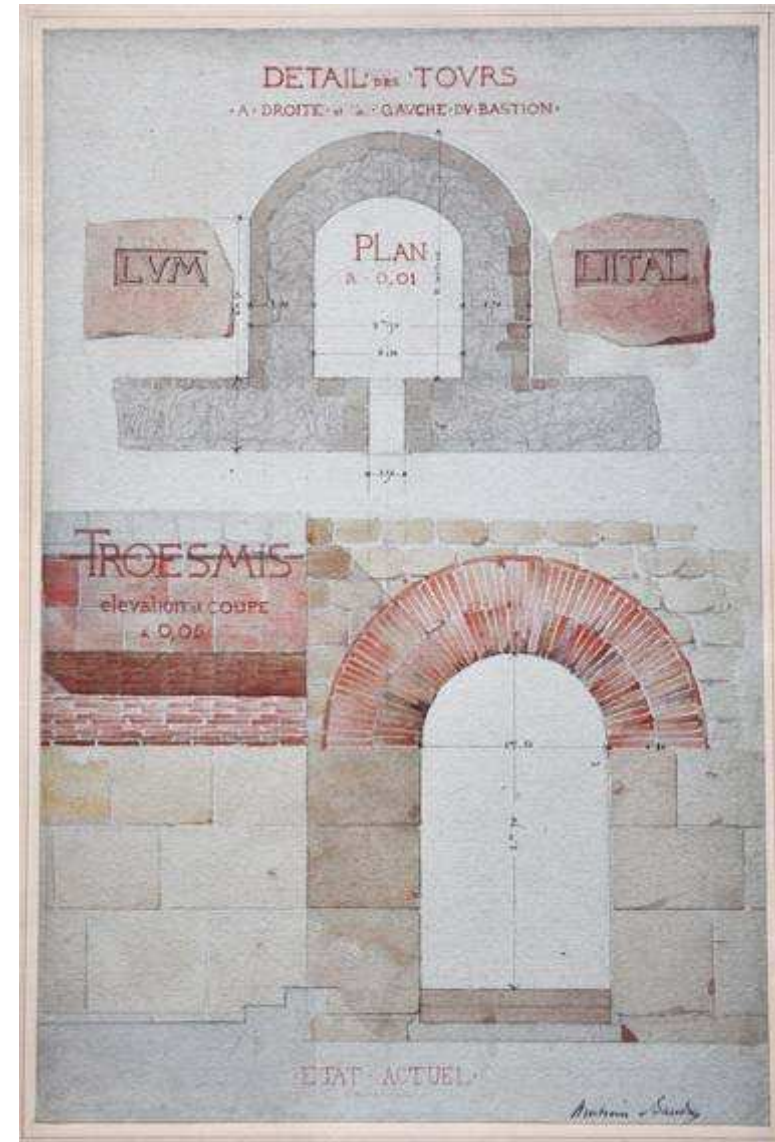
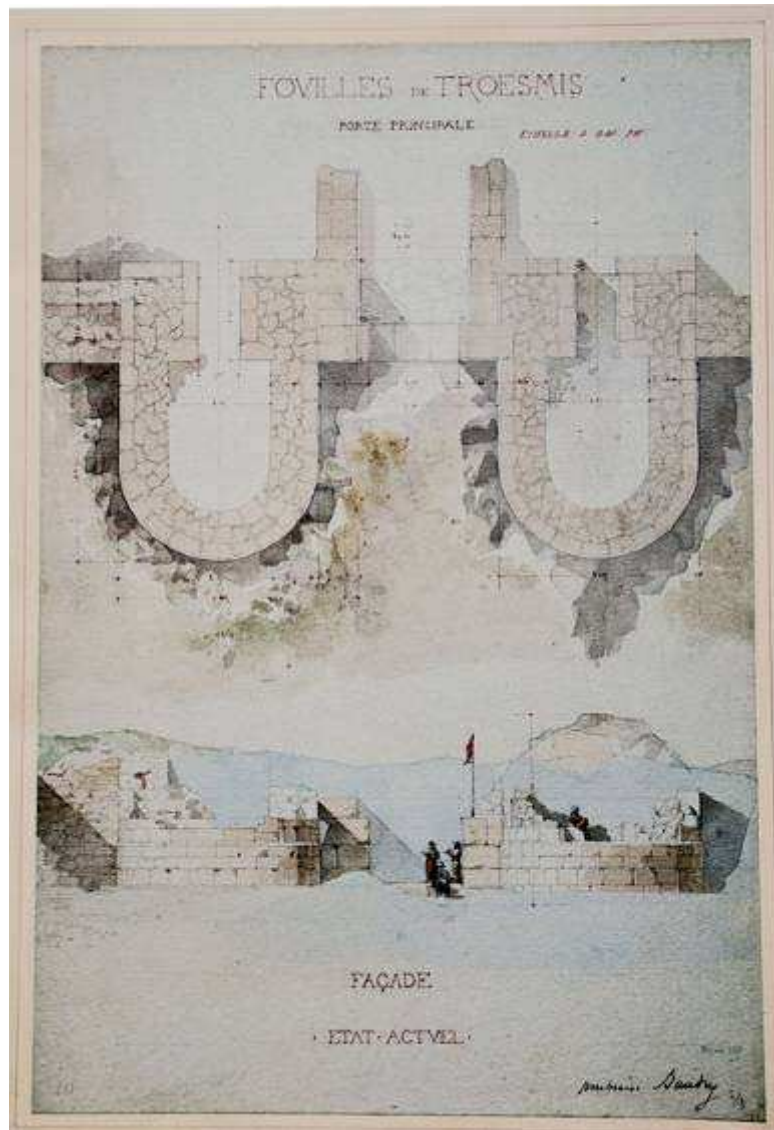


Troesmis – Documentation of Eastern fortification
by the French mission: Ambroise Baudry, July 1865



Eastern Fortification
right – Original aquarelle from 1865;
left – published plan (1882).

Troesmis – Documentation of the Eastern fortification
by the French mission: Ambroise Baudry, July 1865

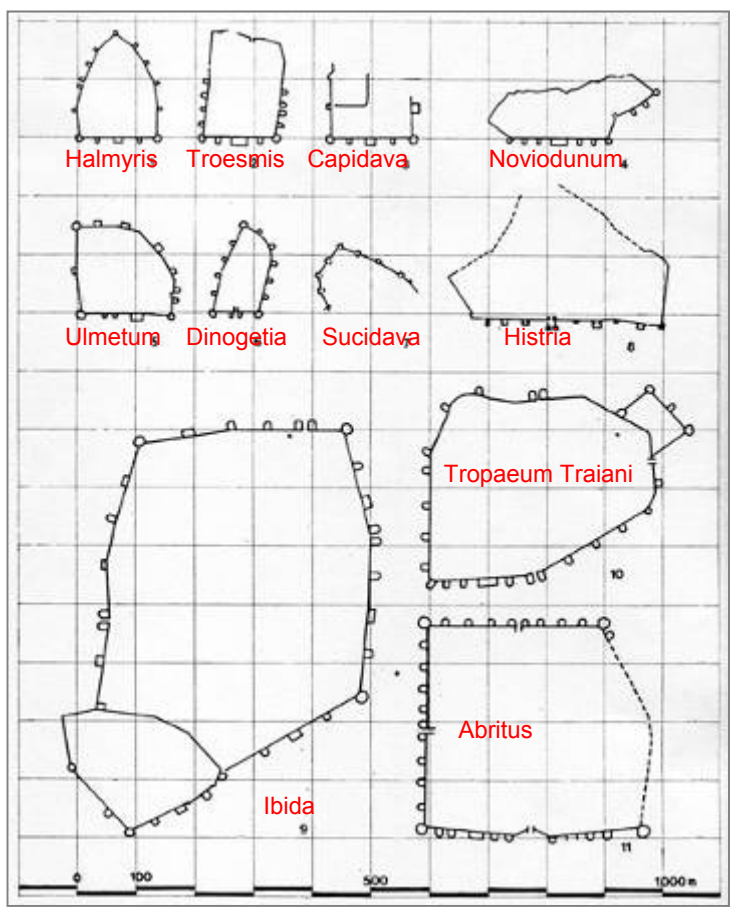
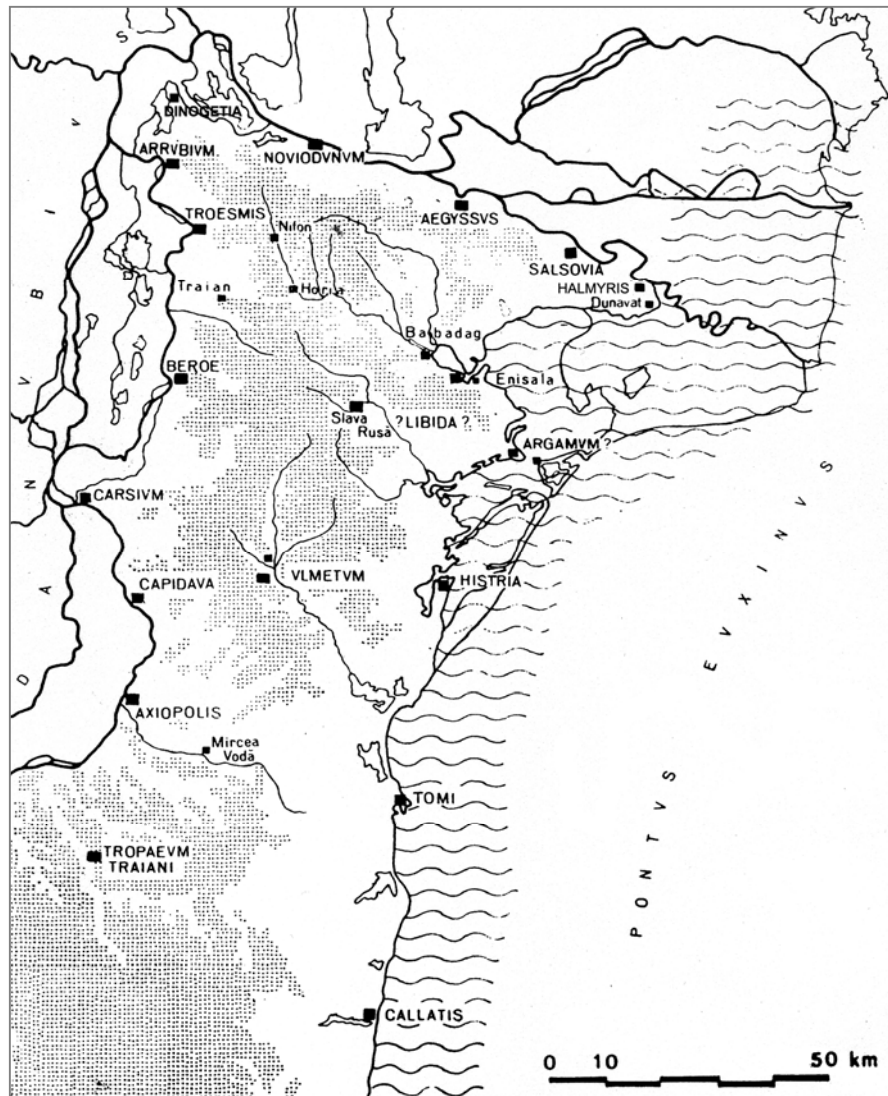




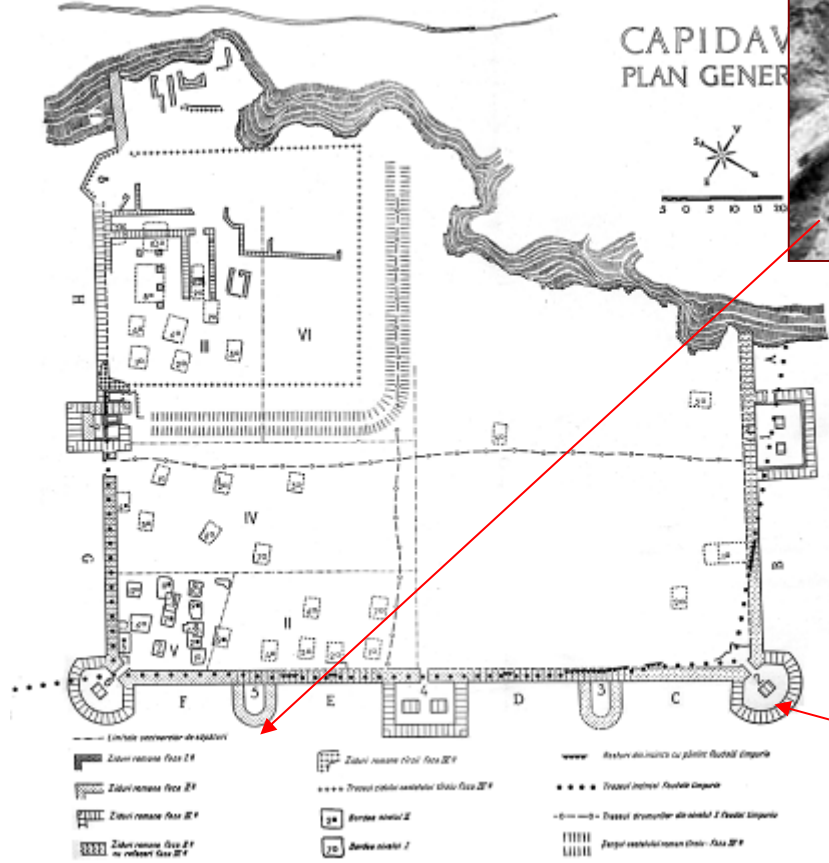
September 2011

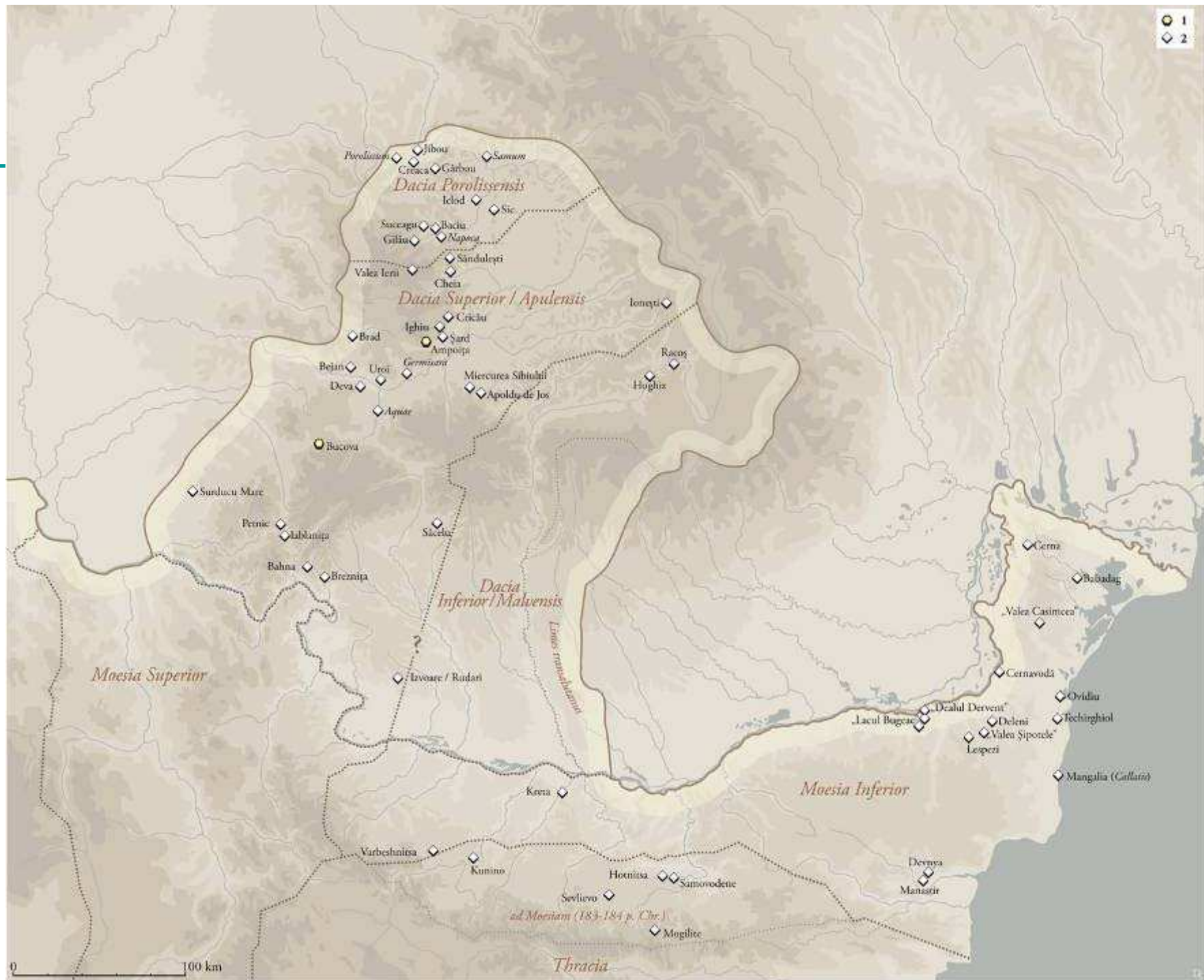


July 1865



Capidava – earthen
of rep...

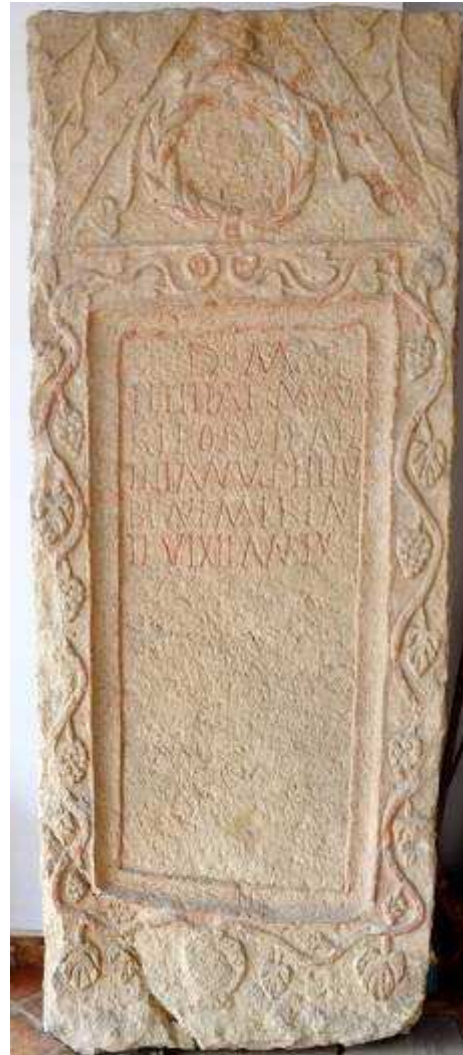




Examples of early large gravestones reused in the late fortifications due to their outstanding quality of stone



Troesmis, ISM V 184



Halmyris, cat. nos. 21 and 25_Arheomedia-db/ID5013 and 5001



Troesmis – further spolia, cut for the purpose



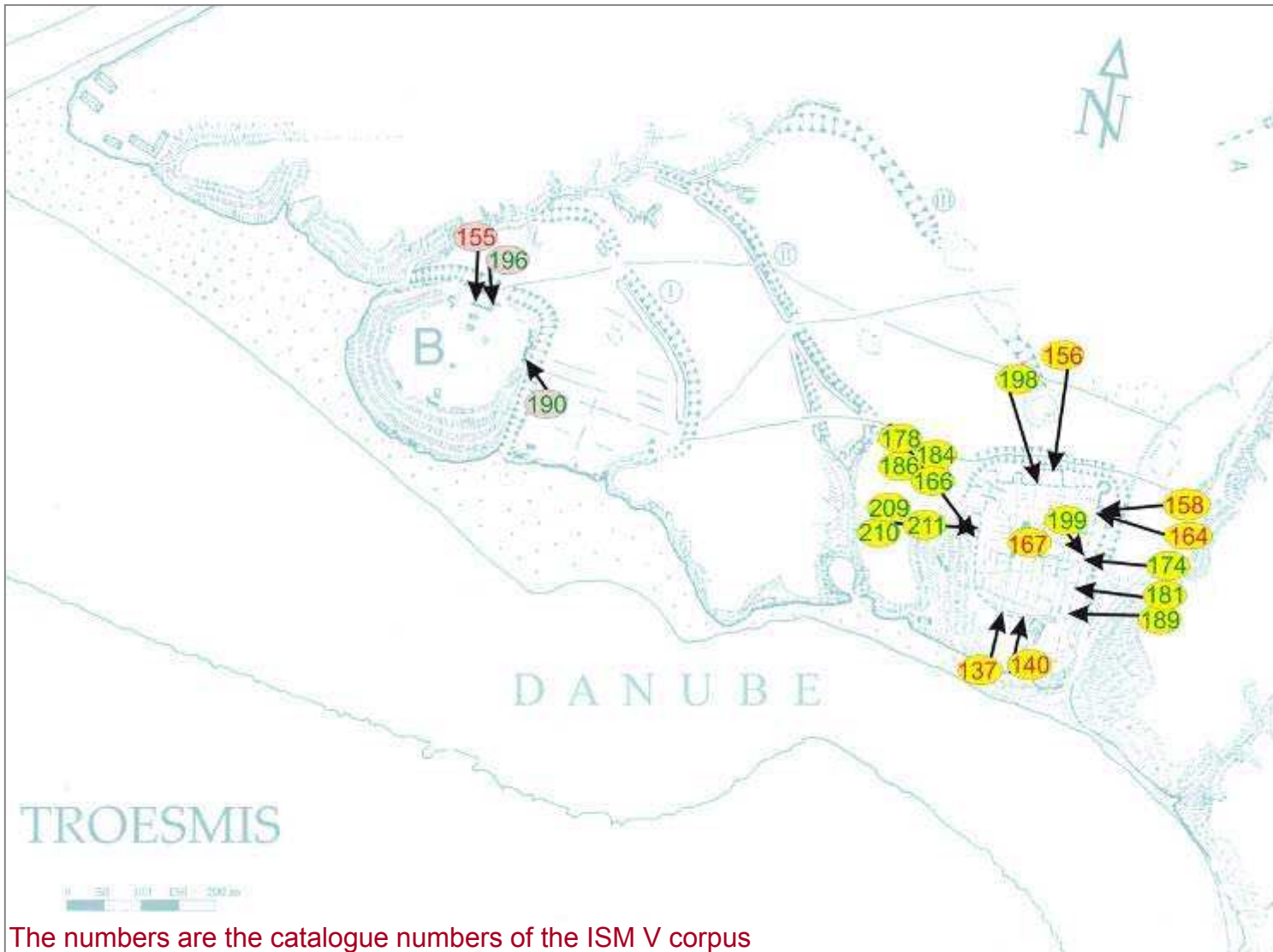
ISM V 201



ISM V 147



Troesmis – reused early inscriptions with known finding area/place



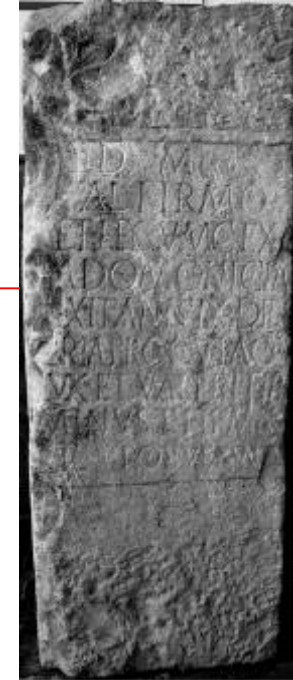
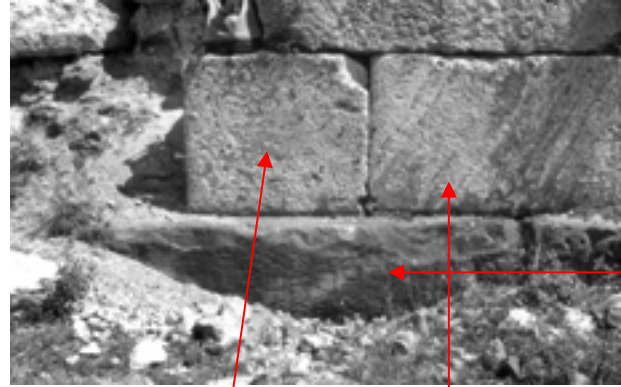
green = funerary
red = votive
& honorary

The numbers are the catalogue numbers of the ISM V corpus

Troesmis – reused monuments with known finding place



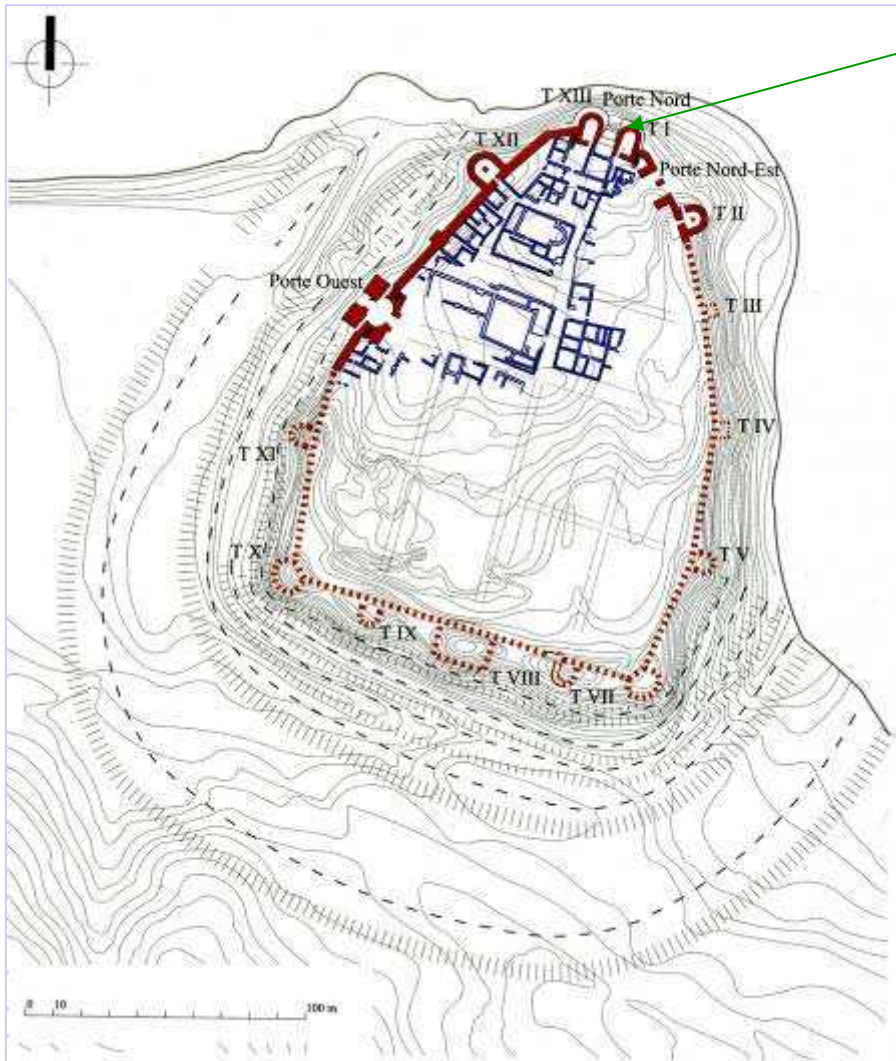
ISM V 158



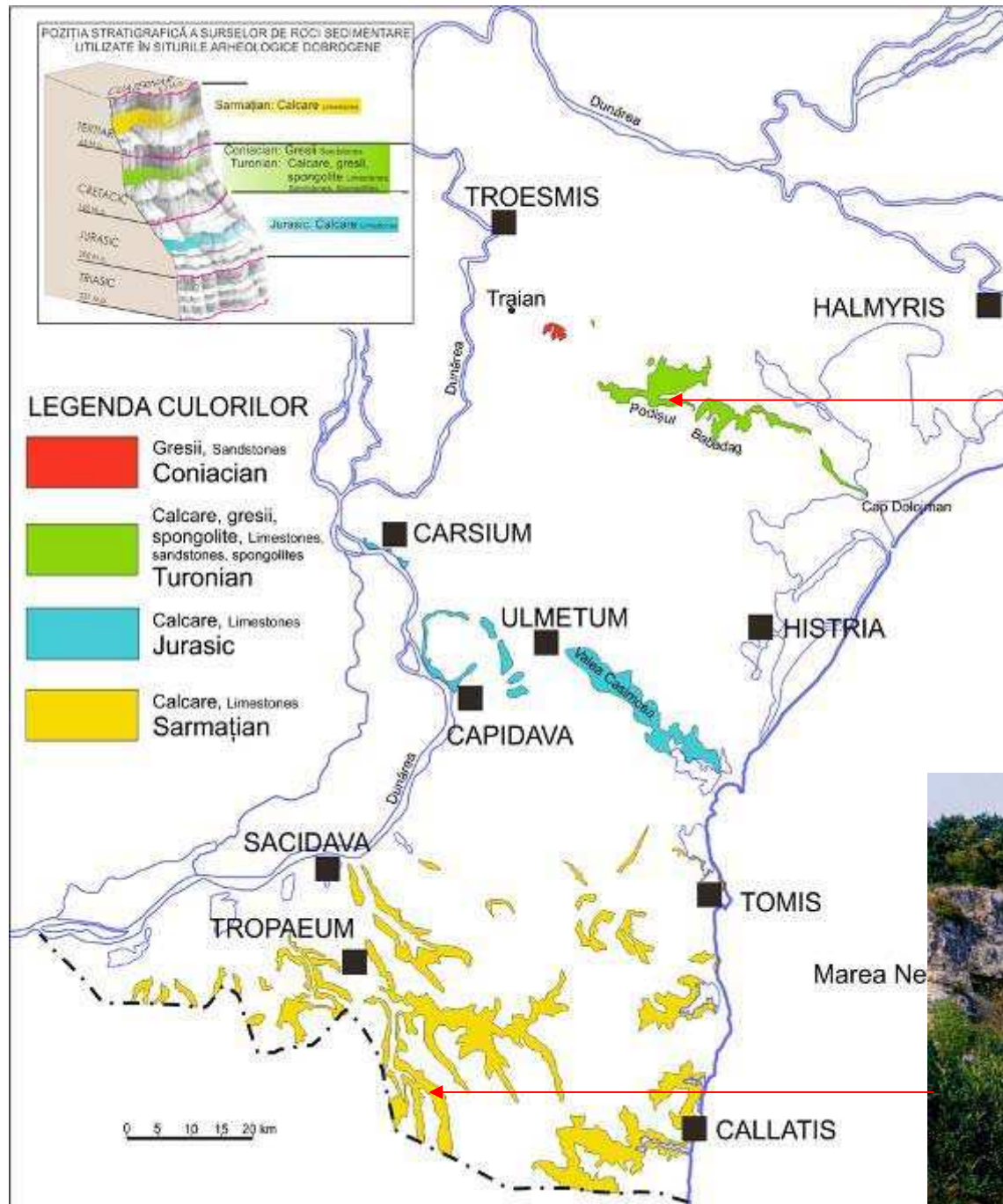
ISM V 196



Halmyris – documented finding contexts of the spolia



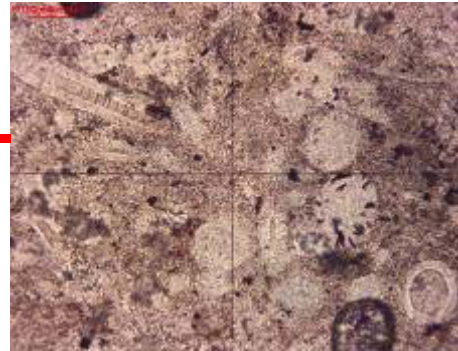
Stone provenance



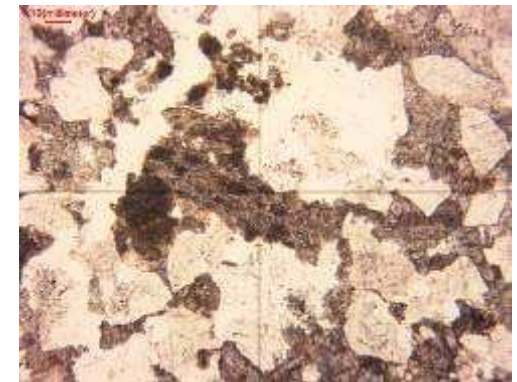
Troesmis – monuments cut in local stones



Troesmis, ISM V 137



Troesmis, ISM V 142



Monuments of Babadag limestone – the difficult choice



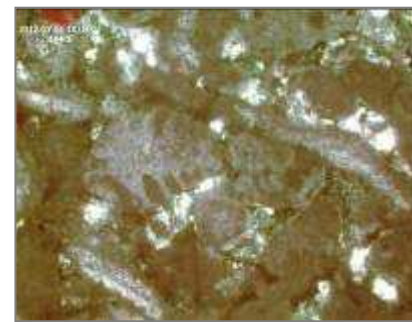
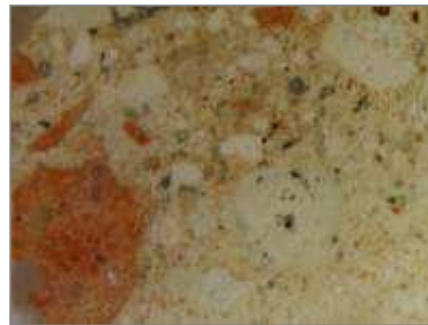
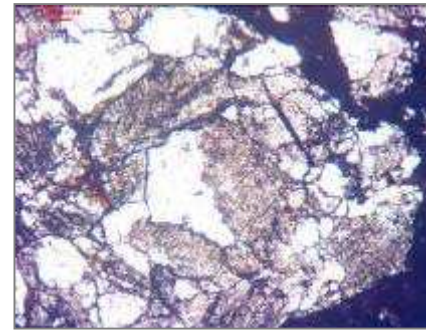
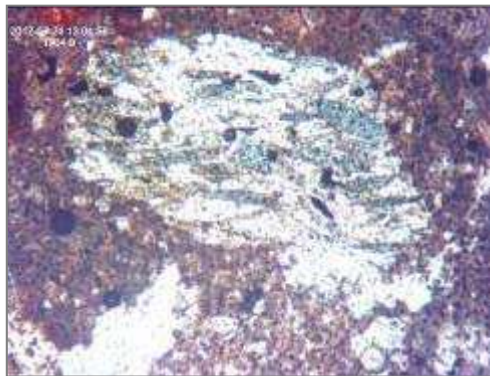
Halmyris, cat. nr. 151_Arheomedia-db/ID5017 – fragment of one of the very high gravestelai



Monuments from Troesmis in the MAN St. Germain-en-Laye

Troesmis – mortar samples from the Eastern fortification





Mortar samples from the Western fortification with stone of provenance in the South Dobrudja (Cretaceous calcarenites and Sarmatian limestones), like the ashlar they bonded: visible fossils (Trocholina – left, and Nubecularii - right)

Thank you for your attention!

