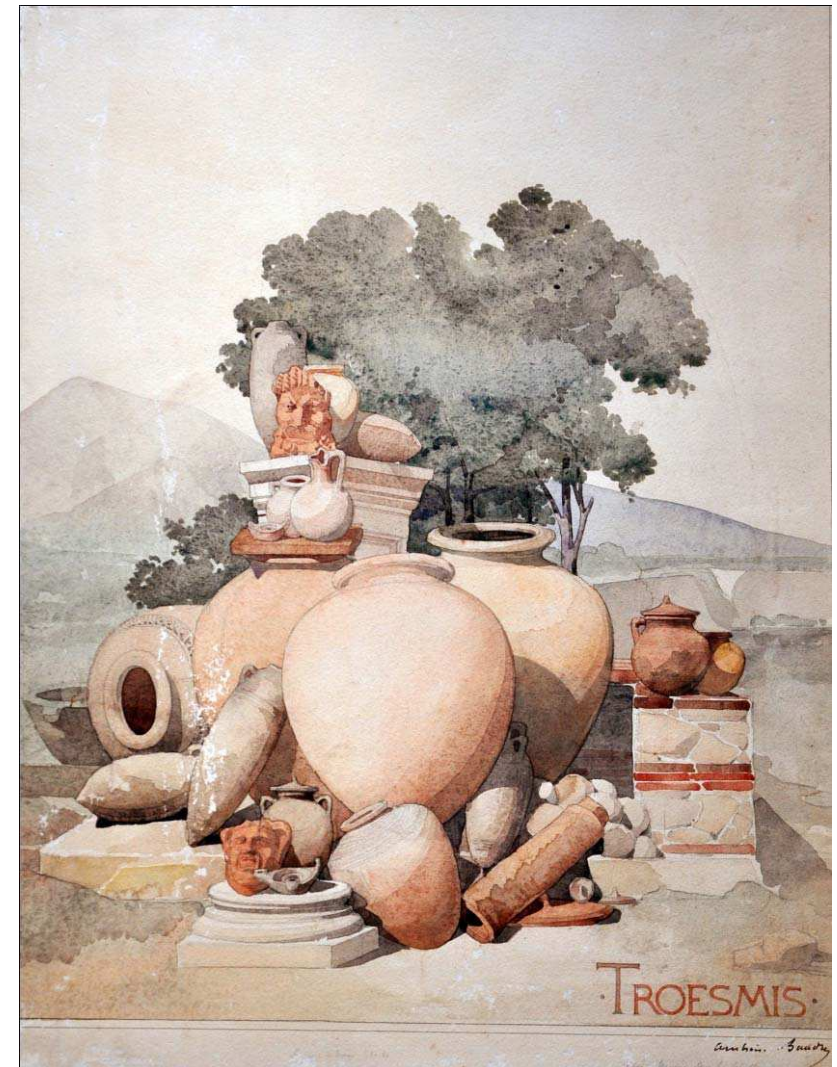
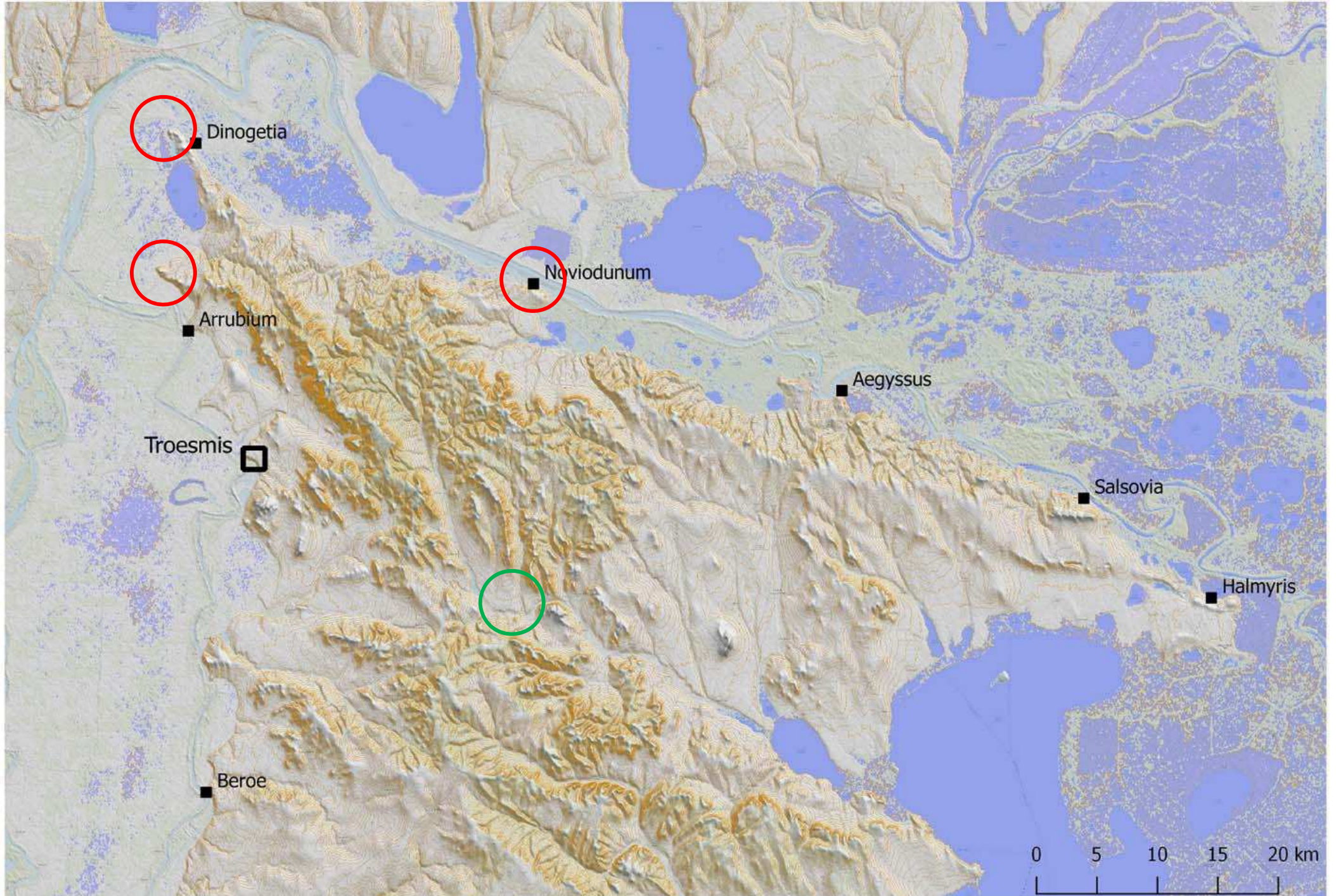


The Troesmis-Project 2011-2015

Research questions and methodology



Northern Dobruja: Topography



The landscape between Turcoaia and the Măcin-Mountains

Western fortification

Eastern fortification

Măcin-Mountains

Turcoaia



Troesmis-Iglița: Eastern fortification (from the North)

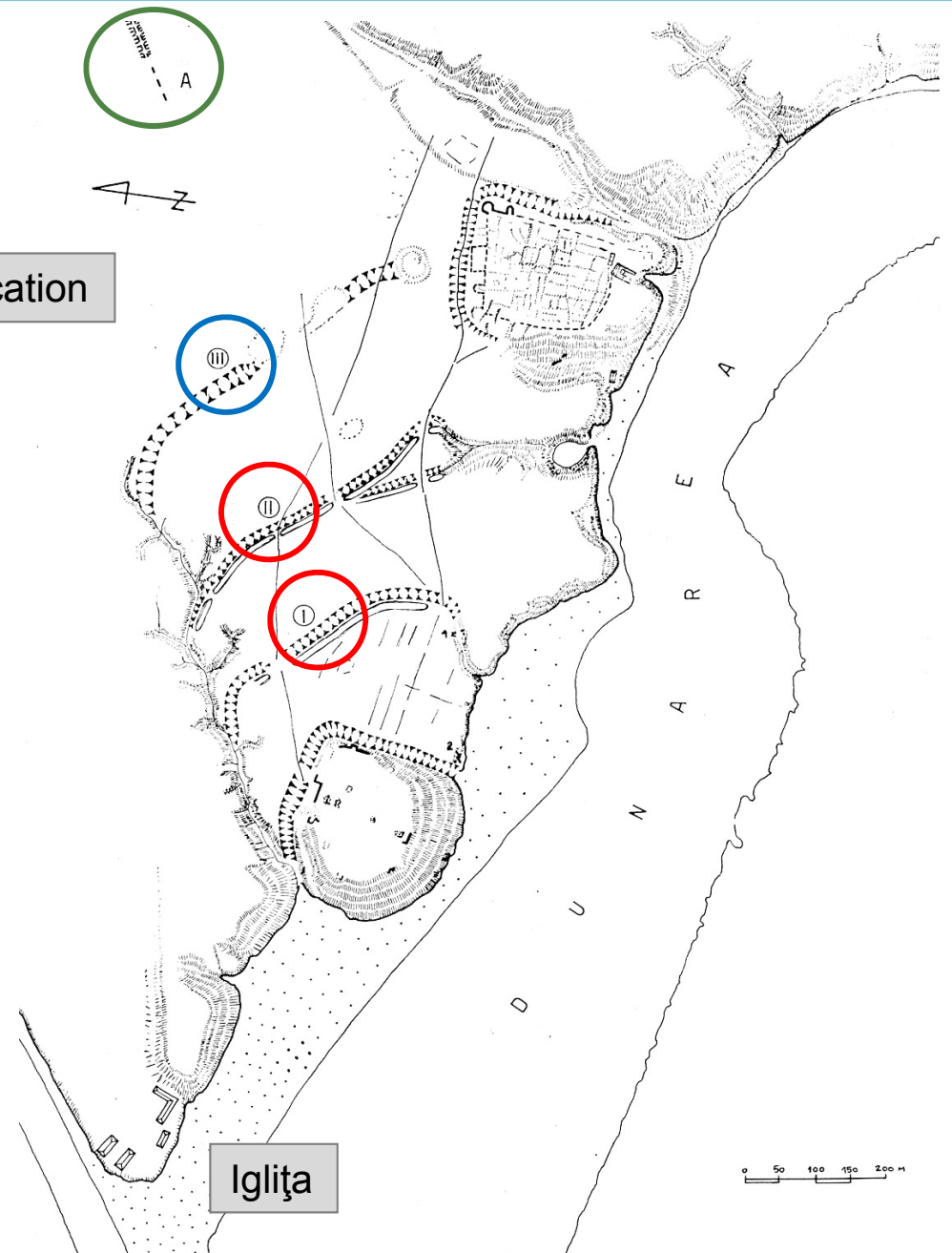


Troesmis-Iglița: Air photo interpretation (Ștefan 1971)



Eastern fortification

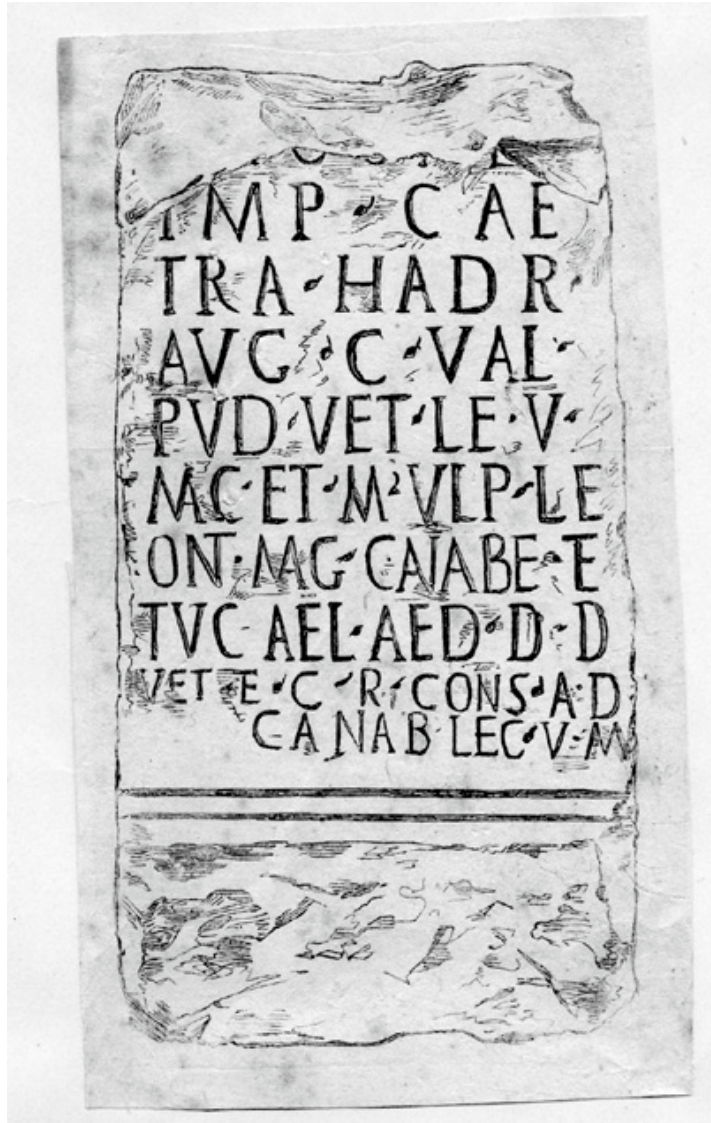
Western fortification



Iglița

0 50 100 150 200 m

Administrative Inscriptions from *Troesmis*



IScM 5, 154:

[I(ovi)? O(ptimo)? M(aximo)?] / [pr]o s[a]l(ute) / Imp(eratoris) Cae(saris) / Tra(iani) Hadr(iani) / Aug(usti) C(aio) Val(erio) / Pud(ente) vet(erano) le(gionis) V / Mac(edonicae) et M(arco) Ulp(io) Le(ontio) **mag(istris) canabe(nsiu)m** et / Tuc(cio) Ael(iano) aed(ile) d(onum) d(ant) / **vet(erani) et c(ives) R(omani) cons(istentes) ad / canab(as) leg(ionis) V Ma(cedonicae)**

IScM 5, 158:

[I(ovi) O(ptimo) M(aximo) sacrum pro] / salute Imp(eratoris) T(iti) Aeli Ha(driani) Antonini Au(g(usti) Pii et Aureli Veri Cae(saris) [s]ub Iul(io) Severo leg(ato) Au(g(usti) pr(o) pr(aetore) dedicante Ae(l)io Optato I(e)g(ato) Aug(usti) L(ucius) Licin(ius) / domo Ni(copolis?) Cleme(n)s / **vet(eranus) leg(ionis) V Ma(cedonicae) q(uin)q(uennalis) c(anab(ensiu)m) / et dec(urio) Troesm(ensiu)m** c(u)m Licinia / Veneria coniuge Lucia Li(cinia) fil(ia) et Iul(io) [C]lemente et Oc(tavio) Clementian(o) et Licinia Cle(mentiana) et O(c)t[av]io [C]le(mente) et Lic(inio) Cle(mente) et / Oct(avio) Lic(inio) nep(otibus) d(e) s(uo) p(osuit) et ded(it) cur(iae) CCL / ob honor(em) q(uin)q(uennalitat)is) ex quor(um) incre[m]en[tis] omnib(us) [decurionibus sportulae dividerentur?]

IScM 5, 157:

I(ovi) O(ptimo) M(aximo) [---] / sac(rum) pro sa(lute) Imp(eratoris) Caes(aris) T(iti) Ael(i) / Had(riani) Anton(ini) [Aug(usti) Pii et M(arci) Aur(eli)] / Caes(aris) **c(ives) R(omani) Tr(oesmi) consist(entes)** mag(isterio) -? Ge[mini] Aquil[ini] et - --/man(---) qui et Sic[---] / [per]missu [---] / [-----]

IScM 5, 143:

Tib(erio) Veturio / Tib(eri) fil(io) Aemilia / Mauretano F(un)dis praefecto / castrorum / leg(ionis) V Mac(edonicae) / **ordo / T[r]o[es]mensium**

Lex Troesmensium (Eck 2014)

Plaque A: (min.) 67 x 54 cm, ca. 21 kg

Plaque B: (min.) 59 x 50 cm, ca. 18 kg

Plaque A:

- *k(aput) XI*
- election of municipal envoys

Plaque B:

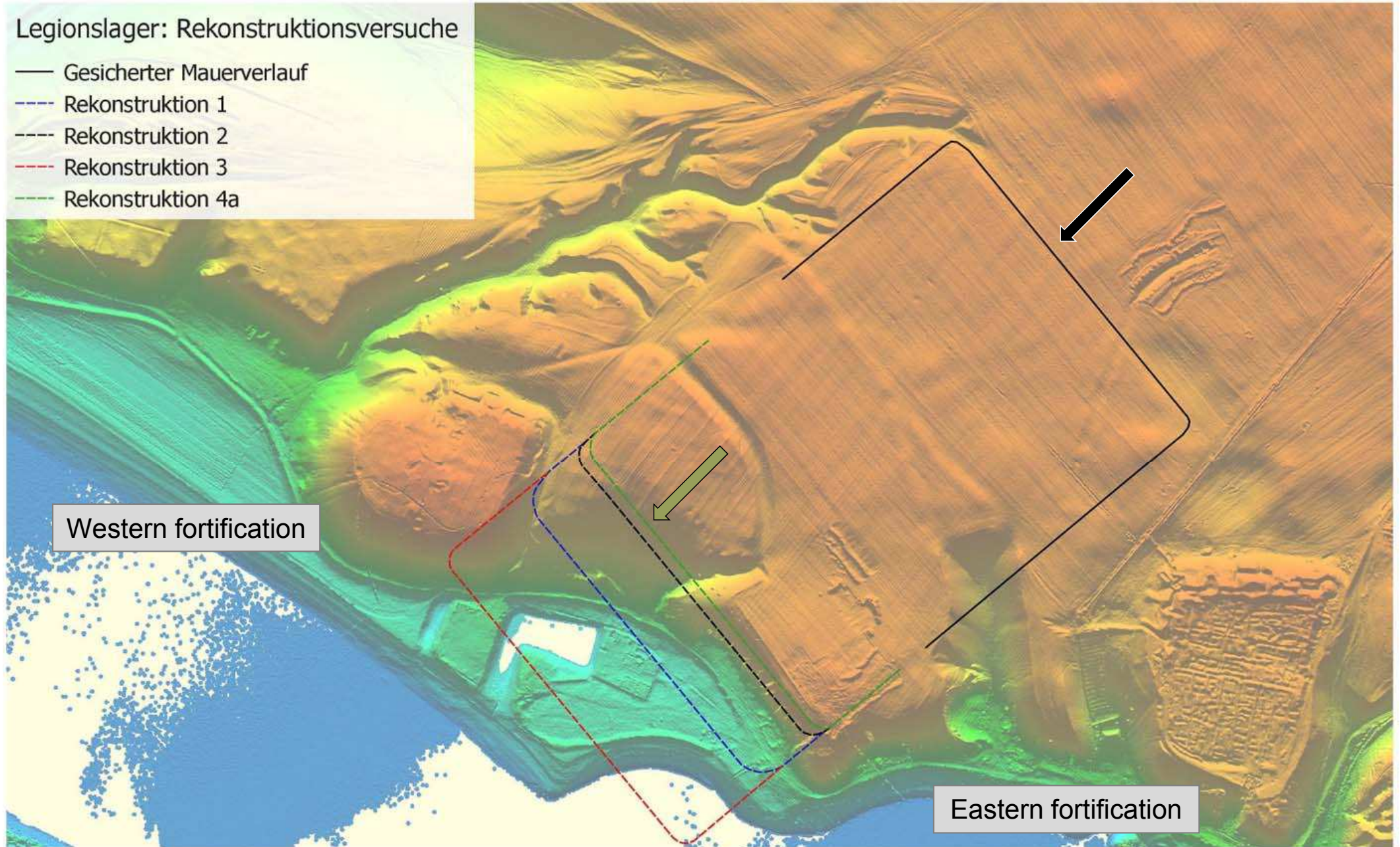
- *k(aput) XXVII – k(aput) XXVIII*
- admission requirements at elections
- *municipium Marcum Aurelium Antoninum et Lucium Aurelium Commodum Augustum Troesmensium*
- **177–180 AD**
- institutions cited on both plaques: *decuriones conscripti, quinquennales, Ilviri, aediles, quaestores, scaerdots, people's assembly*



Legionary fortress: reconstruction possibilities

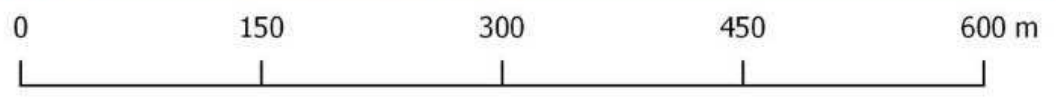
Legionslager: Rekonstruktionsversuche

- Gesicherter Mauerverlauf
- - - Rekonstruktion 1
- - - Rekonstruktion 2
- - - Rekonstruktion 3
- - - Rekonstruktion 4a

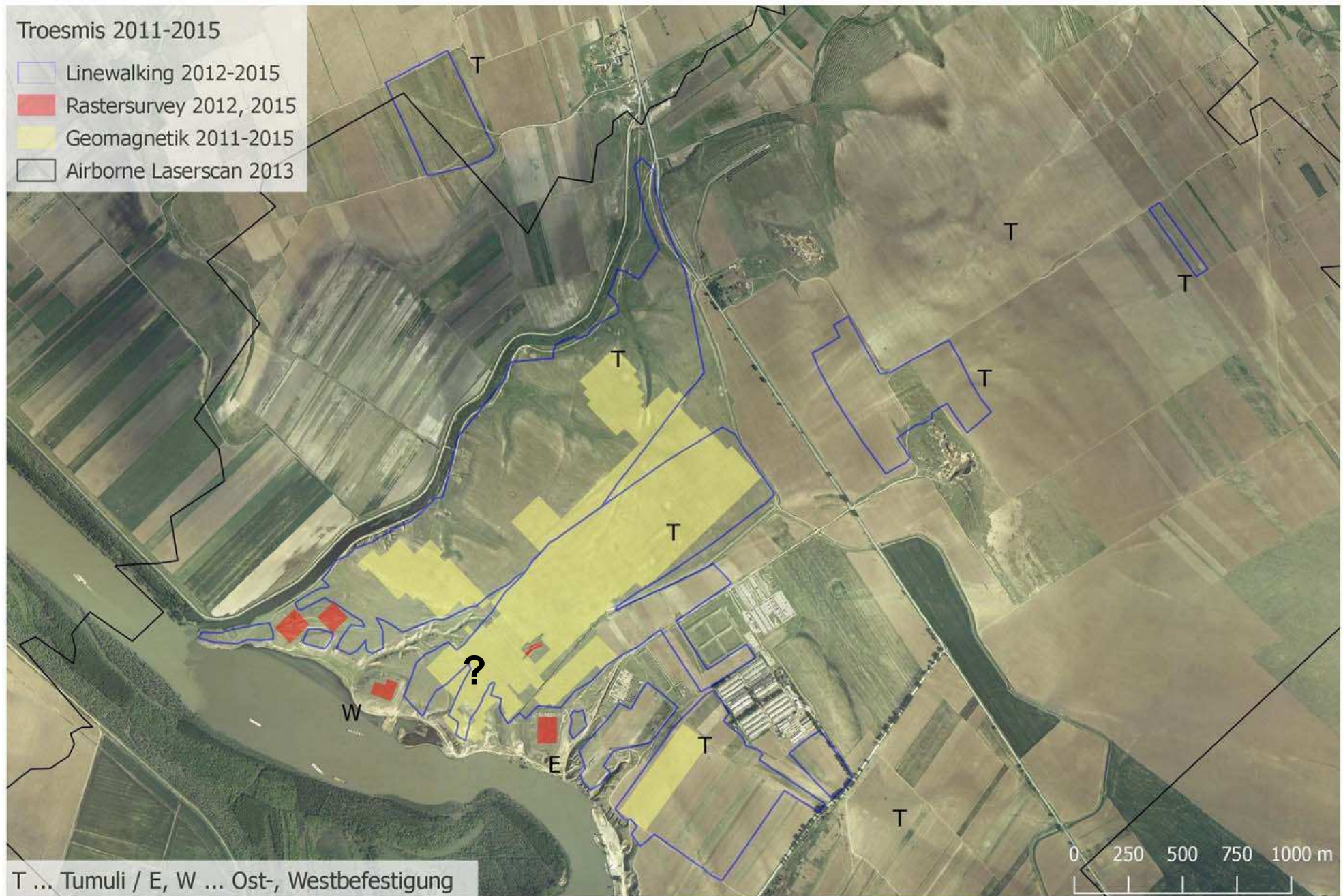


Western fortification

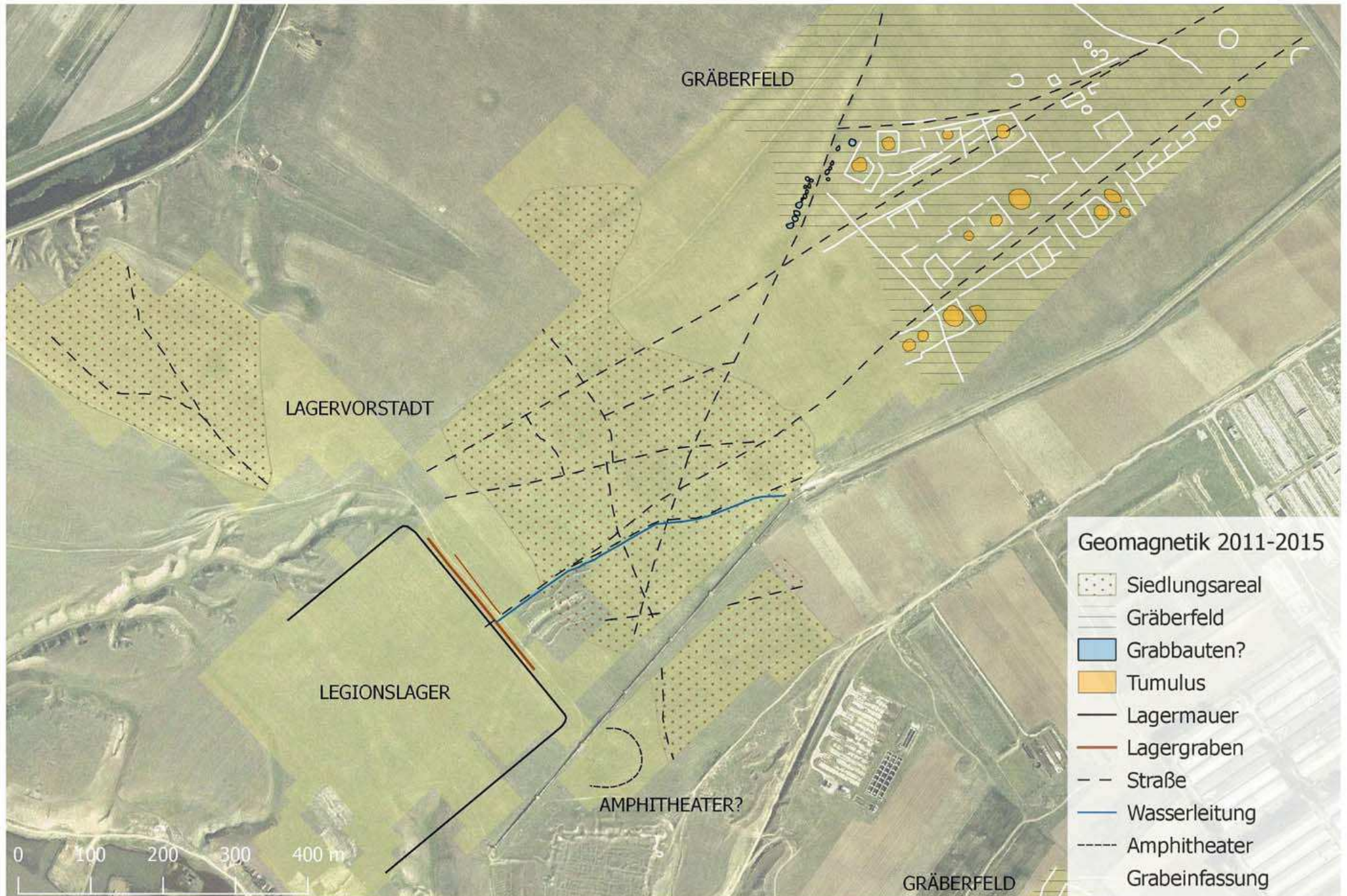
Eastern fortification



Troesmis 2011–2015



Simplified map of the geomagnetic survey

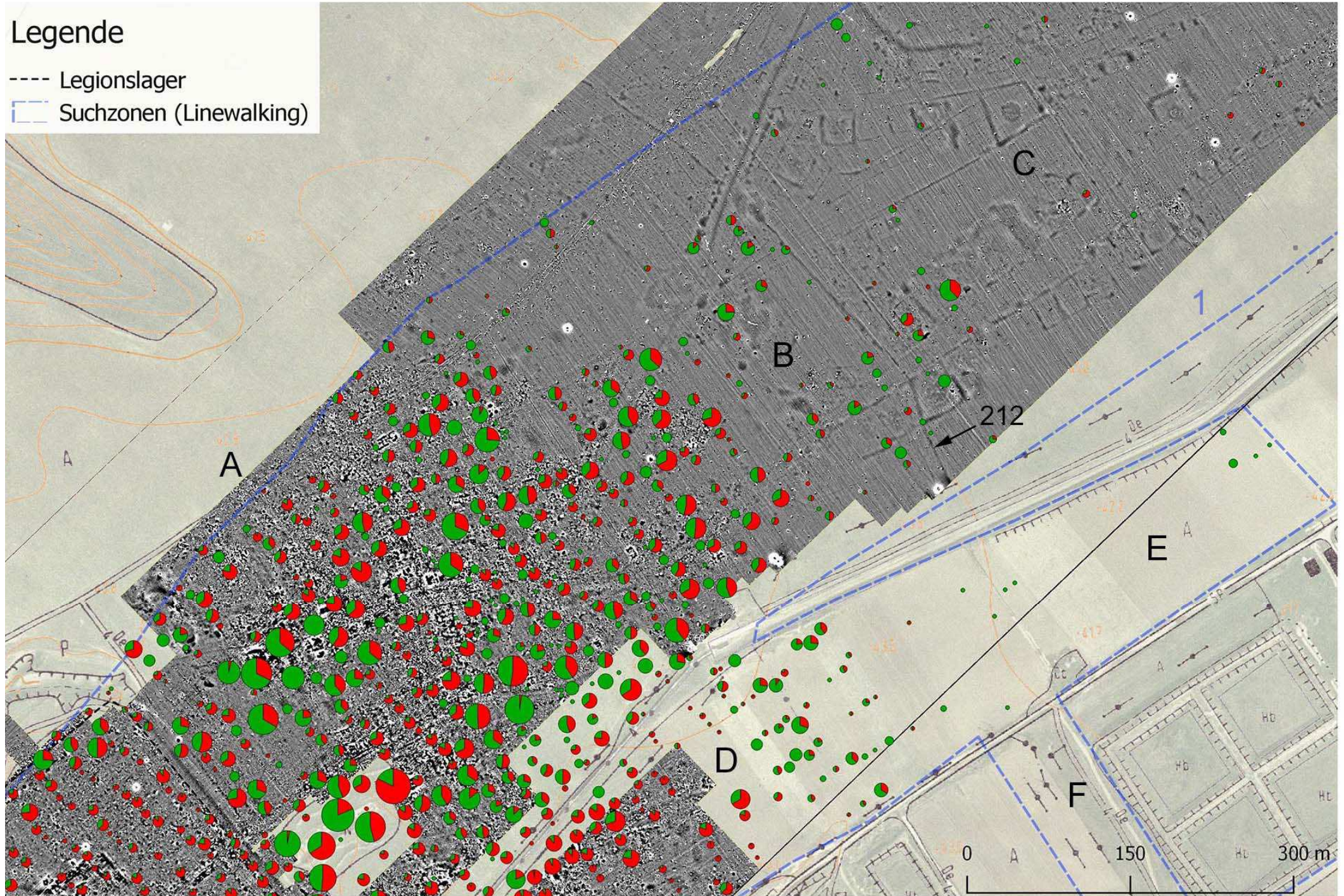


Comparing different prospection methods: geomagnetic and field survey

Legende

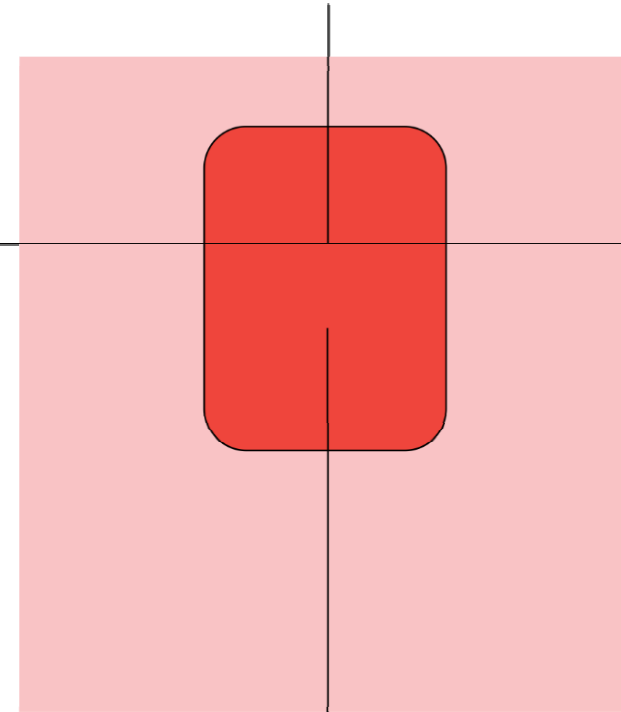
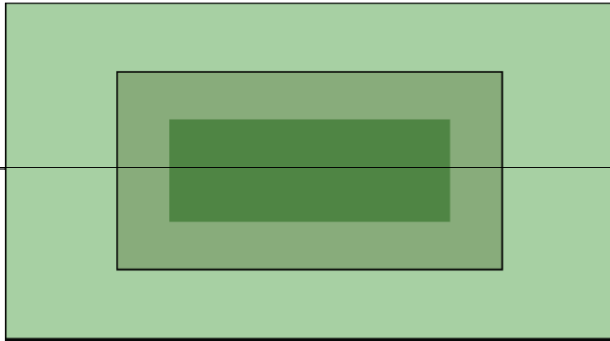
---- Legionslager

▭ Suchzonen (Linewalking)



Settlement duality at legionary bases in Britain and the Rhine and Danube provinces

Vicus > Municipium > Colonia

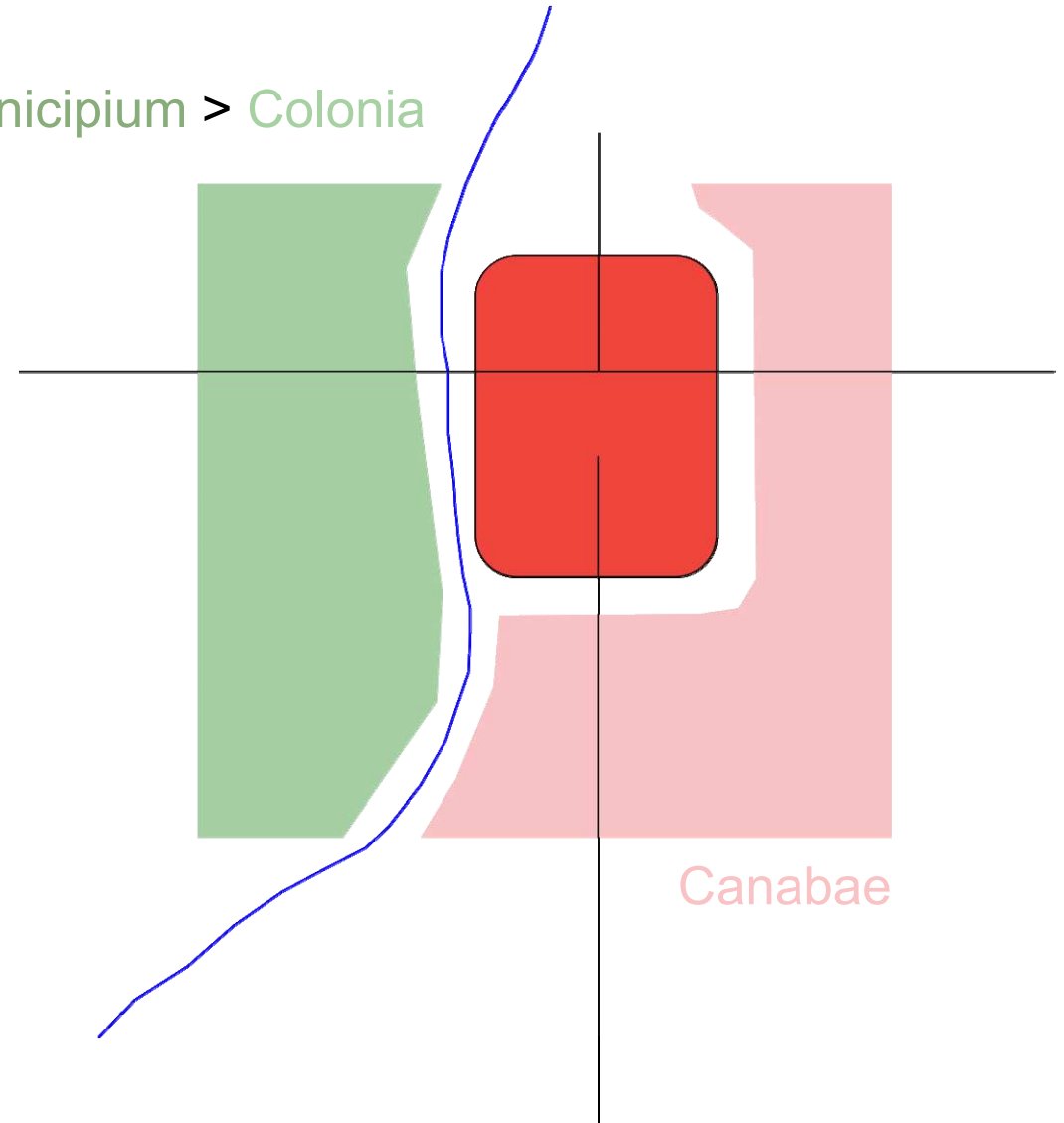


Canabae

<u>Eburacum</u>	<u>Carnuntum</u>
<u>Deva</u>	<u>Brigetio</u>
<u>Isca</u>	<u>Aquincum</u>
<u>Noviomagus</u>	<u>Burnum</u>
<u>Vetera I</u>	<u>Tilurium</u>
<u>Novaesium</u>	<u>Singidunum</u>
<u>Bonna</u>	<u>Viminacium</u>
<u>Mogontiacum</u>	<u>Apulum</u>
<u>Argentorate</u>	<u>Potaissa</u>
<u>Vindonissa</u>	<u>Ratiaria</u>
<u>Castra Regina</u>	<u>Oescus</u>
<u>Lauriacum</u>	<u>Novae</u>
<u>Poetovio</u>	<u>Durostorum</u>
<u>Vindobona</u>	<u>Troesmis</u>

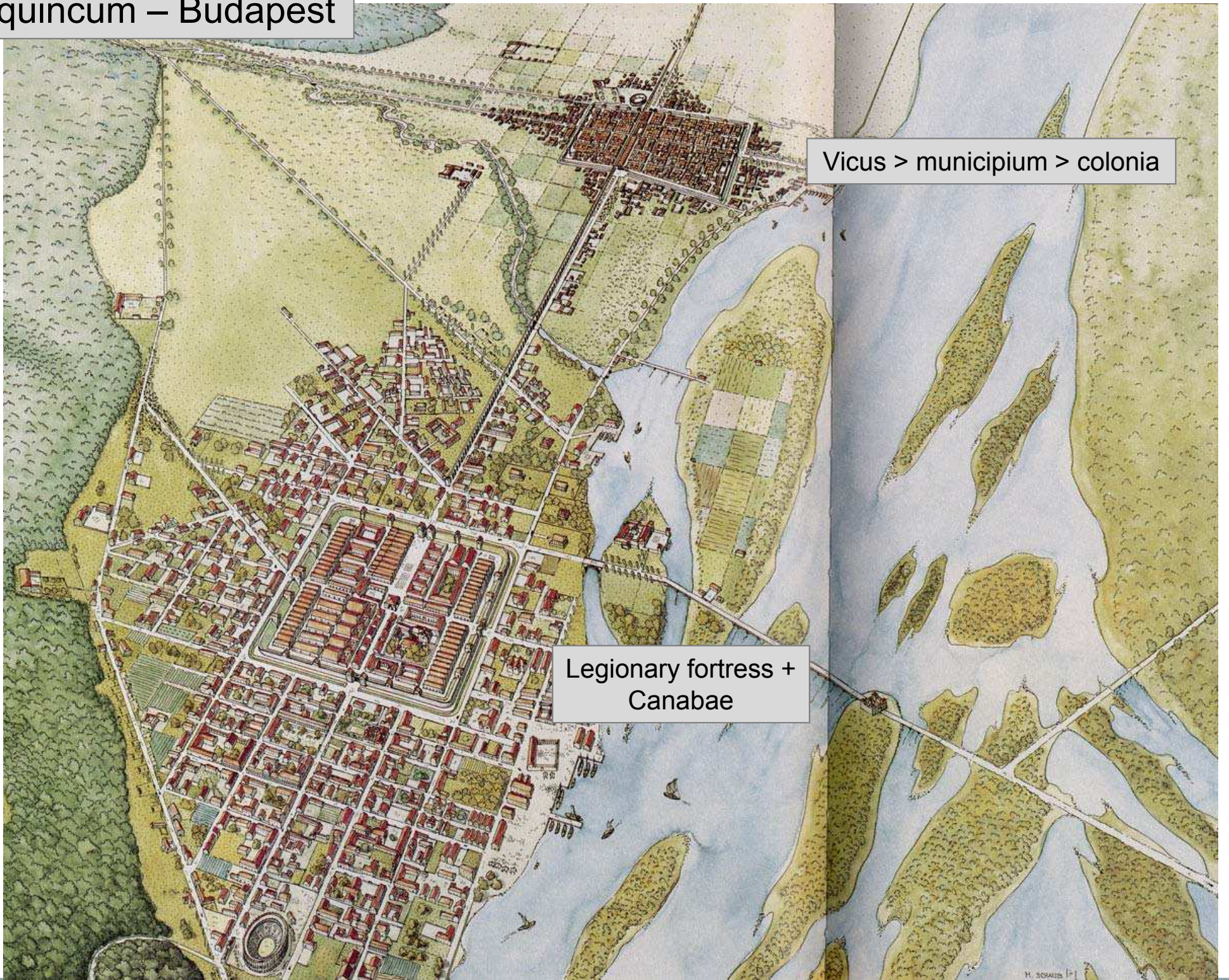
Partitioning of the civil settlement outside the fortress into different administrative units?

Vicus > Municipium > Colonia



Eburacum	Carnuntum
Deva	Brigetio
Isca	Aquincum
Noviomagus	Burnum
Vetera I	Tilurium
Novaesium	Singidunum
Bonna	Viminacium
Mogontiacum	Apulum
Argentorate	Potaissa
Vindonissa	Ratiaria
Castra Regina	Oescus
Lauriacum	Novae
Poetovio	Durostorum
Vindobona	Troesmis

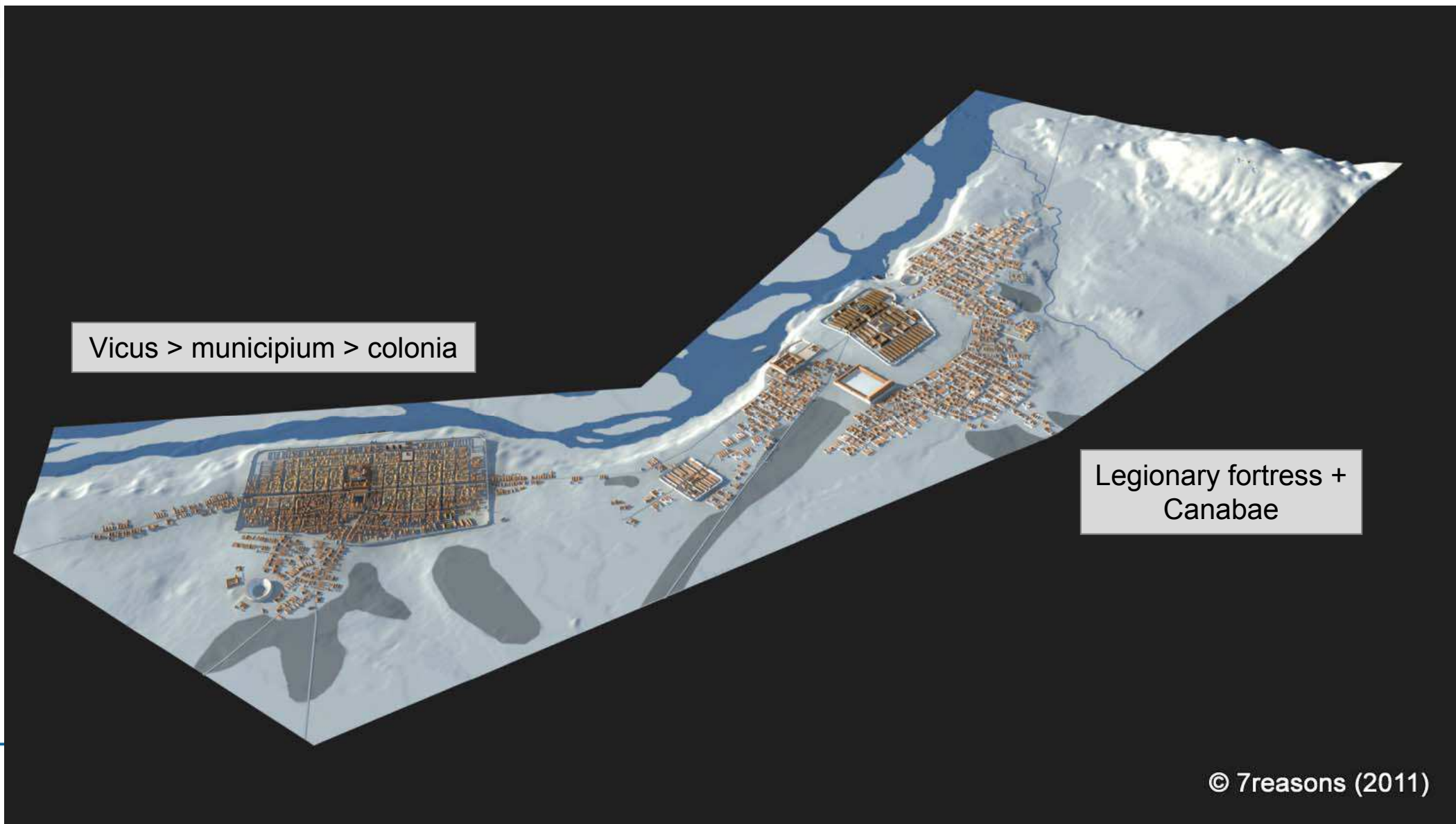
Aquincum – Budapest



Vicus > municipium > colonia

Legionary fortress +
Canabae

Carnuntum: Virtual model of the civilian town, the legionary fortress and the canabae



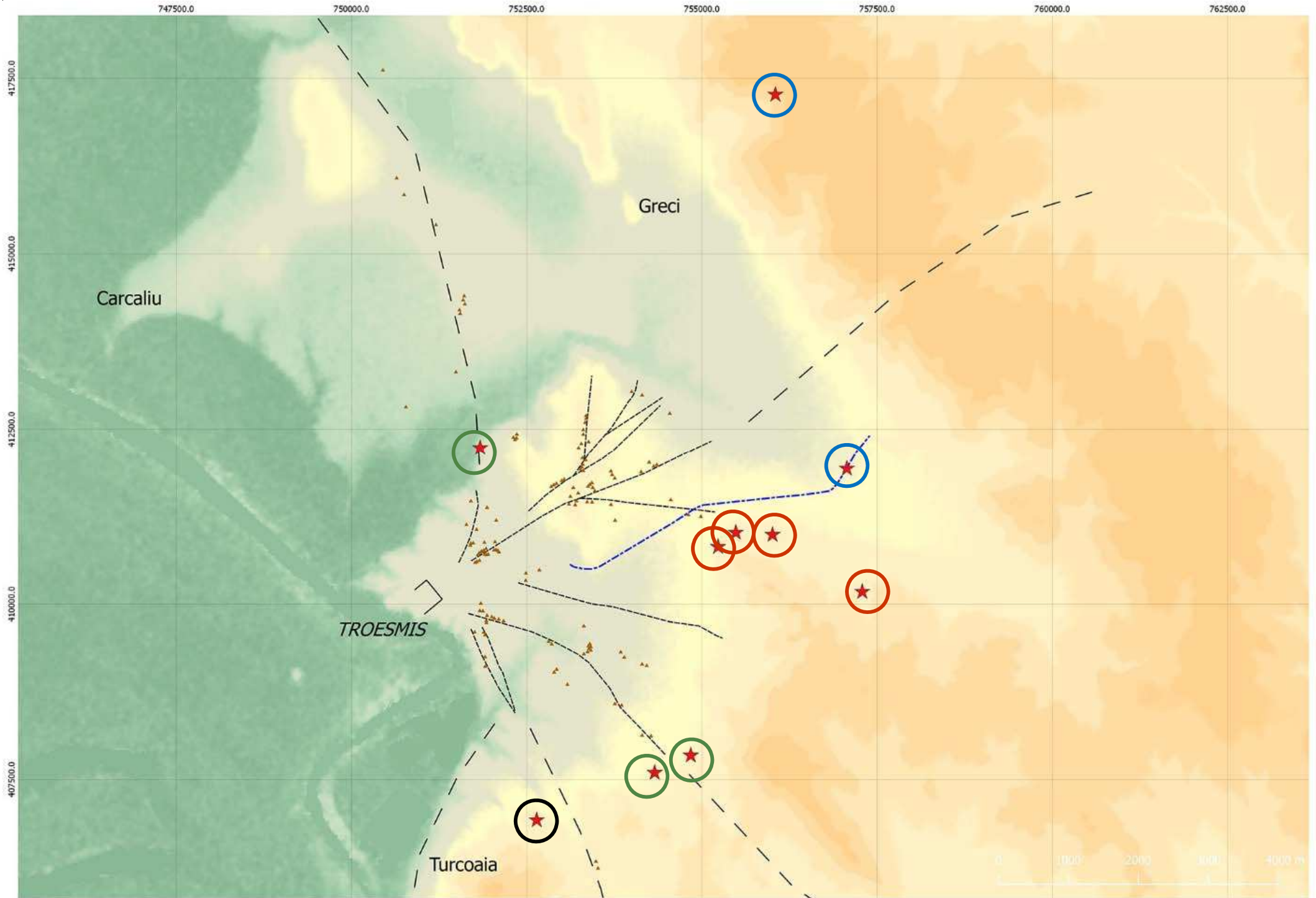
Vicus > municipium > colonia

Legionary fortress +
Canabae

Troesmis – interpretation of remote sensing data: Air photos, satellite images, LiDAR



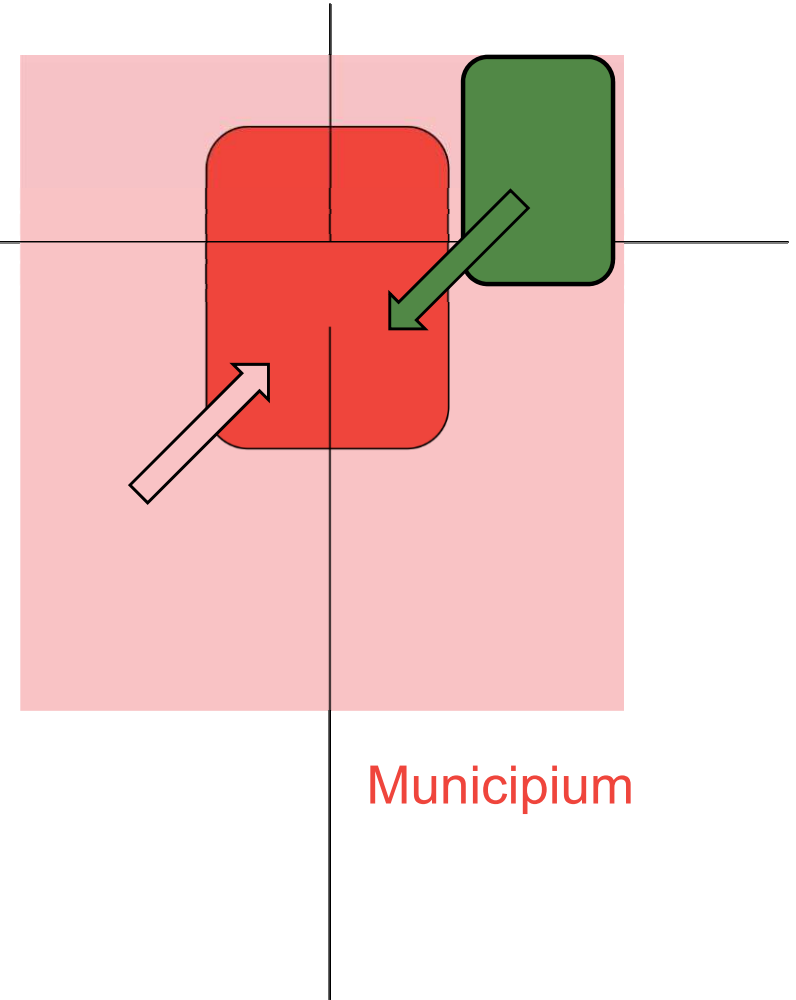
The hinterland of Troesmis: street network, tumuli and Roman sites

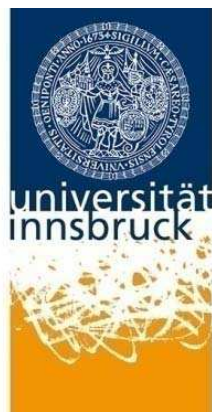


Troesmis: Transformation from a legionary base to a civilian settlement



Camulodunum	Poetovio
Glevum	Vindobona
Lindum	Carnuntum
Eburacum	Brigetio
Deva	Aquincum
Isca	Burnum
Noviomagus	Tilurium
Vetera I	Singidunum
Novaesium	Viminacium
Bonna	Apulum
Mogontiacum	Potaissa
Argentorate	Ratiaria
Mirebeau	Oescus
Vindonissa	Novae
Castra Regina	Durostorum
Lauriacum	Troesmis





Research staff:

- C. G. Alexandrescu (Inst. de Arheologie 'Vasile Pârvan')
- W. Eck (Univ. Köln)
- G. Grabherr (Univ. Innsbruck)
- C. Gugl (IKAnt, ÖAW)
- B. Kainrath (IKAnt, ÖAW)
- A. Panaite (Institutul de Arheologie 'Vasile Pârvan')
- R. Sauer (Univ. für angewandte Kunst Wien)
- A. Waldner (IKAnt, ÖAW / ÖAI)
- Airborne Technologies (Wiener Neustadt)

Troesmis 2015

